

> **Tytherington Liaison Group meeting: October 20, 2022**



> Meeting Agenda

1. Introduction – Mike Brown, Aggregates Area Operations Manager, South West, Hanson UK
 - Welcome and introduction
 - Hanson's on-going approach re liaison meetings
 - Review of Terms of Reference
2. Liaison Group Membership update.
3. Tytherington operational update – Jenna Roberts, Unit Manager, Tytherington Quarry
 - Logistics (including road and rail).
 - Updates as appropriate re blasting.
 - Update re transport, including rail.
 - New website and contact information
4. Feedback.
5. Land and mineral planning update.
6. Environmental, landscape and biodiversity update.
7. Community Giving update.
8. AOBs
9. Date of future meetings

➤ Welcome to new Tytherington community liaison group

Aims:

- To provide an information exchange between Hanson and local communities.
- To facilitate communication, share information and engage in balanced discussions.
- To provide local residents and interested groups with an opportunity to discuss matters arising from site operations and future proposals.
- Seek an independent Chair from its membership by the autumn.
- Hanson to provide secretariat support.
- Terms of reference circulated and to be agreed by the membership of the group.



➤ Tytherington quarry community liaison group

Membership

Membership of the group initially to comprise of representation from:

- Tytherington Parish Council
- South Gloucestershire Council (SGC) Ward Cllr
- Alveston Parish Council
- Thornbury Town Council
- Iron Acton Parish Council
- SGC Environmental Health department
- SGC PROW officer
- SGC
- Local resident representing near neighbours

One representative per organisation

- Hanson site management and company specialists as appropriate subject to agenda.



➤ Tytherington quarry update

Operational overview

- Reopened in 2018 following mothballing in 2012.
- One of a few rail connected Hanson sites.
- Permitted Operating hours:
 - Crushing: 06.00 - 21.00 – currently operating until 17.00
 - Asphalt plant 24/7, currently operating window mainly
- Production volumes:
 - 2020 – 1.38 mt
 - 2021 – 1.8mt
 - 2022 – 1.45mt YTD plan for 1.8mt
- Contract crushing operation with KJ Services.
- Currently employ x10 aggregate staff, 6, asphalt staff and @30 contractors.
- Graduate – part of LEADS and Graduate Futures Leaders programme: www.hanson-careers.co.uk



➤ Tytherington quarry update

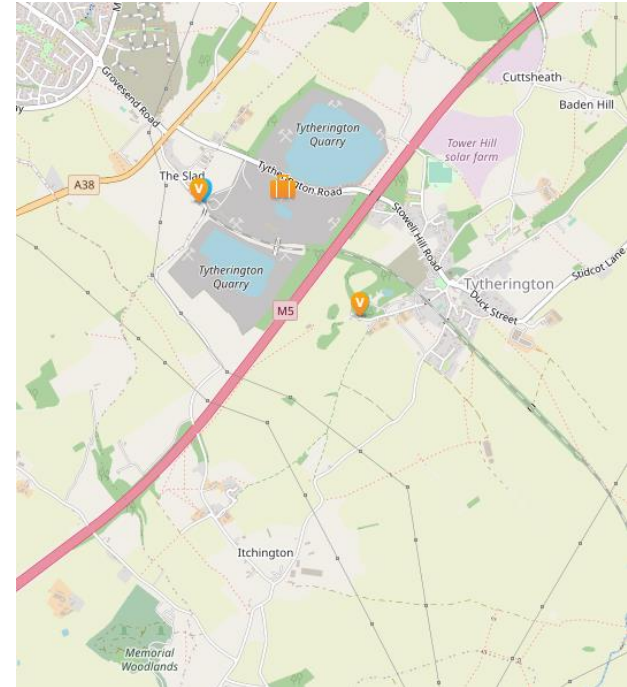
Operational overview (cont.)



➤ Tytherington quarry update

Quarry blasting – vibration monitoring

- 2 fixed monitoring stations installed in August 2022:
 - The Slad
 - West Street
- Mobile remote locations
 - The Slad
 - West Street
 - Itchington – Lime Kiln Court
 - Pylons on Itchington Road
- Two sets of regression lines completed by the blasting contractors to allow us to predict the vibration from each shot at each monitoring location.
- Blasting permissions: 9mm/s 95% of the time, max Peak Particle Velocity (PPV) 12mm/s.



➤ Tytherington quarry update

Quarry blasting – vibration monitoring (cont.)

- The way in which a quarry blast is experienced can be shaped by a number of factors including, geology; vibration; air pressure, frequency and even the weather.
- The UK has stringent regulatory controls in place and all blasts at Tytherington quarry are fully in line with these.
- Operating within these standards, as we do at all our quarries, means that there is no risk of structural damage to nearby homes or buildings.
- Current blasting levels range from 1.5mm/s – 6.05mm/s PPV with an average of 3.5mm/s PPV between July - September.

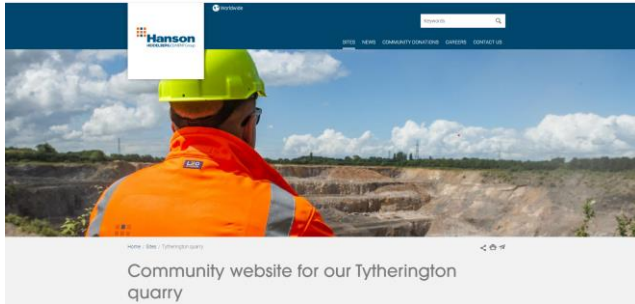


➤ Rail link

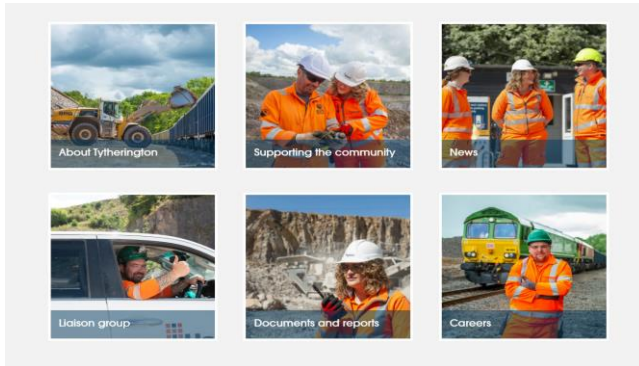
- Currently loading 1 train consisting of 34 wagons during the day shift and 1 during the night shift.
- Total of 2500t per train – equivalent to 131 road wagons.
- Returning to 2019 operating levels later in October, due to Network Rail capacity and customer requirements.
- New pattern will see 3 x 22 wagon services through night and 1 x 34 wagon service during the day – equivalent to 7900t per day. Loading 6 days per week.
- Informing local residents of adjustment and posted to our new Tytherington website.
- Around 45% of the quarry's output is transported by rail, saving more than 100 lorry movements a day, helping to cut carbon emissions.



➤ New Tytherington community website



email TytheringtonQuarryenquiries@hanson.biz
or call us on our freephone number [08001601321](tel:08001601321)



➤ Tytherington quarry update

Ongoing projects

- New HV Substation that feeds Tytherington Village.
 - Moving the current sub that lies within the quarry to outside the boundary with all new switchgear and equipment.
- New weighbridges
 - Quicker and safe HGV turnaround
- Constructing new haul road from quarry to rail sidings
 - Save fuel and carbon and potentially reduce traffic on site.
- Electrifying quarry pumps
 - Reduce fuel usage and save carbon.



➤ Tytherington quarry update

Land and minerals update

- Permission for new static plant approved by South Gloucestershire Council.
- Parent company Heidelberg Materials supportive of multi-million proposals and is expected to make Final Investment Decision next year.
- Additional 10+ direct employees.
- Load and haul options.
- Timing will shape future strategic approach



➤ Tytherington quarry update

Environmental, landscape and biodiversity update

- Heidelberg Materials Quarry Life Award – Tiny Forests study:
 - Earthwatch charity feasibility studies and public consultation, re opportunities of replacement of ash-die-back affected trees with a Tiny Forest.
- Badger sett relocation under NE Licence underway.
- New hedge planted along boundary with Slad field, but many drought-replacements will be needed.
- Woodleaze M5 screenbank plantation thinning underway, to be completed when contractor available and to tackle trees in proximity to 11KV o/h lines.
- Woodleaze internal restored benches being seeded with grass and wildflower as part of longterm interim habitat creation.



> Community giving / initiatives

- Our approach is to prioritise support for initiatives supporting:
 - Education, skills, and wellbeing
 - Protecting/enhancing the environment and supporting biodiversity and sustainability
 - Promoting the community and heritage of the area
- Assistance is prioritised to groups making applications within a three-mile radius of the quarry.
- More details at: www.hanson-communities.co.uk/en/whatley-and-westdown-quarry-community-page/supporting-the-community
- Recent beneficiaries:
 - Tytherington Rocks FC Material Donation: – 60t, May 2022
 - Wooten PARC Material Donation: 350t, October 2022
 - Tytherington Jubilee Event 2022: Sponsorship towards raffle prize, raffle ticket costs and hire of marquee.
 - Looking to donate 2 block stones to local family for memorial stones
 - Sponsor resident for fundraising Royal British Legions: £200



➤ AOB: Stakeholder engagement

- Meeting with Luke Hall MP.
- Open Day – planned late summer 2023. Activities to include blasting demonstration, family activities, etc.

