

**Tytherington Quarry
Community Liaison Group Meeting
26th January 2023
Meeting Room at Tytherington Quarry**

MINUTES

ATTENDEES:

- Keith Spooner (KS) Resident
- Hugh Johnson (HJ) Tytherington Parish Council
- John Graham (JG) Alveston Parish Council
- Benj Emmerson (BE) Thornbury Town Council
- Mike Brown (MB) Hanson Aggregates, southwest area operations manager
- Jenna Roberts (JR) Hanson Aggregates, Tytherington quarry unit manager
- Michelle Beasley (MMB) Hanson Aggregates, secretariat
- Andy Duncan (AD) Hanson principal landscape manager
- Trystan Mabbitt (TM) Hanson consenting & development manager
- Samantha Stagg (SJS) James Reed public relations (Hanson's PR agency)
- Cllr Jon Lean (JL) South Gloucestershire for Frampton Cotterell Ward
- Lindsay Saunders (LS) SGC PROW Officer

APOLOGIES AND MEMBERS ABSENT:

- Simon Ford (SF) South Gloucestershire Council Planning and Minerals Dept
- Neil Higgs (NH) South Gloucestershire Council (EHO)
- Paul Chapman (PC) Iron Acton Parish Council

AGENDA FOR TYTHERINGTON QUARRY COMMUNITY LIAISON MEETING

1. **Welcome and introduction to new attendees** - Chair Mike Brown (MB)
 - On-going chairing of group

2. **Hanson Operational Update** – Jenna Roberts (JR)
 - Operations and logistics including road and rail.
 - Update re including rail.
 - Site security.
 - Feedback received.
 - Community giving.

3. **Environmental, landscape and biodiversity update** – Andy Duncan (AD)

4. **Land and Mineral Planning update** – Trystan Mabbitt (TM)

5. **AOBs**

6. **Date for future meetings**

MEETING MINUTES

1. Welcome and Chair introduction

- MB introduced himself and welcomed attendees to the meeting. For the members that did not attend the first liaison meeting in October MB advised the purpose of these meetings was to engage and interact with the community which is a Hanson UK policy.
- MB advised that due to local council elections being imminent he was happy to continue to Chair the meeting with a format that is well established and consistent. In the future he hopes that a volunteer from one of the councils represented would take on the role of independent Chair.

2. Hanson operational update

- MB ran through the actions from the previous liaison meeting. He advised re blasting that there was current data to share during the course of the meeting.
- MB said JR would also be giving an update in this meeting on security and a meeting she had had with Network Rail regarding trespassing. He also said with PC not being in attendance we would leave the action about a woodland in Iron Acton until the next meeting.
- MB advised the Tytherington open day was planned for 9th September 2023.
- MB advised he was trying to get a Network rail representative to attend a liaison meeting, but the lady we have been working with had just gone on maternity leave but she would get someone to attend in the future if members thought it would be useful.
- MB advised re resident visits that it was an open invitation that we are more than happy to facilitate. Contact JR any time to organise.
- MB advised that JR had prepared a diagram of the train loading process which she will present in this meeting.
- MB asked the group if they were happy with the draft minutes of the meeting of 20th October 2022. All attendees agreed they were happy. Minutes of previous meeting confirmed.

3. Hanson operational update and 4. Feedback

Production update

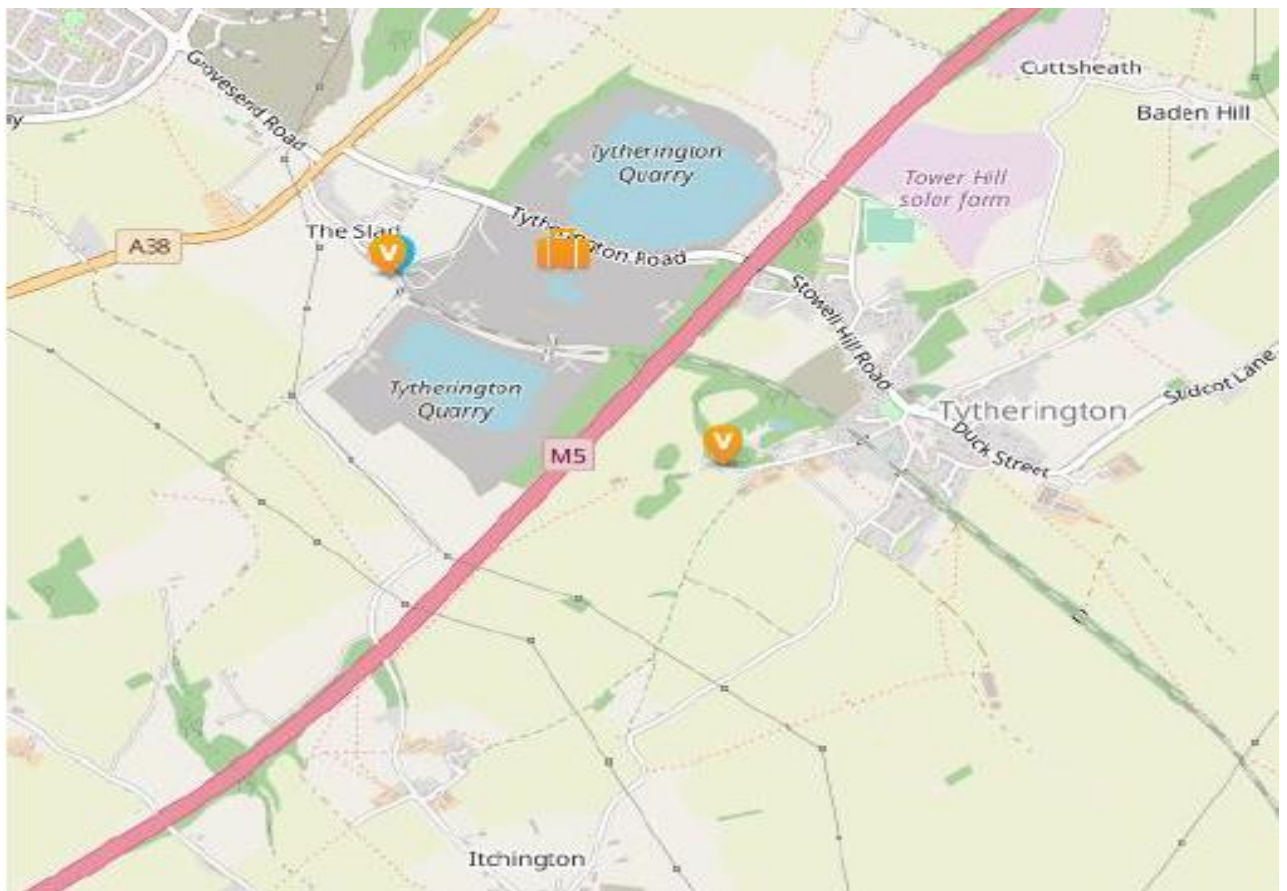
- JR advised the site had recently been recruiting and was pleased to see local people have been applying. She said she had employed a new member of staff who lives nearby.
- JR said she was recruiting for a further position which could be found at www.hanson-careers.co.uk/en

- JR reminded everyone of the current crushing times, which are 06:00 – 17:00 Monday to Friday and train loading from 18:00 – 07:00. Saturday operations from 06:00, with 1 train loaded. Currently running 22 trains per week.
- KS said with 22 trains a week, it seems much quieter than previously, and the shorter trains much better from a resident's point of view.
- MB advised that Network Rail are carrying out maintenance works which affect the speed limit of the trains. We have no plan to increase volumes at present. Currently the requirements both externally and internally are for a maximum of 24 wagons per train. This is dependant on two factors, customer capability to handle more than 24 boxes, which is not the case, and wagon availability which currently restricts the maximum requirement of 24. Should this change, this forum will be briefed.
- JG said most of the complaints received are about the trains, he asked if there was less noise because the trains are shorter.
- MB confirmed it would be less noisy as there is less shunting and activity in the vicinity of resident's houses.
- SS said to bear in mind that Network Rail had been experiencing industrial action, which had impacted on its scheduling of works.
- JR added that with 22 wagons instead of 34, it takes less time for them to load, so also reduced activity.
- JR said she is meeting with Network Rail weekly to gain updates on works progress of the maintenance programme on the main Network Rail incoming line.
- MB said Hanson was more than happy to share the updates we had from Network Rail with anyone who wanted to know and would continue to apply pressure for Network Rail to communicate with those affected.
- JR said the branch line was 6 miles long, Network Rail are currently carrying out repairs to a two-mile section at the Yate end of the track. The 0–2-mile section faults will be addressed by the end of March as it is here that the track requires the most maintenance work. The next stage will be the 4-6 miles section and 2–4-mile section. She said she had asked Network Rail about acoustic fencing, but they said the repairs should be completed before it would be feasible to put up an acoustic fence. JR also said she asked if they would prioritise the high mileage section that goes through the village, however, it is up to Network Rail to plan their work package/s, and this may mean the line speed cannot increase until all the work on the line has been done.
- SS said we initially sent out a letter to the residents directly impacted, informing them of the changes to the train timetabling. This was then followed up by a door-dropped letter to near neighbours explaining why Network Rail had subsequently imposed speed restrictions on the line as it need to carry out essential maintenance.

Blasting recap

- JR gave an update on blasting. She said regarding vibration monitoring, there were two fixed monitoring stations installed in August 2022 at The Slad and West Street.
- JR said there was also remote vibration monitoring in locations at The Slad, West Street, Itchington – Lime Kiln Court and the pylons on Itchington Road.
- JR advised Hanson were currently blasting on levels 0-3, and not blasting at present on levels 4-5 due to high water levels.

Map showing location of vibration monitoring



- JR showed data from Q4 2022 vibration monitoring (in the table below) and advised the permitted vibration levels for blasts at Tytherington quarry are 9mm/s Peak Particle Velocity (PPV) with a 95% confidence and/or 12mm/s with a 99.9% PPV confidence at any time.

Vibration – Slad	Vibration – West Street	Vibration – Pylons
Average Oct-Dec 2022 – 2.36mm/s	Average Oct-Dec 2022 3.19mm/s	Average 22/23 – 47mm/s
AOP – 110dB	AOP – 100dB	
2023 – average 2.5mm/s	2023 – average 3.9mm/s	
AOP – 124dB	AOP 115dB	

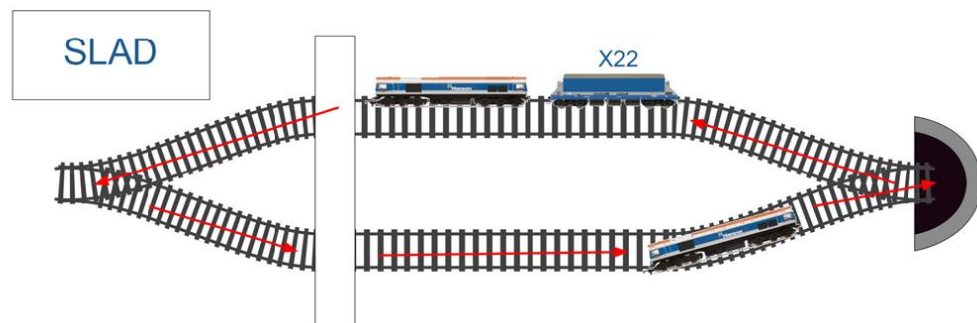
- KS said the table shows the average vibration reading, do you know what the maximum reading reached was?
- JR replied since October, the highest PPV at the Slad was 6.05mm/s and the lowest was 0.95mm/s. For West Street the highest was 6.40mm/s and the lowest was 0.55mm/s. She said she would change the information for the next meeting to include minimum and maximum readings instead of averages.
- KS said he felt the blasting information would be good to give to the residents, so they can see you are operating within the permitted limits.
- MB said blasting is controlled by stringent legislation, the “1999 Quarry Regulations”, and blasting is highly controlled and regulated. All quarries must abide by these. By law, Hanson must employ competent people. Specialists are appointed to carry out the design and produce a blast specification, which is then checked by the “competent” manager to ensure everything is in order before blasting goes ahead.
- BE asked JR if she could explain the pylon figures as he didn’t understand why they are above the permitted vibration level.
- JR said the 9mm/s and 12mm/s are residential vibration levels. The high voltage pylon vibration level is 50mm/s because it’s closer to the quarry. If there was a house close to the pylon, then we would have to operate at 12mm/s. The blasts in this area are designed specifically to comply with the British Standards that have been discussed in detail with National Grid.

Changes to the pattern of trains & rail link update

- JR explained how the trains are loaded currently and compared to how they were loaded previously. Diagrams below.

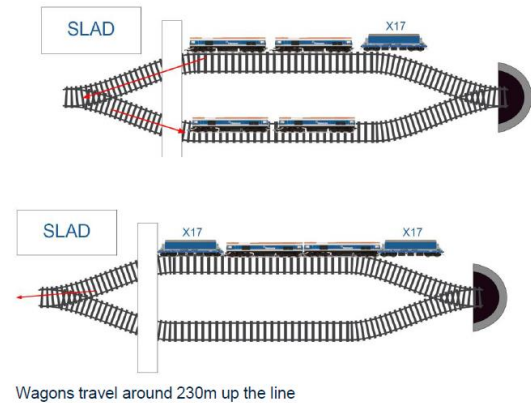
➤ Current pattern for trains

- Loco + 22 wagons – just the loco splits and moves over the points at the bridge



➤ Previous pattern

- Jumbo trains: Loco + 34 wagons
- Two portions – 2 x loco + 17 wagons
- Leave 17 wagons on site
- 2 x loco fetch other 17 wagons
- Locos in middle push wagons further up line



- JR advised the new rail link pattern was introduced in October, with 3 x 22 wagon services through the night and 1 x 34 wagon service during the day. Transporting 7900t of aggregate per day, loading 6 days per week.
- MB said Tytherington sidings didn't require any significant maintenance or repairs in the future as investment had been implemented in the last two years.
- MB added that inspections are carried out frequently by staff and specialist rail engineers at Tytherington, and because of this process, in the hot weather last year, it was identified that some of the track had buckled.
- KS said he felt the residents would be happy that Hanson are working with Network Rail on their behalf.

Site security

- JR showed a map of the quarry boundary (see below) and explained the quarry regulations gave guidance on how the quarry should be fenced off and warning signs in place. She said we've been upgrading the orange section on the map.



- JR said the fencing and signs should be checked on a monthly basis, but at Tytherington we do it on a weekly basis, when completing other tasks e.g., blasting.
- JR said there had been recent improvements in the pylon area and field, with hedge planted. Other areas identified for enhancement would be The Slad, opposite the weighbridge.
- JR said security was brought up in one of the meetings being held weekly with Network Rail, and Network Rails have advised that it is its intention, to increase trackside security within 6 months.
- JR advised she had highlighted to Network Rail the need to improve security by the A38 needed to better prevent trespassers, and scramblers accessing the track. Network Rail appreciated the feedback. It carries out national campaigns highlighting the dangers to the public.
- JL asked if the tunnel was closed. JR replied yes it was and had been bricked up. She said the bridge was owned by South Gloucestershire Council and Network Rail want to put up a fence to stop trespassing but are having trouble getting permission.
- KS said Network Rail don't seem to keep their areas tidy, like cutting trees, repairing paths, and putting signs up.
- MB said we would pass the feedback on to the Network Rail representatives that they engage with.
- MB asked KS if the question he raised at the last liaison meeting about security had been answered. KS replied that he thought what Hanson have been doing is great, but it would be good to have contact details of Network Rail.
- MB asked JR to speak to our Network Rail contacts.

Tytherington ongoing projects update

- JR advised a high voltage substation that feeds Tytherington village is being moved from within the quarry to outside the boundary with all new switchgear and equipment.
- JR advised there is a plan to install new weighbridges and a new wheel wash, for a quicker and more effective HGV turnaround. Updates on timings will be included in future meetings.
- JR said they would be constructing a new on-site haul road from the quarry to the rail sidings to save fuel and carbon also potentially reducing traffic on site.
- JR said there was a plan being formulated to electrify the pumps in Grovesend in 2023, and Woodleaze in 2024. This would enable the site to reduce diesel usage on the supply to generators and save carbon. Updates will be provided at future meetings.

5. Environmental, landscape and biodiversity update

- AD advised the new badger sett created last summer remains unoccupied and the old sett has been closed off in accordance with Natural England's licence method statement

in November. Moving the badgers supports the development of the new haul road within the site which, as JR has previously mentioned, will help cut haulage distances and CO₂.

- AD advised Hanson are still keen to facilitate discussions with Earthwatch and Tytherington parish council following recent discussions re a Tiny Forest.
- BE said since the last meeting we have appointed a climate and environment office whose task is to find places to plant trees. Can I put her in touch? AD said he would be more than happy to speak with her.
- AD advised the hedge in The Slad field that suffered due to the drought, has had the lost trees replaced.
- AD advised the Woodleaze M5 screenbank plantation thinning was on-going and would be completed when a contractor becomes available, and to tackle trees in the proximity to 11KV overhead lines.
- AD advised the internal restored benches at Woodleaze was being seeded with grass and wildflowers as a part of on-going long term interim habitat creation.
- MB said Heidelberg genuinely care about the environment, and for those that were not present at the last meeting, Heidelberg have big investment plans in creating zero carbon cement in Norway, Germany and also North Wales.
- AD mentioned new proposed sustainability targets soon to be launched by parent Company Heidelberg Materials that would dedicate a proportion of every extraction site for nature, as a contribution to our aim of becoming "Nature Positive".

6. **Community Giving update**

- SS advised Hanson's approach is to prioritise support for initiatives supporting
 - Education, skills and wellbeing
 - Protecting/enhancing the environment and supporting biodiversity and sustainability
 - Promoting the community and heritage of the area
- JR advised recent beneficiaries being Itchington Road who received £5.3k and stones were donated for a local memorial headstone.
- KS asked what the Itchington Road donation was for?
- JR replied there is a patch of land with a house on the left and the farm on the right, that people keep reversing vehicles over. A resident contacted me about installing kerb stones to deter people from doing it.
- HJ thanked JR for her help with it.
- JR advised she had been contacted about help with a school and local tennis courts. JR and SS will be in contact.

7. Land and mineral planning update

- TM advised permission for a new static plant has been approved by South Gloucestershire Council last year.
- TM advised parent company Heidelberg Materials were supportive of multi-million-pound proposals and is expected to make the final investment decision towards the end of this year.
- TM said Hanson are now looking at future extraction and the life of the quarry. There are currently circa 20 million tonnes available with a reserve of less than 10 years remaining.
- TM said Hanson will be trying to shape planning for the next 10 years, then the next 25-50 years.
- TM advised there should be more information by the next meeting. Hanson will be going to the south of the quarry to try and identify what minerals are there, only going where the mineral is.
- KS asked if the multi-million-pound investment has planning approval.
- TM said yes, it is approved so there is nothing to stop it other than the money.
- KS asked if future plans for the quarry were subject to a pre-application.
- MB advised Hanson must submit detailed plans.
- MB asked SS if she could email everyone telephone numbers for Hanson contacts in the meeting.

8. AOBs

- AD advised Hawthorns were being planted.
- JR advised the works to move the high voltage substation outside of the quarry gate and upgrading the switch gear had all been completed by Hanson. The next step is for the National Grid to deliver and install their new switch gear which is planned for March.

Contact details

Email: tytheringtonquarryenquiries@hanson.biz or call us on our freephone number 0800 160 1321

Tytherington Community Web page is
www.hanson-communities.co.uk/en/sites/tytherington-quarry

Hanson Careers
www.hanson-careers.co.uk

Summary of Actions

- 1) For the next meeting JR to prepare the blasting information showing minimum and maximum mm/s instead of averages.
- 2) SS to email attendees telephone numbers of Hanson contacts.
- 3) PC to liaise with AD to see if his contacts can help with the woodland in Iron Acton.
(from the previous liaison meeting)

Proposed dates for next 4 meetings

Thursday 27th April 2023 17:30

Thursday 27th July 2023 17:30

Thursday 26th October 2023 17:30

Thursday 25th January 2024 17:30

[ENDS]