

Craig yr Hesg Quarry

Site Biodiversity Action Plan



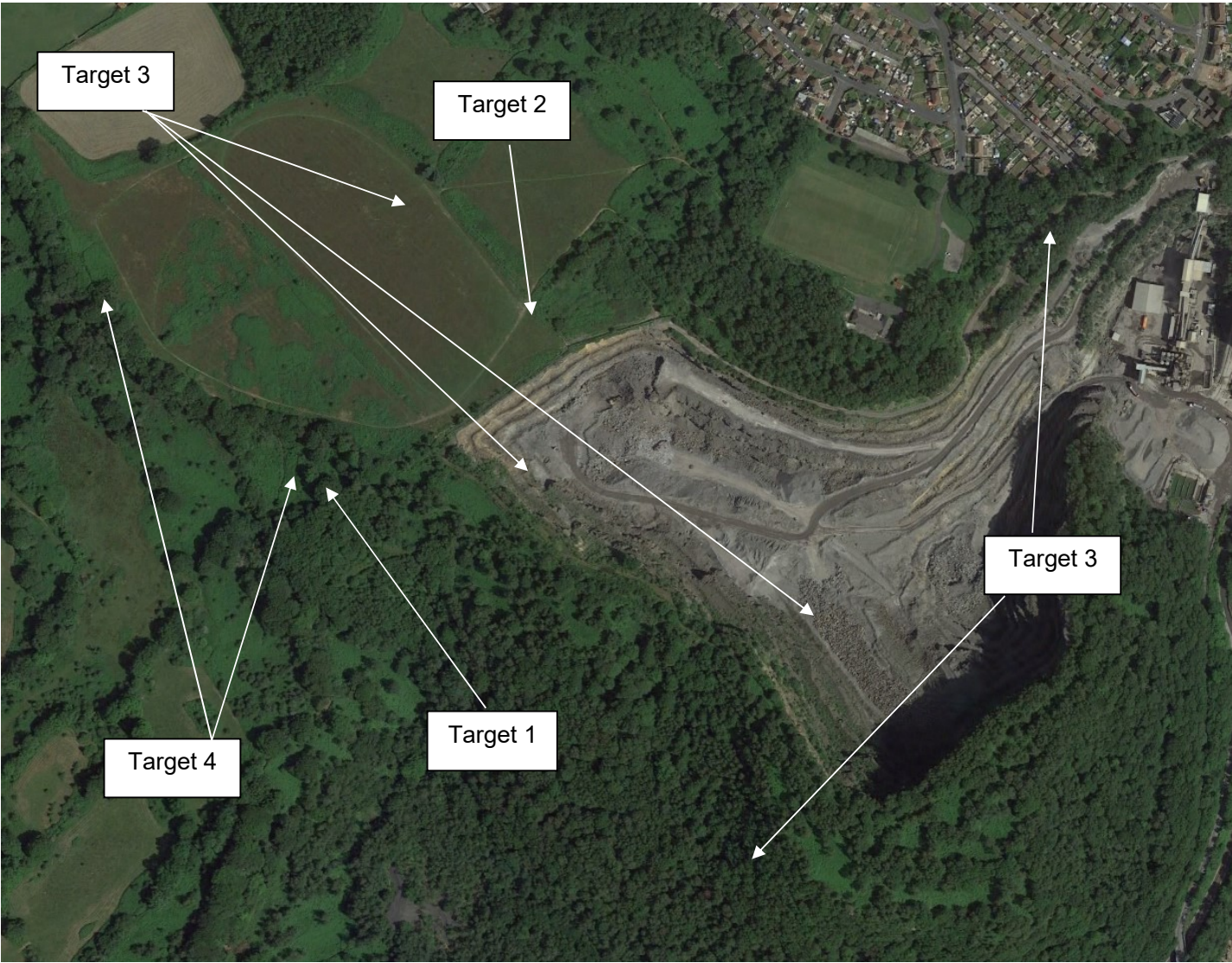
Prepared: November 2011

**Updated: August 2023
August 2013
November 2018**

Site Information- Craig Yr Hesg

Site Name and Location (incl. Grid Ref.)	Craig yr Hesg Quarry, Pontypridd ST 07930 91820 (plant site)
Heidelberg Materials Company	Aggregates
BAP(s) that will be targeted	UK BAP, Wales BAP, Action For Nature: The Local Biodiversity Action Plan for Rhondda Cynon Taff
BAP Habitat(s) to be developed	Neutral Grassland Upland Oakwood Acid Grassland
BAP species to be encouraged	Grass snake, adder, common lizard peregrine falcon, barn owl, bullfinch, linnet, buzzard pipistrelle bat, soprano pipistrelle bat, speckled wood butterfly, grayling butterfly
Designated Natural Area	None
Background and site description	A high PSV gritstone (pennant sandstone) quarry that consists of a main extraction area with a newly approved c. 5ha extension. The site lies within an undulating landscape of incised valleys and ridgelines. The surrounding habitats include acidic, broadleaved woodland, characterised by oak, birch, rowan and ash. Adjacent open habitats comprise acid-influenced neutral, species-rich grasslands. Within the Heidelberg Materials' ownership there are pockets of woodland and several hectares of species-rich grassland and scrub.
National Designations (SSSI, SAC, SPAs, RAMSARs and NPs) within 500m	None
Resource Requirements-comment on cost if appropriate	Restoration earthworks, tree planting, grass seeding and BAP habitat management will be covered within the site restoration budget.
Contribution to biodiversity	Quarry floor and bench restoration will create suitable blocks, strips and pockets of woodland and species-rich grassland on low fertility quarry waste substrates. Screen banks for the new extension will provide important wooded landscape links. Through positive management of existing habitats within the Company's control the associated target species will be encouraged.
Partners and Local initiatives	RCT Local Nature Reserve on the adjacent Coed Craig-yr-Hesg woodland , gifted by Heidelberg Materials.
Other documents supporting the site BAP	Quarry development and restoration plans, ecological surveys/ reports, quarry extension Environmental Statement, TPO designation, woodland and species management plans required under conditions 7, 51 and 38.

Site Layout



Action Plan

Item No.	Objective	Biodiversity Feature	Targets	Task	Assessing Indicator	Responsible Person	Timescale (Completion)
1	To improve the quality of existing grasslands	Species rich, neutral, acid influenced grassland, slow worm, grass snake, adder, common pipistrelle, common lizard, barn owl	Maintain and increase the current extent of species rich grassland by reducing and preventing scrub encroachment.	1. Reduce scrub cover in Zone 7 to 20% in line with Species and Habitat Management Plan (SHMP)	Scrub cover reduced to 20%	Landscape Architect	Q1 2025
				2. Top bracken annually for first 5 years to achieve mosaic of bracken and grassland	Open grassland with bracken patches	Landscape Architect	Annually until 2029 then reviewed
				3. Eradicate Japanese knotweed and Himalayan balsam	No non-native invasives	Landscape Architect	Ongoing
				4. Create reptile hibernacula in grassland areas with stone and log piles.	Presence of log and stone piles.	Landscape Architect	Q1 2025
2	To increase the extent of species rich grassland	Species rich grassland, slow worm, grass snake, adder grayling, common pipistrelle, common lizard, barn owl	Create new areas of species rich grassland through quarry restoration.	1. Progressively place soil forming material to create appropriate bench restoration profiles <u>before</u> machinery access is lost.	Length of bench soil placement (m).	Site Manager	Ongoing
				2. Source appropriate grass seed mixture for seeding bench restoration and test by trials on final bench restoration areas.	Successful sward establishment.	Landscape Architect	Q4 2025

3	To increase the quality and extent of upland oak woodland	Upland oak woodland, speckled wood butterfly, bullfinch, soprano pipistrelle, barn owl	To positively manage and protect the existing pockets of woodland.	<p>1. Implement requirements of Woodland Management Plan (WMP) as laid out in the work schedule to include the management of hazardous trees, thinning and glade creation</p> <p>2. Protect woodland from stockpile encroachment in line with WMP.</p>	<p>Targets in work schedule achieved</p> <p>Stockpiles re-graded and demarcation implemented</p>	Landscape Architect	Ongoing
			To increase the extent of woodland through the planting and natural regeneration of benches	3. Carry out progressive bench restoration and screen bank planting to approved designs and as per condition 7 scheme.	Bench profiles created before access is lost. Planting carried out in first available season.	Landscape Architect/ Site Manager	Q4 2024
						Landscape Architect	Ongoing
4	Monitoring of target species	Bats, reptiles, habitat condition	To review habitat management works and the impact on target species	1. Implement initial monitoring update as laid out in the SHMP for bats, reptiles and habitats.	Surveys carried out	Landscape Architect/ Consultant Ecologist	Q3 2024
				2. Carry out periodic survey updates as laid out in the SHMP	Surveys completed	Landscape Architect/ Consultant Ecologist	Q4 2026
				3. Erect wildlife boxes in line with WMP and SHMP	Boxes erected	Landscape Architect/ Consultant Ecologist	Q4 2024