

Progressive restoration

Phasing of activity at Westdown quarry

Restoration will be carried out progressively as soon as possible after extraction is completed in any part of the quarry. This means that by the time extraction is complete a significant part of Westdown will already be fully restored.

This progressive 'best practice' approach helps to maintain and promote biological diversity:

- Mineral extraction will start in the south easterly corner of the old quarry, working roughly clockwise
- The restoration of quarry benches to grassland and woodland will take place as soon as practically possible after each quarry face reaches extraction limits
- Measures, such as using tree stumps from within the development footprint to form deadwood habitat piles, will help to mitigate impact on fauna and flora where hedge translocation is not possible
- Extensive upfront mitigation and ongoing planting will help to retain and augment habitat connectivity.

Asham quarry void

Asham quarry void has been left with no active restoration since mineral extraction ceased in the 1980s, meaning the regeneration that has occurred since is not representative of the area's traditional woodland landscape.

Our proposals involve no mineral extraction in the Asham quarry void.

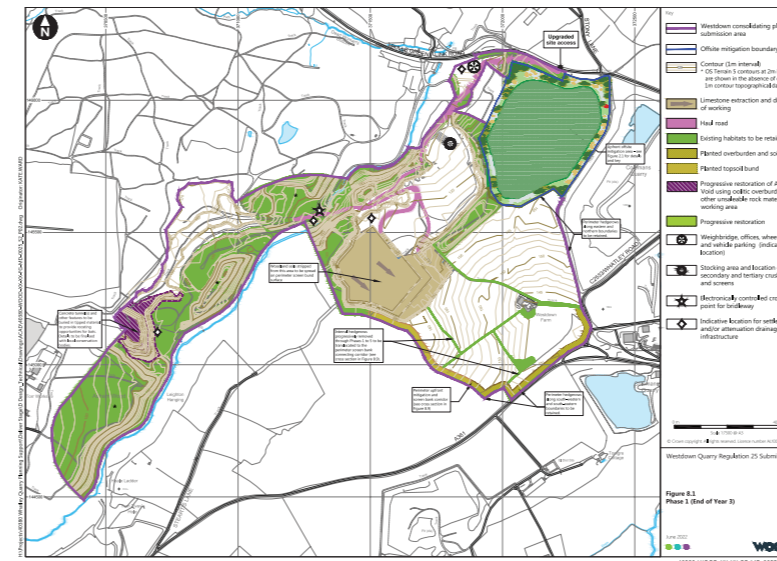
We would restore many parts of the former quarry to more closely reflect the woodland elements of the site prior to extraction, while building on and enhancing some of the opportunities for non-woodland habitats for target species groups.

To achieve this, we will:

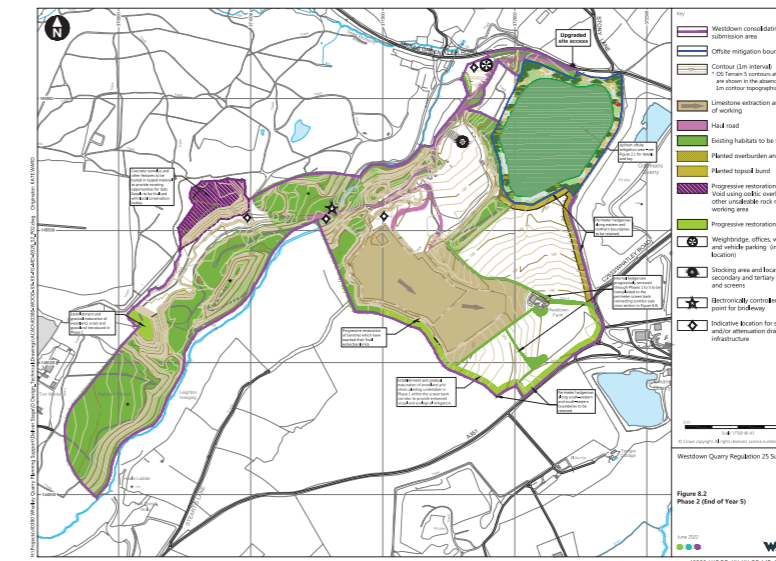
- Salvage and translocate any pockets of calcareous grassland soils
- Retain some small sections of landform as bare rubble/rock screes to enhance habitat diversity as well as some quarry faces important for bats
- Plant woodland zones to replace and improve on bands of naturally regenerated but short-lived birch and willow currently growing on rubble along the former quarry faces.

The restoration programme for Asham quarry void would be complete within 15 years of Westdown reopening and there will be an on going environmental management plan. Over time, it will become an important buffer and extension to the ancient woodland of Asham Wood SSSI.

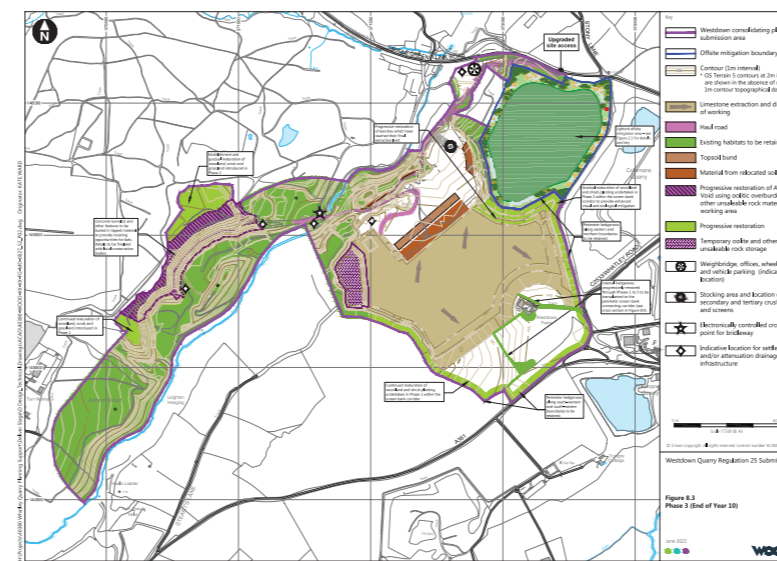
Restoration phasing diagrams



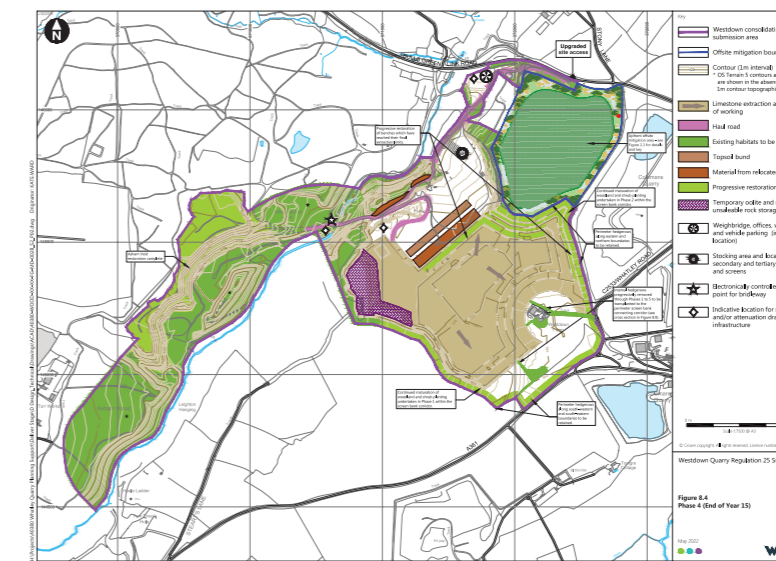
▲ Phase 1: end of year 3



▲ Phase 2: end of year 5



▲ Phase 3: end of year 10



▲ Phase 4: end of year 15



▲ Phase 5: end of year 20

By the time extraction is complete a significant part of Westdown will be fully restored

