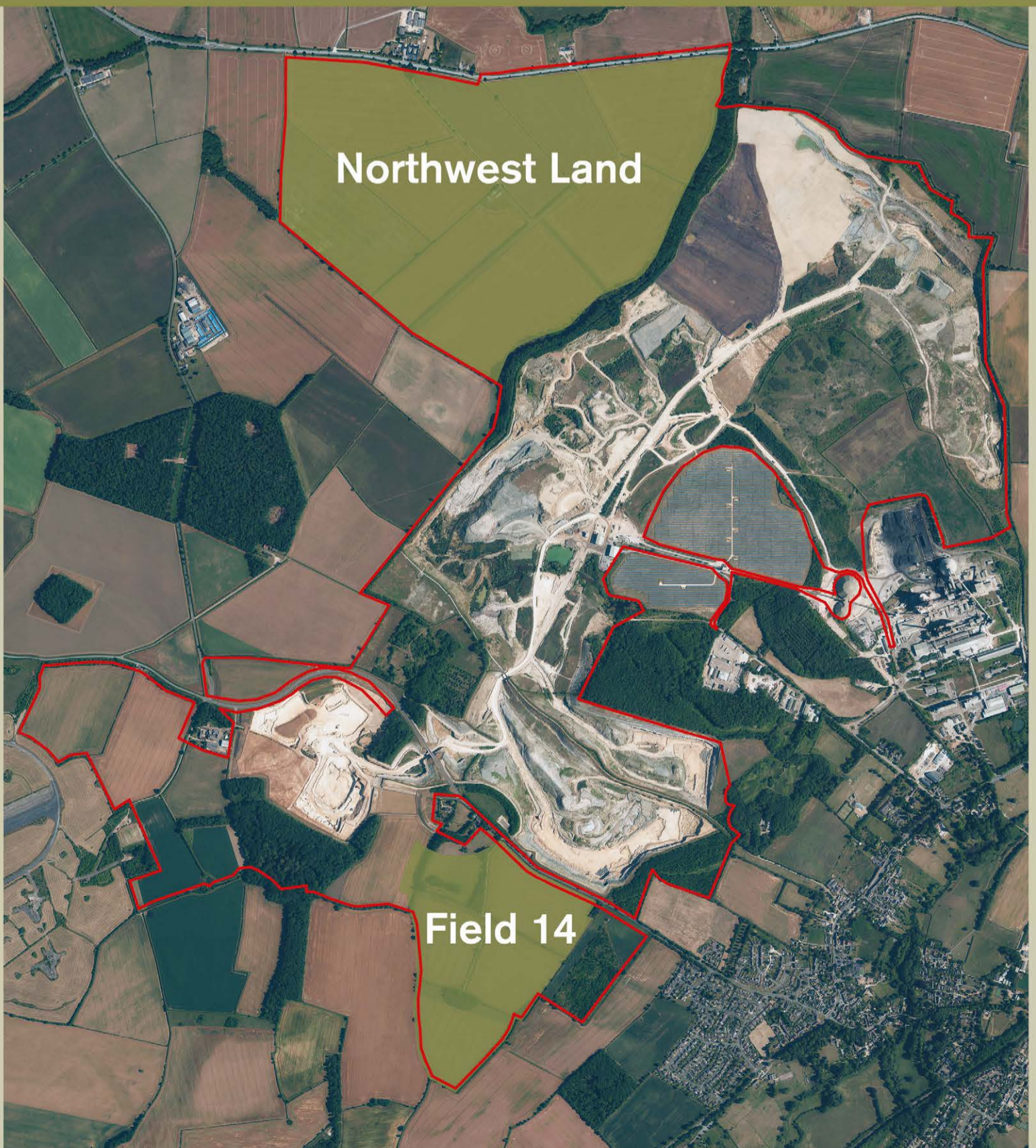


Welcome

to our public exhibition on proposals to extend Grange Top quarry, adjacent to Ketton cement works.

Our aim is to secure the supply of limestone and clays used to make cement, safeguarding the long-term future of the works.

We're here to provide information on our proposals to extend into Field 14 and Northwest Land, answer your questions and receive your feedback.



Our proposals

Around 95% of cement manufactured at Ketton cement works comes from materials derived on site.

The quality and consistency of the raw materials, including high carbonate limestone, silica limestone and various clays – all from Grange Top quarry – is critical to the process.

With mineral reserves running out we are now seeking to extend Grange Top's extraction area and have identified two areas already in Hanson's ownership: Field 14 and Northwest Land. Both are recognised by Rutland County Council as areas for future extraction to meet the needs of the construction industry and help drive economic growth.

The two extensions are equally needed, as Field 14 will provide clay and Northwest Land high carbonate limestone – both necessary raw materials for cement manufacture.

Extraction would take place at the same time across both areas, providing around 25-30 years of minerals supply (depending on market requirements) for the cement plant after current permitted reserves are exhausted.

No changes to the processing facilities at Ketton cement works are proposed as part of these proposals.

Operating hours

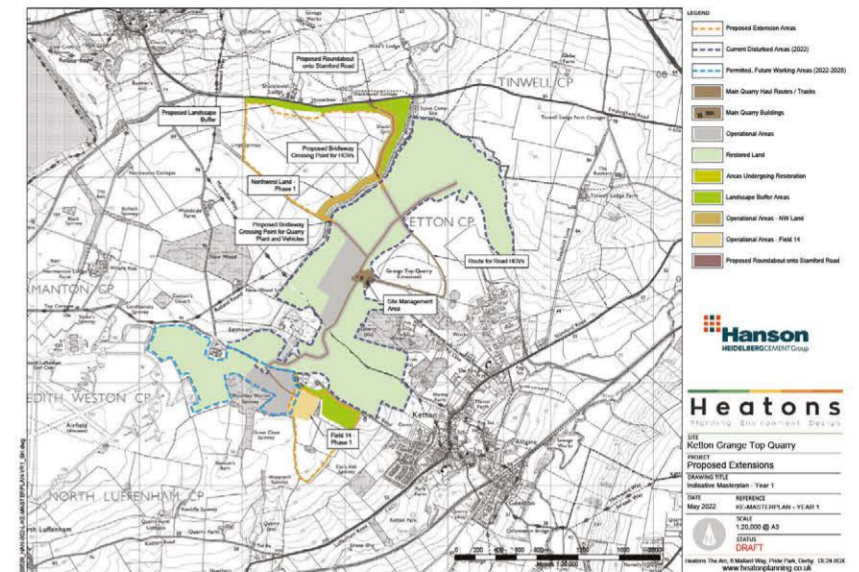
The proposed operating hours for both extension areas would be the same as currently for Grange Top quarry:

- 07.00-19.00 Monday to Friday
- 07.00-13.00 on Saturdays

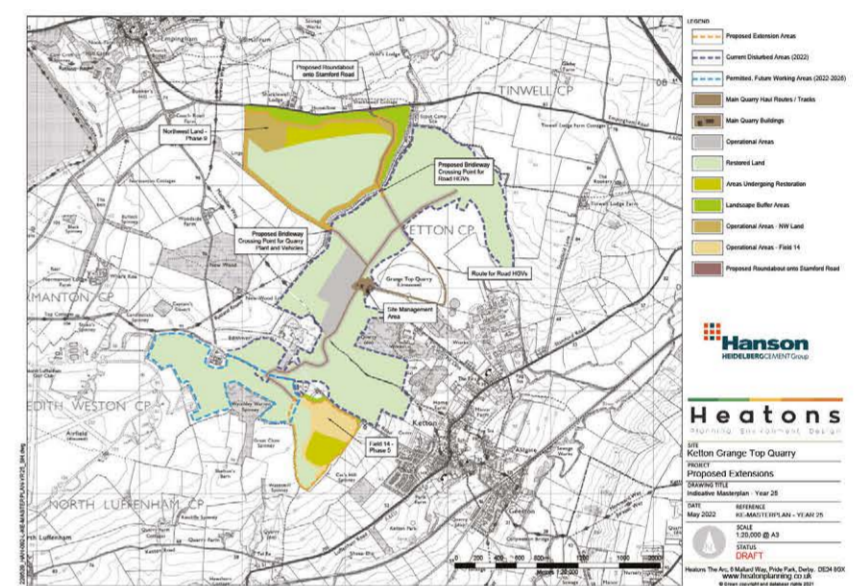
Scheme benefits

Our proposals to extend quarrying into Field 14 and Northwest land will:

- Secure the supply of materials to ensure the long-term future of Ketton cement works.
- Maintain supplies of cement from Ketton – a local, regional and nationally significant resource for the construction sector.
- Provide on-going employment for 240 people, plus many more in the local supply chain.
- Redirect HGVs away from Ketton and Tinwell villages through the development of a new access road.
- Deliver extensive biodiversity uplifts and enhancements to flora and fauna.
- Provide additional footpaths and bridleways, plus improvements to ensure safe access for horse riders and bridleway users.



▲ Proposed extension area year 1



▲ Restoration across most of Field 14 and Northwest Land will have taken place or be underway by the time mineral extraction is completed



Our approach

Our approach has been designed to reduce the impact of our operations on the environment and near neighbours.

It has been shaped by the findings of an Environmental Impact Assessment (EIA), which identifies possible impacts and how they can be mitigated. The EIA covers a wide range of topics, including:

Landscape and visual amenity

Proposed mitigation measures are designed to retain and enhance the character of the local landscape. We will retain many existing perimeter trees and hedgerows and plant more. Parts of the extension areas will also be screened with 3-5-metre-high green embankments to protect views and minimise noise and dust. Operations will also be screened from nearby properties and users of local PROW.



▲ Progressive restoration will closely follow mineral extraction and see the landscape restored to reflect its natural character with significant biodiversity uplift

Ecology

Mineral extraction across Field 14 and Northwest Land will not threaten the integrity of nearby SSSIs. Our plans have been developed to protect and enhance fauna and flora and include the retention and augmentation of existing hedgerows, grasslands and woodland. Any potential impact on wintering birds will be mitigated.

Soil

Over 90% of the land consists of subgrade 3b agricultural land, with subgrade 3a representing 7% and grade 2 just 1%. Some soils will be retained and used to form screening bunds during mineral extraction. During restoration soils will be returned to the quarry floor to form arable and pasture land. Direct soils placement will be carried out in line with best practice whenever possible.

Blasting and ground vibration

The UK has very strict regulations controlling blasting, with modern blasting and drilling techniques designed to minimise vibration and air over pressure. Grange Top quarry already complies with these strict blasting protocols in its existing permission and this means that there is no risk to people or property.

Ground and surface water management

Our flood risk assessment shows that our proposed extensions will not result in an increase in the risk of flooding. As mineral extraction takes place above the water table, dewatering – or pumping out – is not required, but rainfall water will be conveyed to a sump to speed up its soaking away.

Noise

Our independent EIA studies have assessed that noise at key receptor locations will be within the government's recommended limit for mineral operations measured at a property.

At Field 14, noise levels will be reduced by the installation of screening embankments and any effect will naturally reduce as workings move further away from properties.

Dust and air quality

The potential air quality and dust hazards from quarries are well understood and addressed via stringent regulatory controls. Bowers and sprinklers using recycled water will minimise dust generation, plus the development of 3-5m high screening bunds and extensive planting will also contain dust within the site.

Traffic and transport

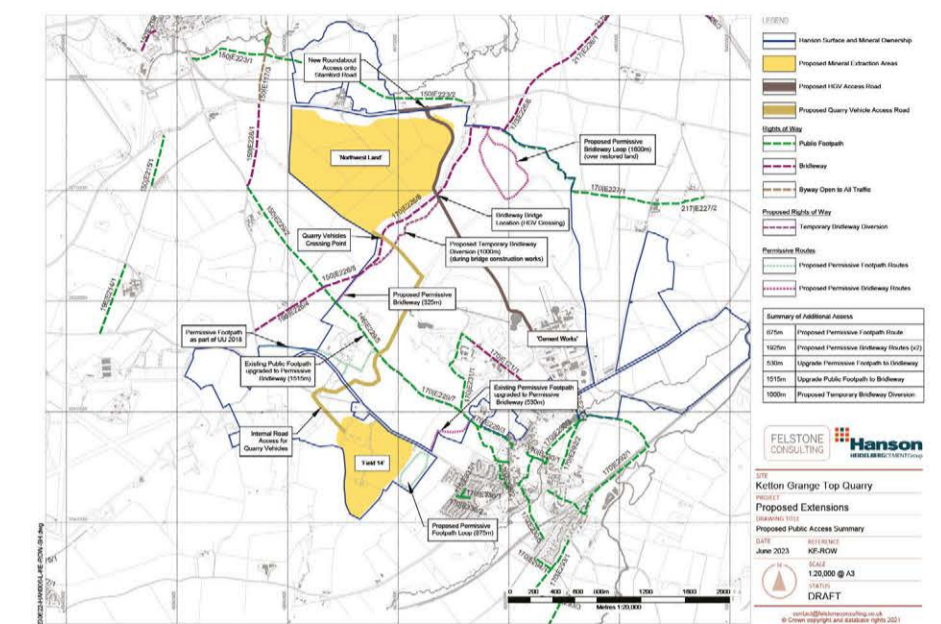
We will create a new access road across Northwest Land to Ketton cement plant. This will reduce current HGV traffic on the A6121 High Steet/Stamford Road through Ketton and Tinwell and has been developed by Hanson in response to feedback received via our local liaison group to reduce the impact of HGV traffic on the local community. This investment, replacing the existing serviceable route, will cost in excess of £10 million.



▲ Planting, landscaped bunds and its siting in a cutting will help screen the new access road

Public Rights of Way

New permissive brideways and footpaths will greatly enhance connectivity in the local area and have been designed to give priority to recreational users.



▲ Public Rights of Way will be enhanced and extended

Archaeology and heritage assets

Our investigations have highlighted that there are several potential archaeological sites in both extensions. Trial trenching will be undertaken in 2023 to evaluate these further and identify their full extent so that a targeted programme of archaeological excavation can be incorporated into the proposals.

Archaeological investigations will take place ahead of each phase of extraction. In the event of any finds, an appropriate level of investigation and recording will be undertaken to mitigate any potential impact.



Field 14

Situated alongside the new Empingham Road, to the southwest of the existing quarry, Field 14 comprises of a total extraction area of 36.2 hectares (ha), plus a further 4.6ha of land that will be used for screening and mitigation.

Access for quarry plant will be via the existing haul road that goes underneath the new Empingham Road bridge constructed in 2020.

Mineral extraction will take place in 5 phases in an anti-clockwise direction, starting closest to the existing quarry operations. Field 14 will supply around 4.5 million tonnes (mt) of clay and 6.4mt of high carbonate limestone, plus silica limestone over approximately 25 years – at current extraction rates. Progressive, or phased, restoration means that some parts of the quarry will be fully restored before extraction in other parts is complete.



Protecting views

Field 14 is already well-screened on its eastern boundary, with previous tree and shrub planting now well-established. In addition, we will create 3-5-metre-high landscaped screening bunds along the eastern and northern boundaries to protect views, contain noise and minimise dust. Hedgerow thickening and additional tree and shrub planting will also take place around the perimeter.

Long range views towards the Windmill, which lies outside of the proposed extraction area, will be protected by tree and hedgerow planting.

Enhancing Public Rights of Way

Our proposals also include enhancements to the Public Rights of Way (PROW) to improve connectivity with existing routes into Ketton.

Ahead of extraction commencing, we will create an 875m footpath around the wooded area closest to the village – known as Field 13. This will have an easy link to the existing footpath on the other side of Empingham Road, which will also be upgraded to create a new 530m bridleway linking Ketton village to the Rutland Round bridleway – providing an off-road connection between Ketton and Stamford.

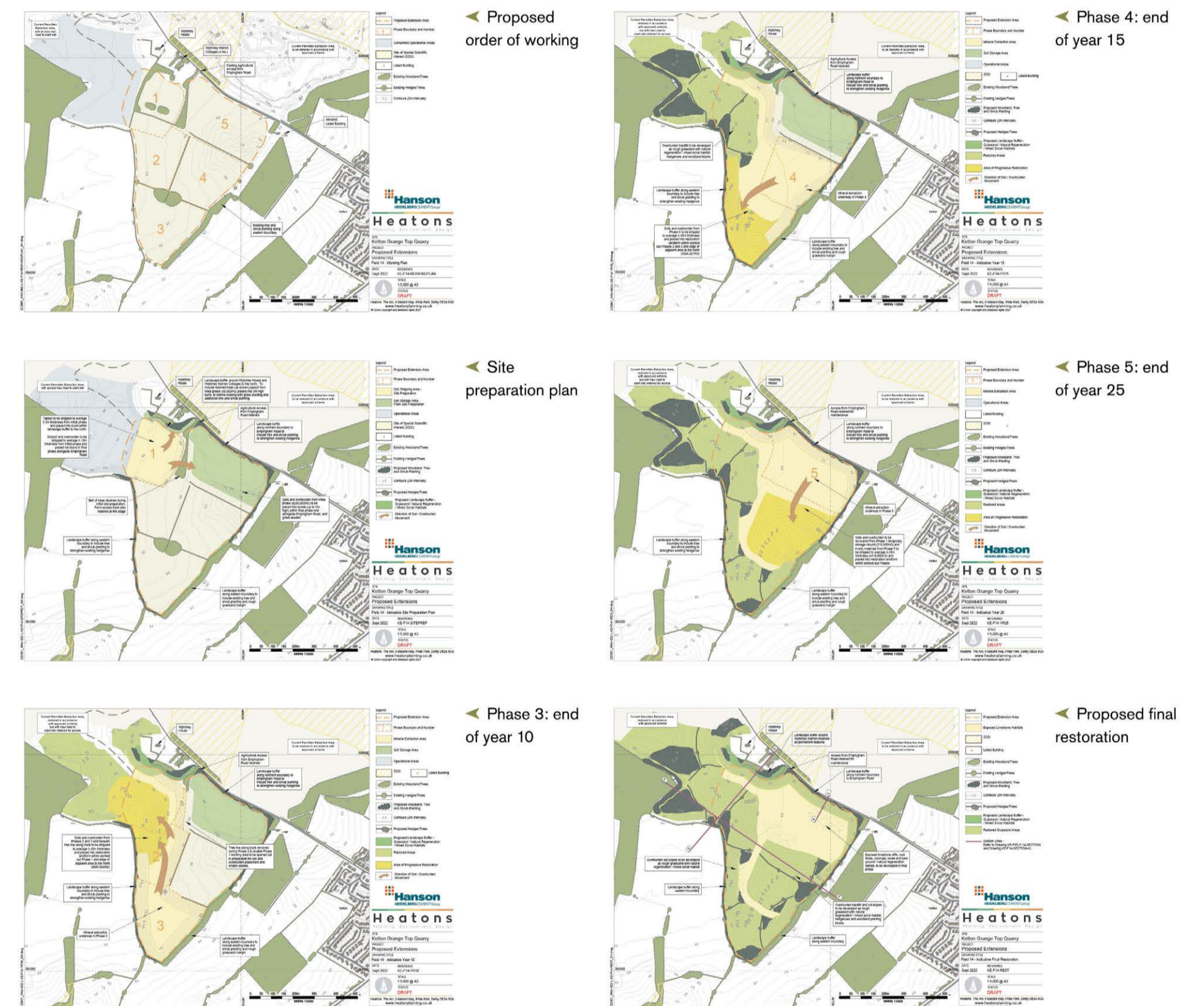
Progressive restoration

Restoration is a key part of our proposal, and we are well known for delivering exemplar schemes.

Using a progressive approach means that as soon as extraction is completed in one phase, restoration can begin. As a result, substantial parts of Field 14 would be restored by the time mineral extraction has finished. Our proposals include using soil and overburden removed ahead of extraction to create restoration-related landforms, plus the planting of woodland shrub and grassland. The

adjacent current permitted area will be restored in line with the approved scheme, with the haul road retained for access. These proposals provide a substantial biodiversity uplift, initially with the establishment of 1.6ha of trees and shrubs and 1.5ha of grassland/natural regeneration on existing farmland, as well as the retention of 1.5ha of trees and 1,500m of hedgerows. When fully restored, Field 14 will comprise of 22.3ha of permanent pasture and species rich grassland, plus 12.1ha of exposed limestone habitats, 1.8ha of new woodland and 900m of hedgerows and trees.

Extraction phasing

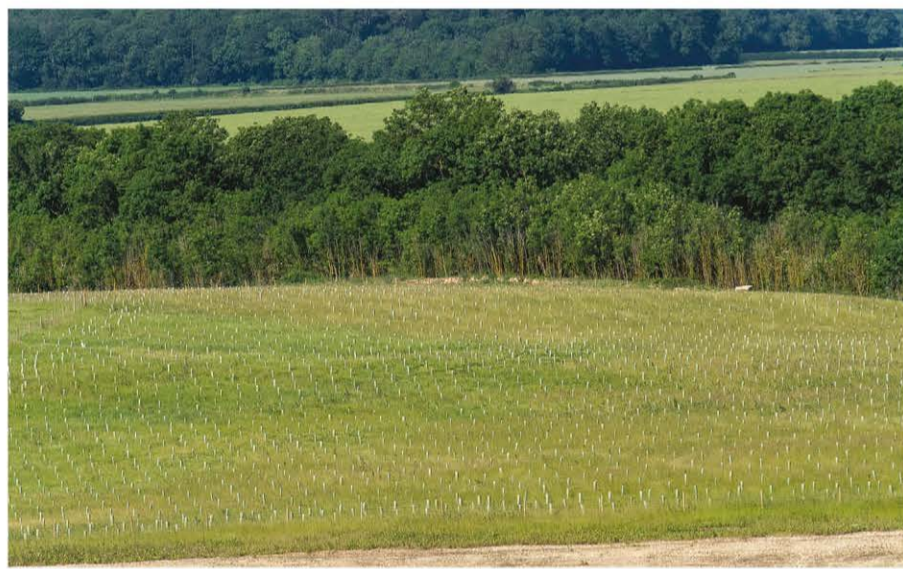


Northwest Land

The proposed Northwest Land area covers 109ha for extraction, plus 30ha allocated for screening and to provide a buffer with restored sections of the existing quarry.

It will provide around 28mt of high carbonate limestone, plus silica limestone to be extracted and progressively restored across nine phases. The Northwest Land does not contain any clay, which is why Field 14 is also being brought forward for mineral extraction at the same time.

Mineral workings will be screened along the Stamford Road via the creation of 3m-high landscaped bunds, which will be planted with trees, shrubs and grassland. Over 3,200m of existing perimeter hedgerows and 9ha of woodland will be retained. Shacklewell Hollow SSSI will be protected with additional planting – creating an extended buffer of trees, shrubs and grassland on the eastern perimeter.

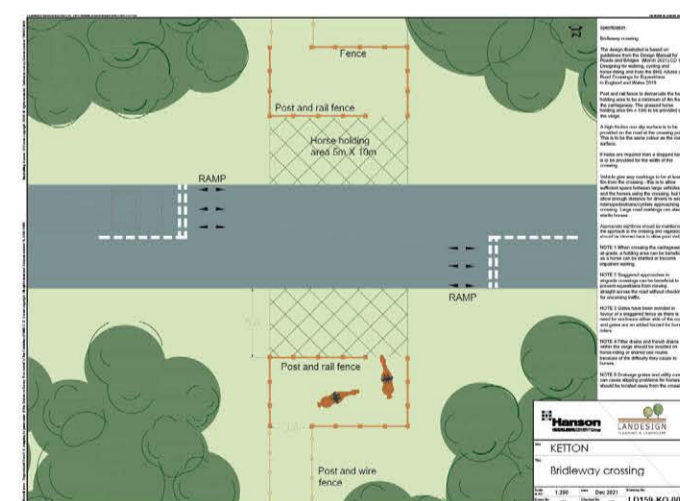


Connecting Public Rights of Way

To improve brideway provision, our proposals include a new 1,600m permissive brideway loop on already restored land, off the existing E226 brideway close to the Stamford Road. In addition, 325m of brideway will be introduced providing an easier link from the E226 to the Hereward Way towards Ketton.

To ensure the safety of horses, their riders, pedestrians and other users, we are also proposing to construct a bridge where the existing E226 brideway crosses the on-site haul road. The new brideway bridge will go over the haul road – with the floor of the road lowered so that the new bridge remains at the current level of the brideway.

Where the brideway E226 intersects with the new access road a new horse-friendly crossing will be created. Brideway users will have priority and the design, with open visibility splays so horses and drivers can see each other – has been developed in line with the British Horse Society's advice on road crossing for equestrians.



◀ Proposed horse-friendly crossing for the new access road

New cement works access road

Our proposals for Northwest Land include the creation of a new access road for the cement plant. This will run through the Phase 1 extraction area, after the minerals have been removed. The level of the road will be lower than surrounding ground level – so that vehicles cannot be seen from the surrounding area.

The fully asphalted road will take around 12 months to construct and, on completion, all HGVs will use this route to access the cement plant. Traffic volumes from the plant will remain in line with current levels but, investment in a new access road will reduce Hanson HGV traffic on the A6121 High Steet/Stamford Road passing through Ketton and Tinwell.

The new 3km access road will run from the cement plant to a new roundabout junction with the A606, west of Shacklewell Hollow. The roundabout's design will meet all modern safety requirements and will include extensive screening measures.

Extraction phasing



◀ Proposed order of working



◀ Phase 5: end of year 15



◀ Site preparation plan



◀ Phase 9: end of year 25



◀ Phase 1: end of year 1



◀ Proposed final restoration

Environment and restoration

Our proposals for Northwest Land have been shaped by the need to protect and enhance wildlife habitats.

Phased restoration following mineral extraction will see the creation of an appropriate patchwork of farmland, hedgerows and woodland. It will provide 83ha of agricultural land, 26ha of exposed limestone habitats and 3,500m of hedgerows and trees.



Securing our future

Our Grange Top quarry has been supplying Ketton cement works for nearly 100 years, but its mineral reserves are running out.

We are proposing to extend the quarry's extraction area to provide around 25-30 years' supply of limestone and clays for use in cement manufacture at Ketton.



▲ Ketton cement works and Grange Top quarry, 1946



▲ Our operations today

Supplying an essential construction material

Cement is an essential building material used in the construction and maintenance of our homes, schools, hospitals, roads and railways as well as major infrastructure that provides vital services such as providing clean drinking water and effective sewerage systems.

Ketton cement works has been operating for nearly 100 years and is of local, regional and national significance, supplying 10-15% of the UK's annual cement requirement. It is used in our concrete plants or bagged for distribution via builders' merchants and DIY stores, as well as transported by rail to our King's Cross depot for use in major construction projects in London and the South East, which have no cement supplies of their own.

We are committed to reducing the impact of cement manufacture and lead the way with new technologies at Ketton – one of the most efficient plants in Europe. It's part-powered by 58,000 solar panels and we are seeking further reductions in CO₂ emissions through investment in carbon capture technologies.



▲ Grange Top quarry supplies raw materials to the cement works



▲ Progressive restoration at Grange Top quarry enhances flora and fauna

Proud of our contribution

Limestone and clays from Grange Top quarry are integral to Ketton's story, with material excavated used to supply the cement works with a small amount used for local building stone.

Restored parts of the quarry have already been returned to nature, with over 30,000 trees and shrubs planted. Many types of birds, including lapwings, cuckoo and sand martins, 26 species of butterfly; plus bats and shrews call the quarry home. Leicestershire and Rutland Wildlife Trust describes parts of the reclaimed site as "a wonderful meeting of nature, people and geology."

The skills and dedication of many generations of local people have supported our success over the last 11 decades. Today, the cement works and quarry is one of the largest employers in the county, employing over 240 people in direct jobs, and many more in the supply chain. Our operations also help underpin local services, as we're by far, the single biggest contributor to business rates in Rutland.

Being a good neighbour

We are committed to open and transparent communication and playing a positive part in the communities in which we operate. Our aim is to be a leading sustainable business, trusted and respected for the ethics we adopt and the products we supply. We've pledged to reach net zero by 2050 and have made significant headway on our route to decarbonisation.

On October 02, 2023, Hanson will rebrand to Heidelberg Materials to align with our parent company and our application to extend Grange Top quarry will be submitted to Rutland County Council under this new branding.



► We are one of Rutland's largest employers



Have your say

We're committed to working with the local community and your feedback will help us shape our final proposals.

You can complete the form [here](#) and pop it into the box provided or submit feedback via our website until 23.59 on 10 August, 2023.



[www.hanson-communities.co.uk/
ketton-community-page](http://www.hanson-communities.co.uk/ketton-community-page)

What happens next?

After reviewing the feedback from local people and other stakeholders, we'll finalise our proposals ahead of submitting a full planning application to Rutland County Council (RCC) later this year.

RCC will then consult with statutory bodies and invite comments from local residents and stakeholders before making its decision.

