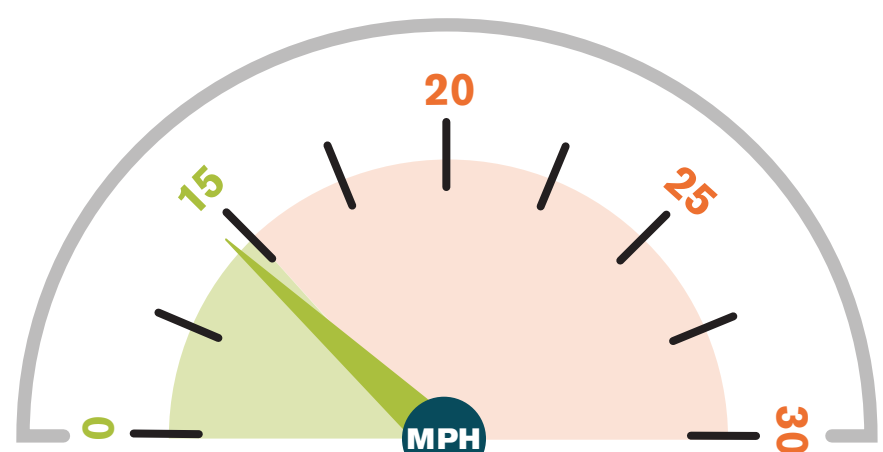


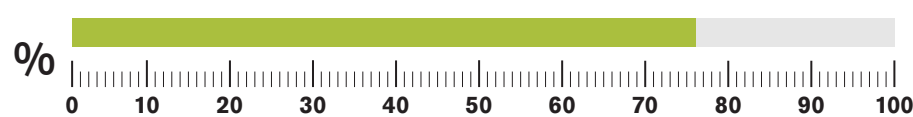


Batts Combe HGV speed monitoring

September 2023

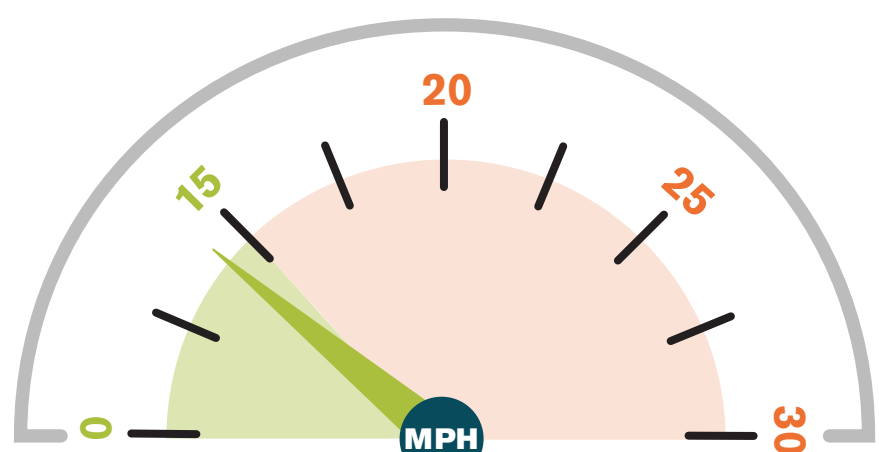


▲ Average speed recorded: 14 MPH

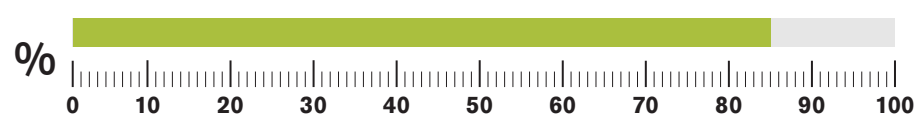


▲ HGVs at/below 15mph: 76%
(No. of HGVs monitored: 37)

August 2023



▲ Average speed recorded: 13 MPH

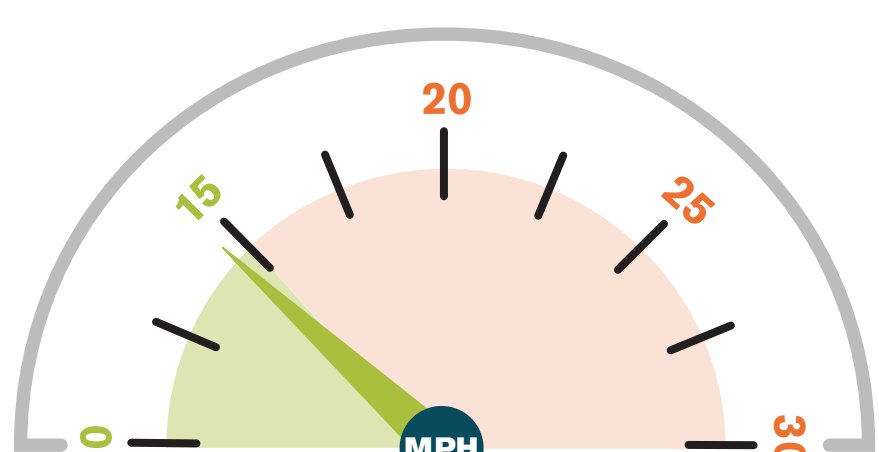


▲ HGVs at/below 15mph: 85%
(No. of HGVs monitored: 40)

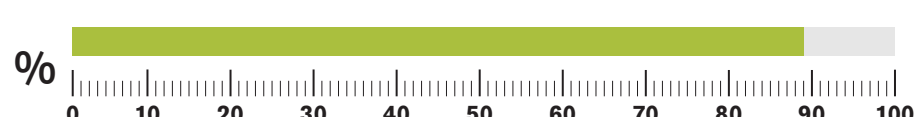
July 2023

Data unavailable

June 2023

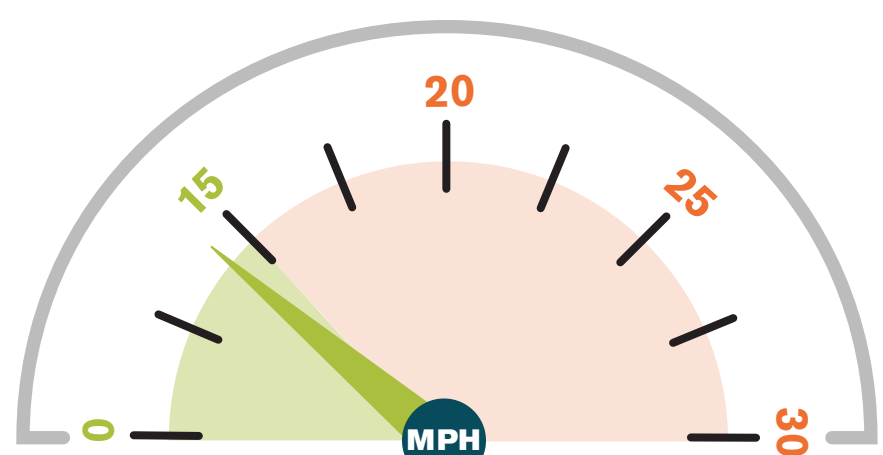


▲ Average speed recorded: 14 MPH

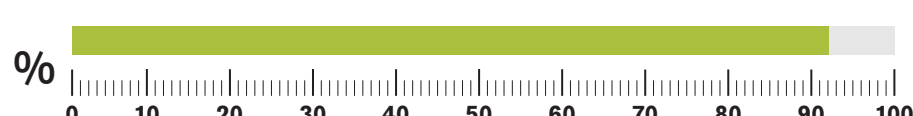


▲ HGVs at/below 15mph: 89%
(No. of HGVs monitored: 36)

May 2023

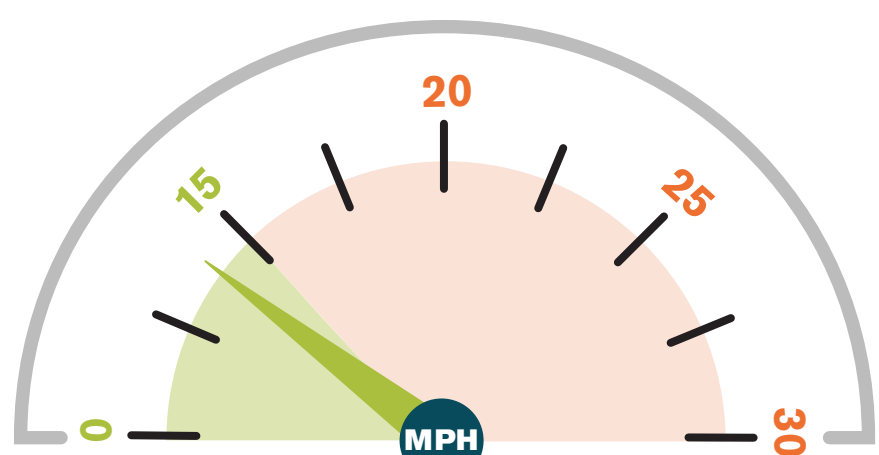


▲ Average speed recorded: 13 MPH

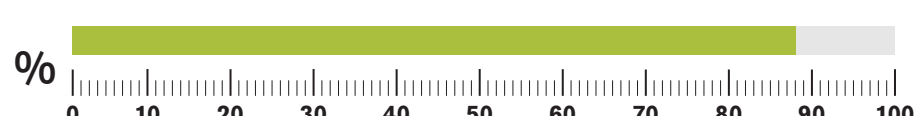


▲ HGVs at/below 15mph: 92%
(No. of HGVs monitored: 38)

April 2023

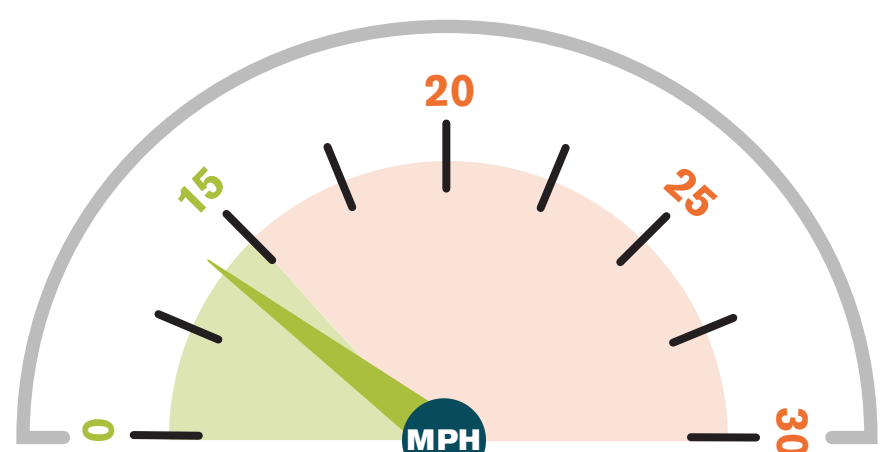


▲ Average speed recorded: 12 MPH

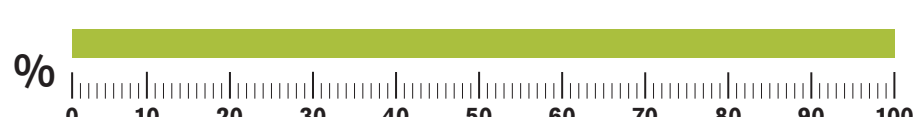


▲ HGVs at/below 15mph: 88%
(No. of HGVs monitored: 117)

March 2023

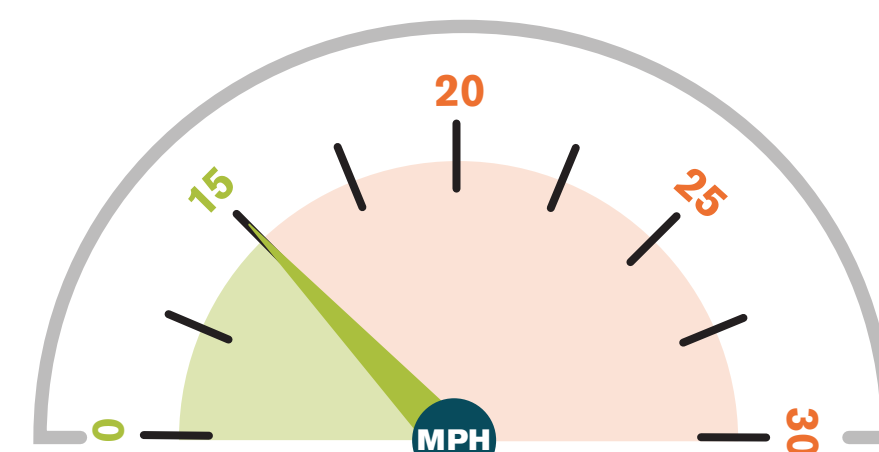


▲ Average speed recorded: 12 MPH



▲ HGVs at/below 15mph: 100%
(No. of HGVs monitored: 10)

February 2023

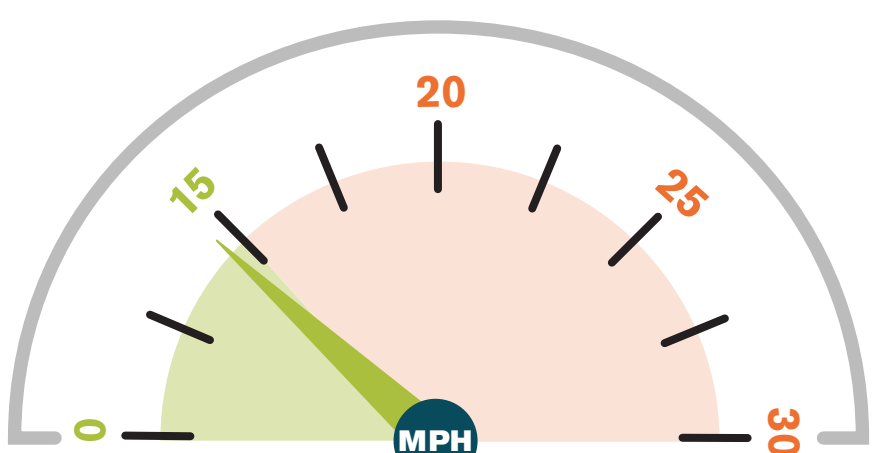


▲ Average speed recorded: 15 MPH

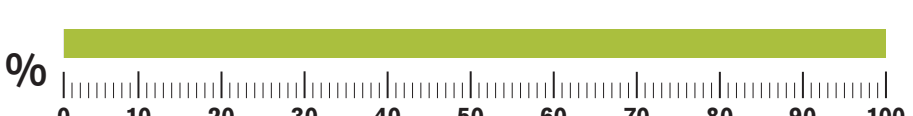


▲ HGVs at/below 15mph: 85%
(No. of HGVs monitored: 61)

January 2023

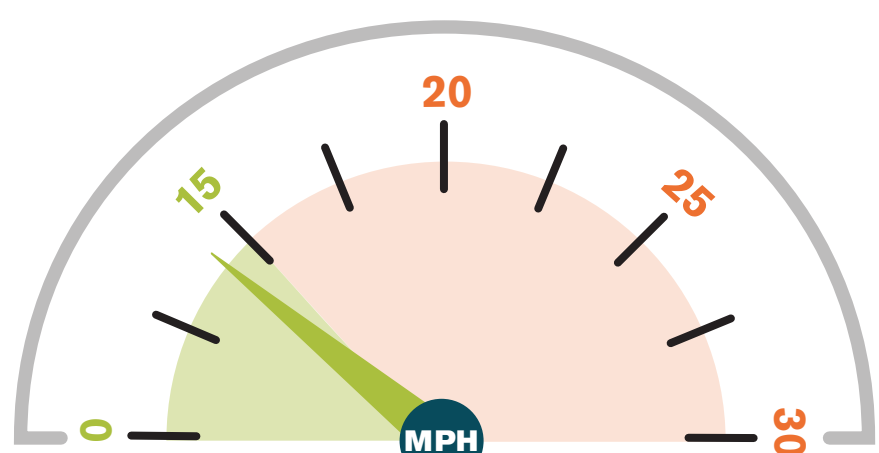


▲ Average speed recorded: 14 MPH

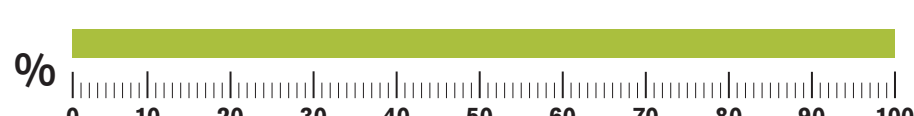


▲ HGVs at/below 15mph: 100%
(No. of HGVs monitored: 104)

December 2022

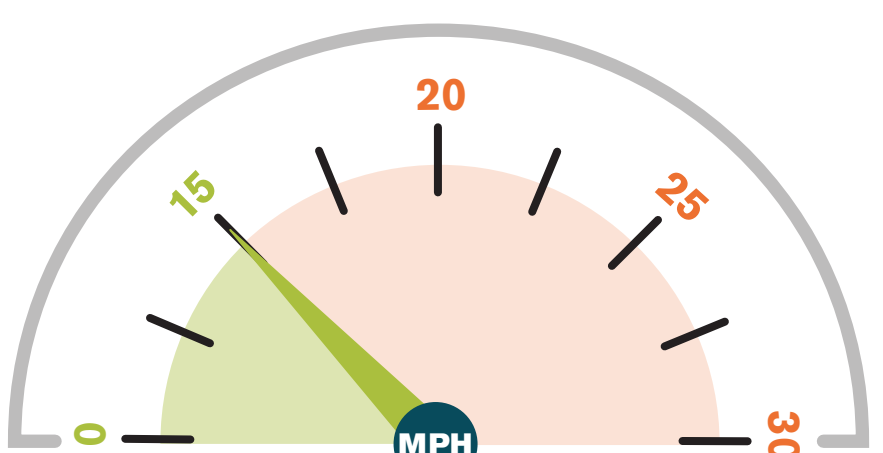


▲ Average speed recorded: 13 MPH



▲ HGVs at/below 15mph: 100%

November 2022

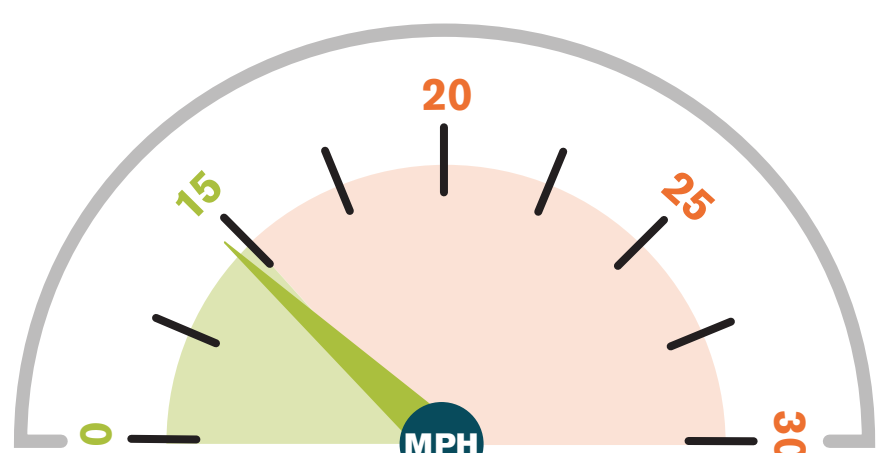


▲ Average speed recorded: 15 MPH



▲ HGVs at/below 15mph: 77%

October 2022



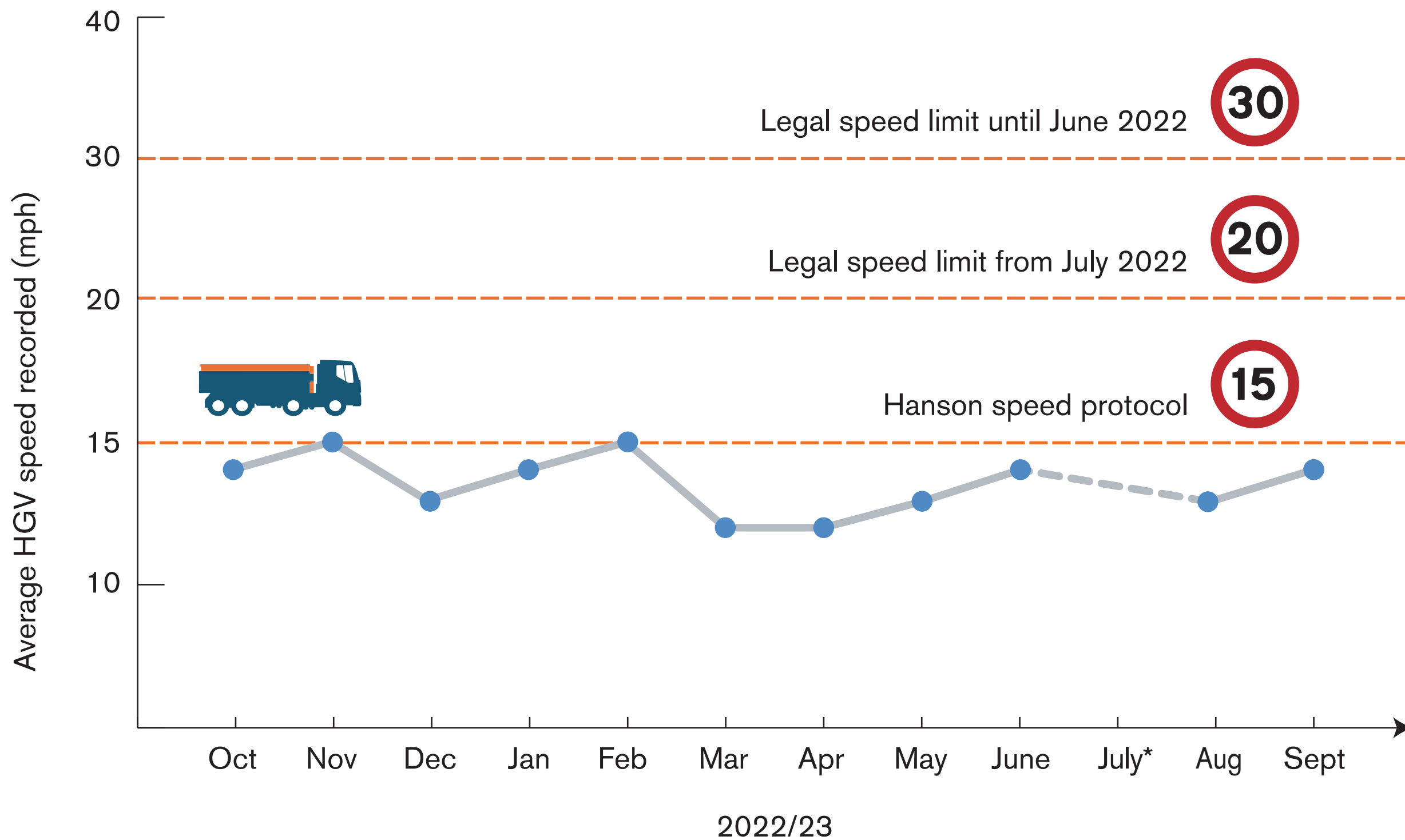
▲ Average speed recorded: 14 MPH



▲ HGVs at/below 15mph: 77%



HGV vehicles average recorded speed



*Data unavailable