

Revised scheme of working

We propose to extract 2 million tonnes of limestone a year from Westdown quarry.

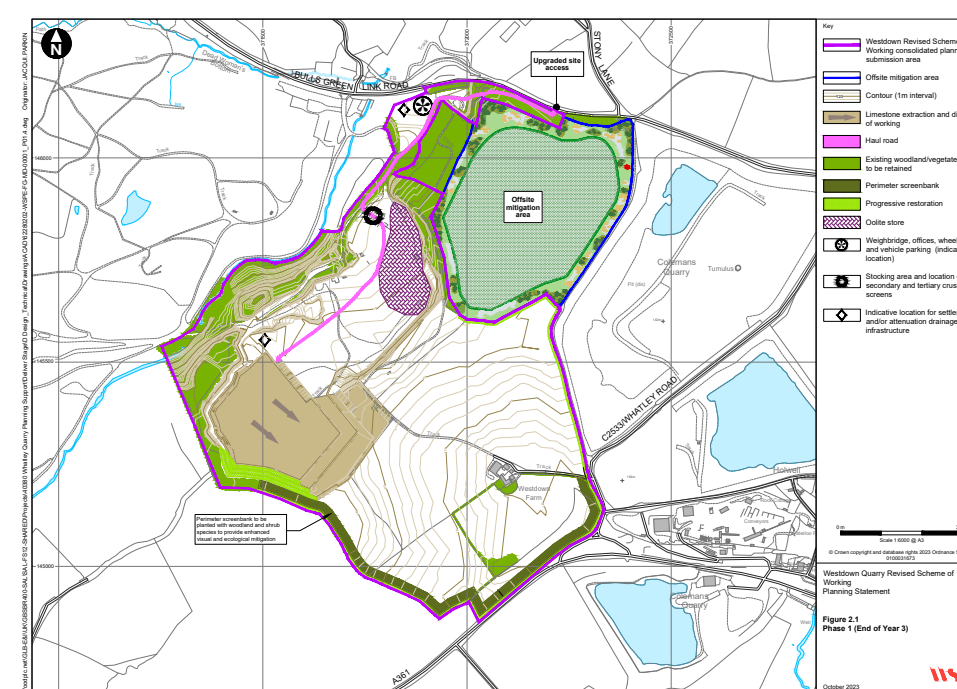
Extraction will start in the south-west corner of the site and progress in an anti-clockwise direction across five separate phases.

The quarried material will be processed on site first by a mobile primary crusher and then by secondary fixed plant. It will then be stockpiled before being transported by road for use in local construction projects. As per our original proposals, operations will be supported by a weighbridge, wheel wash and site offices with staff welfare facilities.

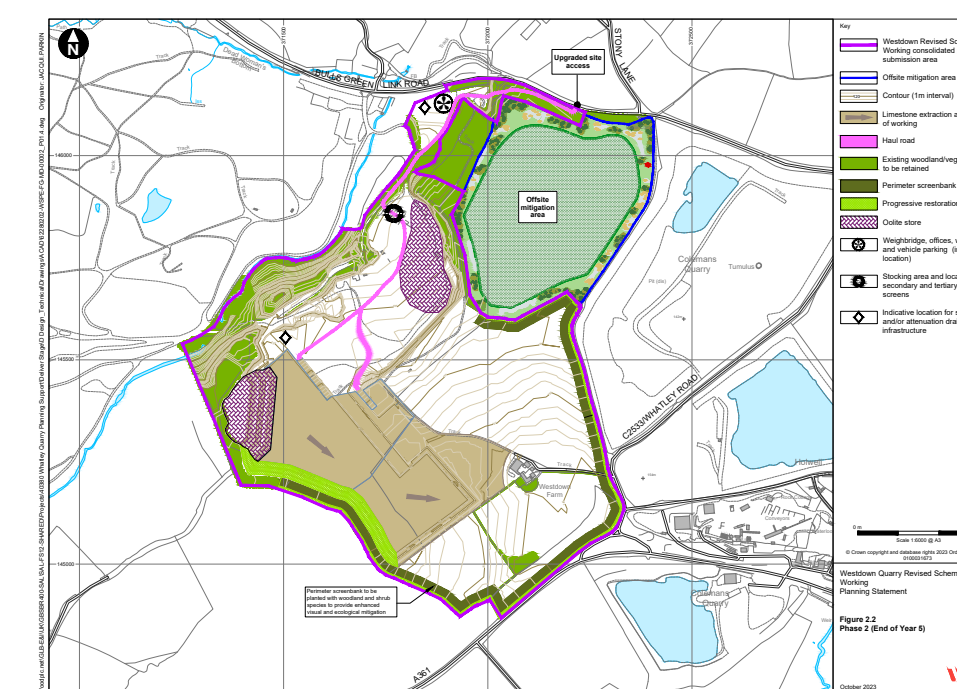
Topsoil and overburden removed in preliminary works will be used to create 3m high screening bunds around the perimeter. Overburden (oolite) and quarry waste generated during production will be stored onsite for use as fill during progressive restoration.

Planned operating hours remain unchanged from our original 2021 application. Operations would take place between 06.00 – 20.00 Monday to Friday and 06.00 – 12.00 on Saturday and Sunday.

Phasing of operations and restoration



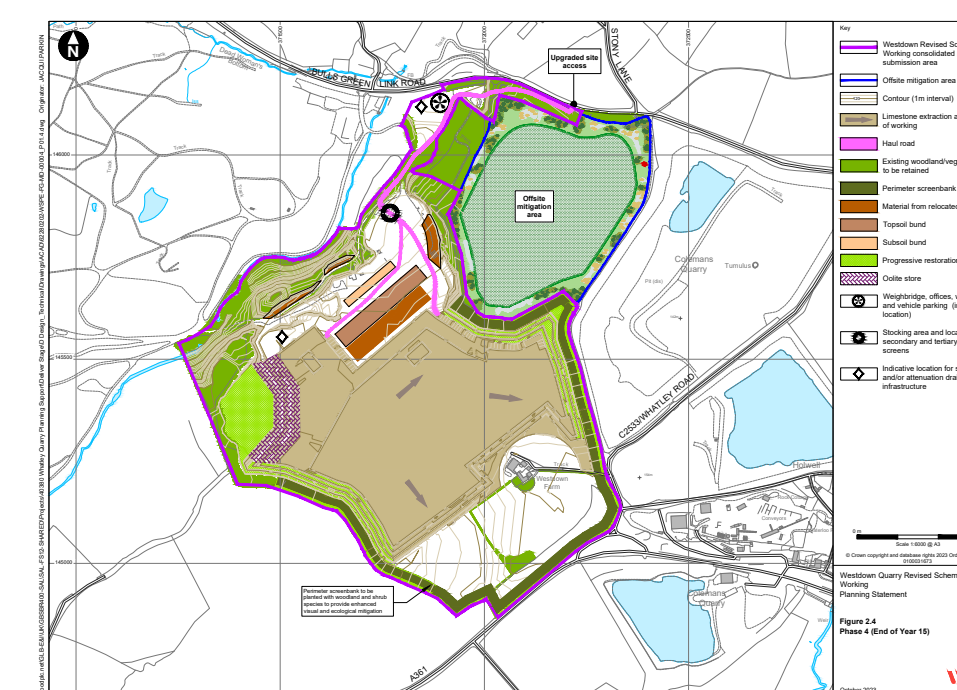
Phase 1: end of year 3



Phase 2: end of year 5



Phase 3: end of year 10



Phase 4: end of year 15



Phase 5: end of year 20



Restoration plan