

## Restoration legacy

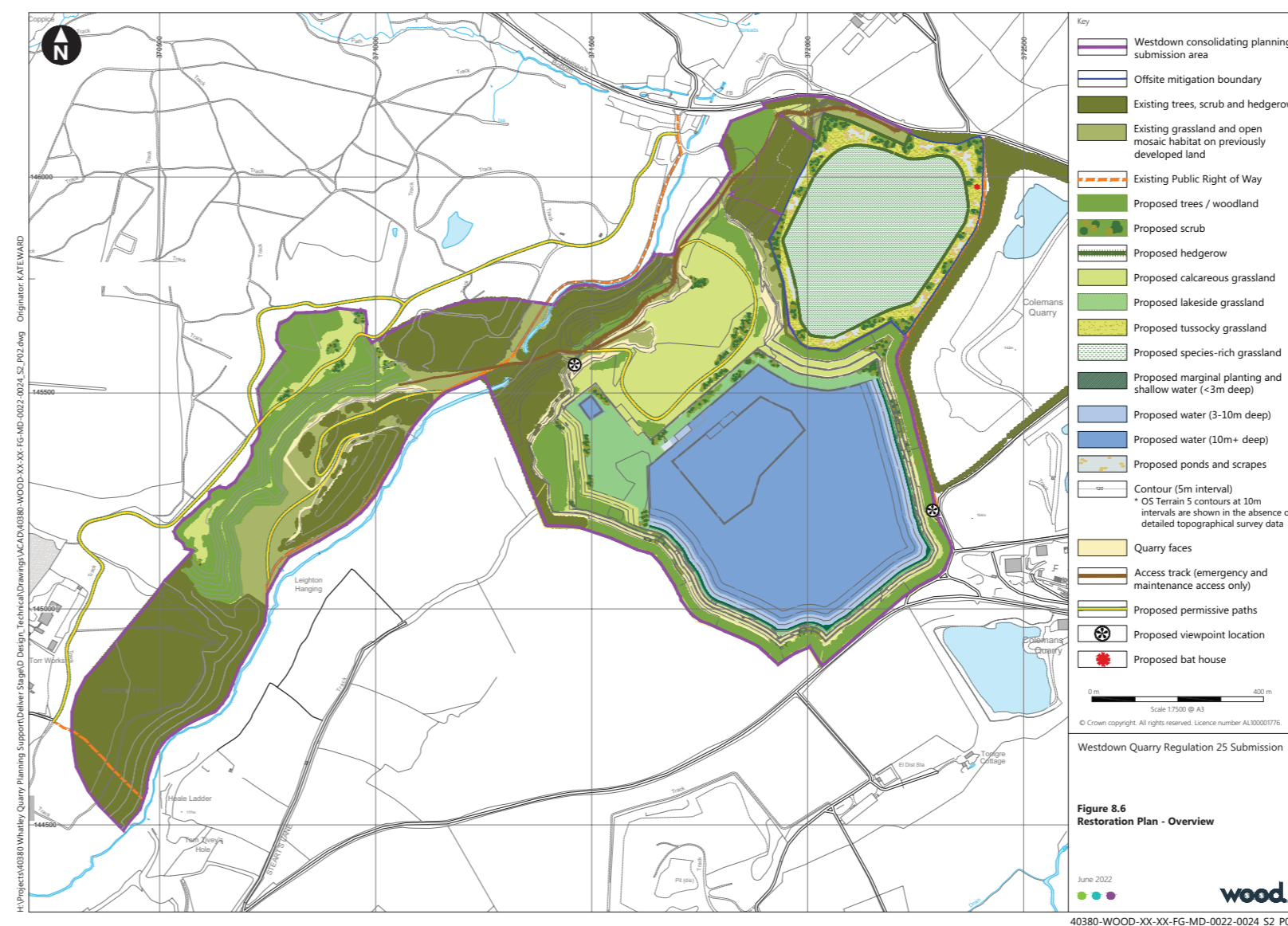
Combined, the progressive restoration of Westdown quarry and the implementation of an appropriate restoration scheme for Asham quarry void could be truly transformative delivering:

- An overall tenfold increase in semi-natural broadleaved woodland habitat
- Enhancement of the area's role as an important habitat for bats and other species
- Opportunity to increase provision of Public Rights of Way.

Our proposed planting scheme includes a wide range of locally-native trees and shrubs such as pendunculate oak, wych elm and hazel, to support local bat and dormice species.

Overall, over 100 acres of new habitat will be created including 33 acres of species rich grassland and more than 20 acres of native woodland, as well as ponds and scrapes integral to bat mitigation.

We're committed to working with stakeholders including Natural England, Somerset County Council, local conservation groups, and neighbouring communities to fulfil the potential this legacy aspect could represent.



▲ Our restoration proposals would provide a lasting legacy with diverse habitats and improved Public Rights of Way



▲ The restoration of Westdown quarry and Asham quarry void would provide a tenfold increase in woodland habitat

