

Business as usual

We want to make the most efficient use of the existing limestone reserves within Tytherington quarry to ensure steady supplies.

That's why we have identified that deepening extraction in the Woodleaze area and working the material underneath the current soil store would enable the most sustainable and efficient use of the quarry's reserves.

Both proposed extension areas fall within Tytherington quarry's existing boundaries, although they were not previously planned for mineral extraction. That's why we need approval from the Mineral Planning Authority – South Gloucestershire Council (SGC) – to vary our existing permissions.

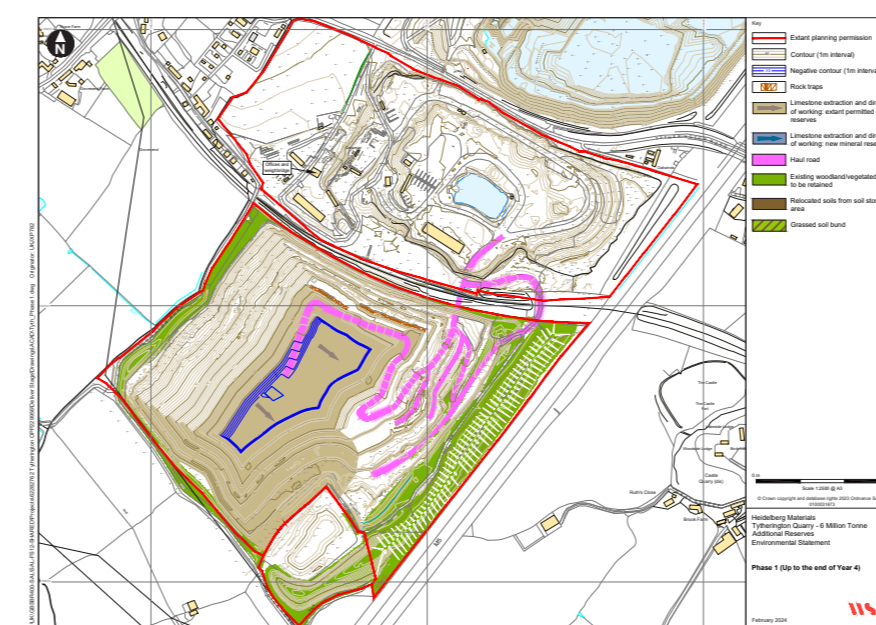
Our neighbours will see little change as a result of these proposals and, for us, it would be business as usual:

- Production levels would remain at current levels.
- Material would continue to be processed by mobile equipment and transported on-site by mobile plant.
- No changes are planned to operating hours or blasting.
- Access into and out of the site will be unchanged.
- The number of HGVs and train movements will also stay at current levels.

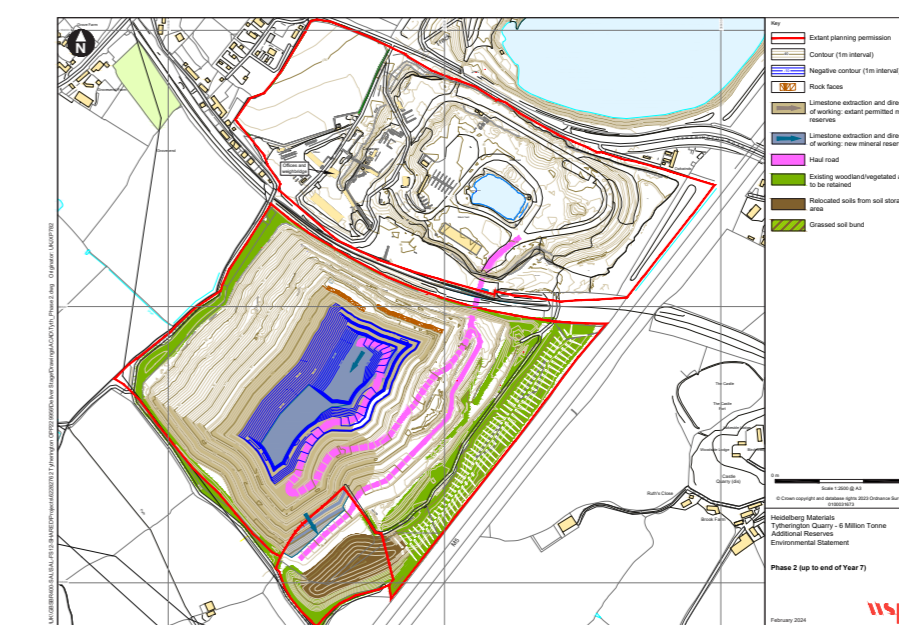
The soil store area:

The soil and overburden removed from the existing store will be stored elsewhere in the quarry for use in future restoration.

In the interim, some will be used to create new screening bunds along the southwestern and southeastern corners of the quarry, as well as in raising the existing bund abutting the plantation situated between the quarry and the M5.



Phase 1



Phase 2



Phase 3



Restoration plan

The Woodleaze area:

Extracting deeper in Woodleaze would see the creation of 3 additional benches.

This would increase the depth of the quarry by 15 metres over current permitted levels.