

**Chipping Sodbury Quarry  
Community Liaison Group Meeting  
18<sup>th</sup> April 2024  
Meeting Room at Chipping Sodbury quarry**

**DRAFT MINUTES**

**ATTENDEES:**

<b>John Ford (JF)</b>	<b>Yate Town Council</b>
<b>Fergal Cummins (FC)</b>	<b>Chipping Sodbury Town Council</b>
<b>Louise Buckle (LB)</b>	<b>Yate Rocks residents' representative</b>
<b>Kirsty Couch (KC)</b>	<b>Autumn Book Management Company</b>
<b>Mike Brown (MB)</b>	<b>Heidelberg Materials UK, Southwest Area Operations Manager</b>
<b>Joe Edwards (JE)</b>	<b>Heidelberg Materials UK, Chipping Sodbury Quarry Unit Manager</b>
<b>Andy Duncan (AD)</b>	<b>Heidelberg Materials UK Principal Landscape Manager (standing in for Alexandra Hemming)</b>
<b>Trystan Mabbitt (TM)</b>	<b>Heidelberg Materials UK Consenting &amp; Development Manager</b>
<b>Samantha Stagg (SS)</b>	<b>James Reed PR</b>
<b>Michelle Beasley (MMB)</b>	<b>Heidelberg Materials UK secretariat</b>

**APOLOGIES AND MEMBERS ABSENT:**

<b>Rob Sims (RS)</b>	<b>Barnhill residents' representative</b>
<b>Neil Higgs (NH)</b>	<b>SGC Environmental Health Officer (EHO)</b>
<b>Richard Ashton (RA)</b>	<b>SGC Community Spaces Improvements Team Manager</b>
<b>Gareth Fielding (GF)</b>	<b>Wickwar Parish Council</b>
<b>Ben Nutland (BN)</b>	<b>SGC Councillor for Yate North ward</b>
<b>John Davis (JD)</b>	<b>SGC Councillor for Yate Central ward</b>
<b>Adrian Rush (AR)</b>	<b>SGC Councillor for Chipping Sodbury and Cotswold Edge ward</b>
<b>Emma Warlock (EW)</b>	<b>The Friends of Ridge Wood</b>
<b>Sarah Sinstead (SS)</b>	<b>Autumn Brook Management Company</b>
<b>Julie Reed (JR)</b>	<b>Yate Rocks residents' representative</b>
<b>Karen Hayes (KH)</b>	<b>South Gloucestershire Council (SGC) Public</b>
<b>Rights of Way (PROW)</b>	
<b>Alexandra Hemming (AH)</b>	<b>Heidelberg Materials UK Senior Landscape Architect</b>

## **Agenda**

- 1. Welcome and introduction – Interim Chair Mike Brown (MB)**
  - Review of minutes from the last meeting
  - Matters arising from the last minutes
  - Review of aims and membership of the group
- 2. Chipping Sodbury Operational Update – Joe Edwards (JE)**
  - Operations and logistics (incl. blasting)
  - Feedback
  - Traffic Management
  - Community Support
- 3. Environmental, landscape and biodiversity update – Andy Duncan (AD)**
- 4. Land and Mineral Planning update – Trystan Mabbitt (TM)**
- 5. Community Update – Joe Edwards (JE)**
- 6. AOBs**
- 7. Date for future meetings**

## MEETING MINUTES

### 1. Welcome and Chair introduction – Mike Brown (MB)

- MB introduced himself and welcomed all attendees to the meeting.
- Attendees introduced themselves and set out which organisations/groups they were representing.
- MB explained that the “draft” minutes from the previous meeting had been distributed to all members of the group as well as being uploaded to the Chipping Sodbury Quarry community page. At this subsequent meeting, the group will be asked if they agree with the content, and if so, “approved minutes” will then be sent to all members and uploaded to the community web page, with amends if any are agreed.
- MB asked if the group was happy with the content of the draft minutes from the previous meeting. All members said they were happy with the content.
- MB went through the actions from the last meeting.
  - MMB to upload “approved” minutes from previous meeting, and draft minutes from this meeting to the Chipping Sodbury Quarry community web page. **Completed**
  - JE to review fencing and signage. **JE speaking with contractor re Barn Hill and Hampstead.**
  - JE to find out who owns the “Danger Quarry” sign next to the church yard. **JE asked if it is still there as he couldn’t recall it. JF advised it was by Waitrose. JE will check and take down.**
  - SS to invite Autumn Brook Management Company. **Completed.**
  - JE to get a list of contacts who would like to be notified of blasting times. **Completed**
  - JE to speak with the council again about the broken carriage way. **JE not yet completed. MB asked JE to out in writing to the council to formalise it.**
  - JE to email members of the group when he has a date for the trees to be felled. **No date yet.**
- MB apologised on behalf of AD who was at another meeting and explained to the group AD’s role.

- MB went through the agenda and explained it was a standard agenda for all liaison meetings.

## 2. Chipping Sodbury Quarry Operational Update – Joe Edwards (JR)

- JE advised the group of production volumes in 2023 and the planned volumes for 2024.
- JE said of work intended this year, level 4 in Brinsham East and level 7 in Hampstead Farm would be opened. Focusing on generating increased volume of clean stone and reducing volumes of bulk fills produced.
- JE said, currently Hampstead Farm is too wet to work.
- MB said there is a lot of water, the highest on record with recent rain.
- JE said Barnhill would be clear by June to prevent the need for operational access.
- JE said he would continue improvements on operational efficiencies.

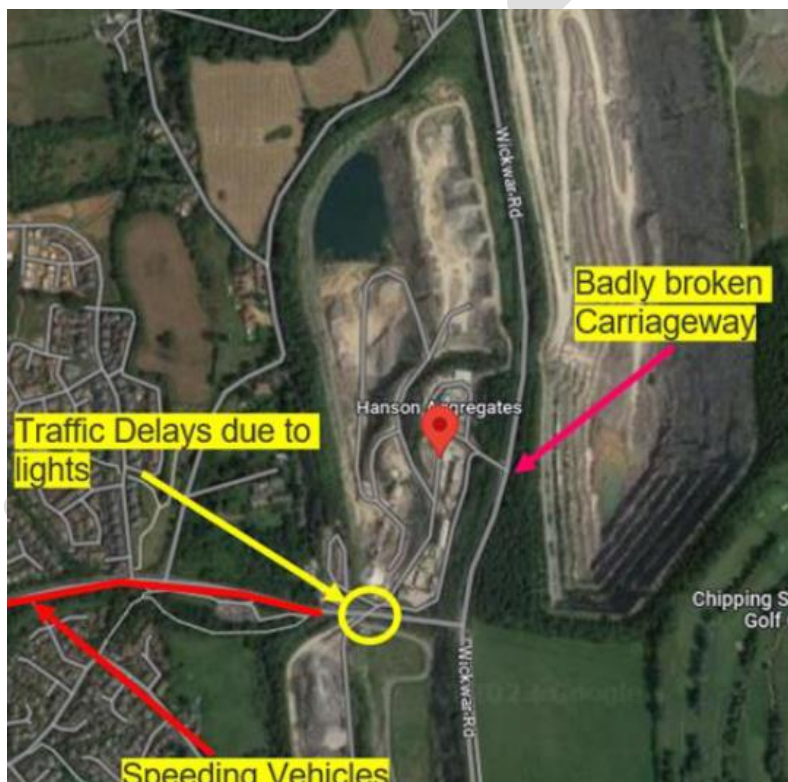
### Blasting

- JE advised there had been 6 blasts this year to date which has provide 300kt of material. (All blasts were at Brinsham East)
- JE said the Maximum Instantaneous Charge (MIC) was 220kg. The maximum Air over Pressure (AOP) was 127db and the highest recorded vibration (measured as Peak Particle Velocity) was 4.77mm/s PPV.
- JE told the group planning permission states that 95% of the blasts must be below 6mm/s. All blasts have been well within this level on this logarithmic scale.
- LB asked why a recent blast was so big and vibration was felt more than usual.
- JE said it was because the blasts are designed to make them safe, and normally they are long straight benches, on this occasion, the safest way was to blast in a “L” shape. This meant the energy had nowhere to go.
- MB said blasting is heavily legislated, and Heidelberg Material do not do it themselves, it is contracted out. Each blast has an “explosive supervisor”. They set the parameters and will discuss with site managers.
- LB asked, regarding Brinsham East being smaller, would more blasts be done in “L” shapes because there are more corners?

- JE said no, it was due to geology, we had to do the “L” shape, but normally we prefer to do an oblong shape, as it throws the rock. The “L” shape doesn’t throw the rock, and tight rock is harder to dig.
- MB said it’s also Air Over Pressure that rattles windows, and not the vibration.
- KC asked if that is what we feel in the house.
- MB confirmed it was AOP that was felt in the house.
- LB said it did help when she had a warning call for time of blasting.

#### Traffic management

- JE advised site access had been changed to allow HGV traffic to enter site via Wickwar Road, reducing traffic around Southfields Way.



- JE said complaints had stopped referencing speeding lorries at Peg Hill.
- KC said does this mean lorry won’t queue on Peg Hill now.
- JE confirmed it has stopped lorries queuing on Peg Hill as they are now using the bottom gate.

## Community

- **JE said £1,000 support had been donated to Chipping Sodbury Festival, allowing organisers to extend planned educational events to more local school children.**
- **MB said Heidelberg Materials have an International Business Centre called “The Ridge” in Chipping Sodbury, which had not yet participated in community events. It has 450 employees, which not many people in the community know about. The MD of the site, Kate, will attend the next liaison meeting as they would like to be more involved with the community. For example, The Ridge currently employs 16-year-olds for work experience on Saturdays, paid at minimum wage, something that should be highlighted to the community.**
- **KC said Autumn Brook has also been involved in projects in the community. In the past it’s been a part of creating an orchard, bug hotels and planted 200 trees as a part of its biodiversity plan. And are always looking for opportunities.**
- **MB advised the group Heidelberg Materials runs the “Quarry Life Awards” (QLA). It is a scientific and educational competition which takes place every three years which runs simultaneously at national and international levels. Its aim is to raise awareness of the ecological value of extraction sites and sharing new best practices.**
- **MB said Heidelberg Materials UK Masters quarry in Wareham, Dorset were winners of the UK Quarry Life Award in 2022. A team of students from Bath Spa University investigated the sand properties required for sand lizards to breed.**
- **SS said QLA were split into two schemes, academic and community. She said the winner from the UK gets entered into the international award. The UK have won on three occasions in the past.**
- **MB said he could put KC in touch with AH, Heidelberg Materials Senior Landscape Architect, to discuss further, KC said it would be great to speak further on the matter as they’d received £2,500 to create an orchard, and had a meeting booked with Forest of Avon Trust for help with what types of trees to plant.**
- **MB said AH and AD are experts and will be able to advise on how to develop a community proposal for the QLA Awards. He said for example, Heidelberg Materials had just supplied material to create the new Alveston pump track and was able to supply wildflowers for the banks surrounding its own stocks.**
- **JE said Chipping Sodbury Quarry had its first school visit recently.**

- **MB said Heidelberg Materials want to engage with schools and build relationships to encourage students to apply for future roles, like apprenticeships, graduates, and higher apprenticeships. He said the Tytherington quarry had just employed a higher apprentice and in the southwest area, three higher apprentices had been employed from local schools.**
- **JF asked how people would apply.**
- **MB said job can be applied for through the Heidelberg Materials careers web page. (address below), but we'd really like to engage with schools by attending their careers fairs.**  
<https://www.careers.heidelbergmaterials.co.uk/en>
- **MB said the relationship between Kings of Wessex school and our Batts Combe quarry in Cheddar has been a great success. The careers advisor at the school recommended a student, who she thought would be a great fit for the higher apprentice scheme, and since the student has applied for the role and progressed through selection to be appointed.**
- **LB asked how the roles are advertised.**
- **MB said on the Heidelberg Materials careers web page and on Indeed.**
- **FC asked which schools are on board so far, as he was sure Chipping Sodbury School would be interested.**
- **MB said Heidelberg Materials had been unsuccessful in developing direct contact with any school in the area and asked FC to pass on details.**
- **TM said Heidelberg Materials was developing an alert service for blasting, where those who are signed up for it will get an email / text notification. He said the free service includes a weekly update, setting out the planned blast times for the week ahead, plus a follow up notification approximately an hour before each blast takes place.**
- **TM said it will allow us to share reports. If we get something wrong, we will tell you. It will help alleviate your concerns and we can share data with the EA.**
- **TM said it is already in place at Heidelberg Materials Whatley quarry, with Tytherington quarry and Chipping Sodbury quarry next on the list to go live.**
- **MB said Heidelberg Materials have 55 operations in the UK that use blasting and use three specialist contractors for all 55 sites.**
- **SS said those that signed up at Whatley quarry get a text on Monday to advise when the blast will be, then another 30 minutes before the blast. Whatley blast three times a week and the service has really helped.**

- **LB asked when it will launch for Chipping Sodbury quarry.**
  - **MB said it's imminent.**
  - **FC asked if there was a catchment area.**
  - **SS said that although the scheme is promoted for those living close to the quarry, Heidelberg Materials have never refused anyone to sign up if they are outside the catchment area. The public use bridal ways etc around the quarry, so we can understand that non-residents may be interested in receiving the information. If someone signs up, they get notified.**
  - **FC asked if they must register on-line.**
  - **SS said yes, they can apply on-line which will explain the Heidelberg Materials privacy policy and how their details are kept. Access will be highlighted via a number of means including, promoting it in the local press.**
  - **MB said the Chipping Sodbury quarry email address would be published in these minutes. (see below).  
[chippingsodburyquarry@uk.heidelbergmaterials.com](mailto:chippingsodburyquarry@uk.heidelbergmaterials.com)**
  - **SS said the alert system is currently only working with text messages, but in the future, there will be an option for email.**
3. **Environmental, landscape and biodiversity update – Andy Duncan (AD)**
- **JE started to advise on this section as AD had not arrived due to other commitments.**
  - **JE said the last 18 months had been the wettest period ever recorded.**
  - **JE said work on Brinsham stream debris clearance has started, responding to contact from a Maple Ridge Lane resident.**



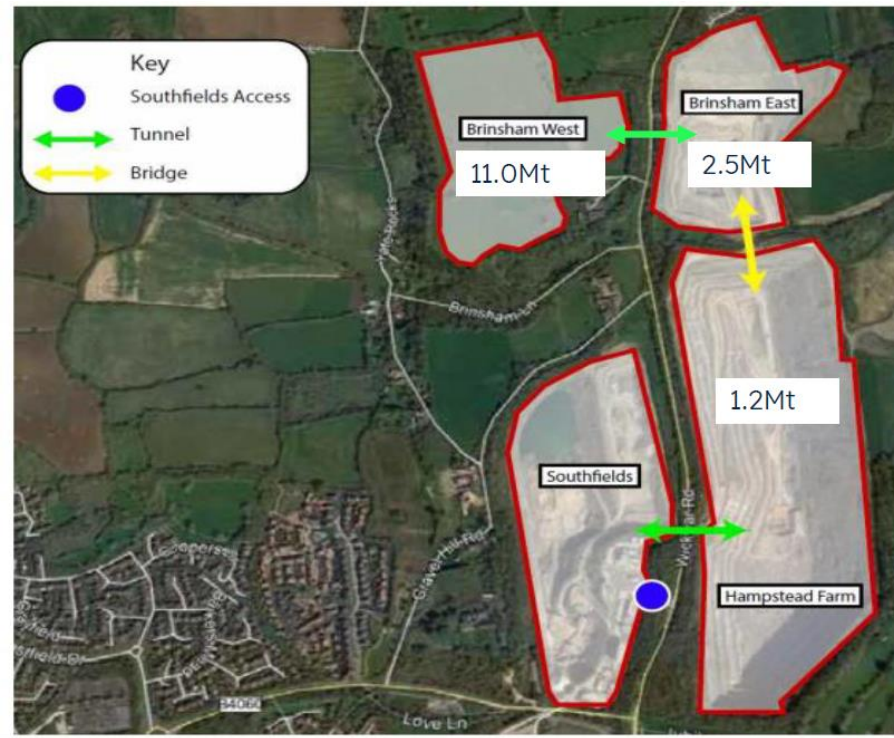


- **JE said reference the hazardous tree management, AH had been liaising with consultants who carried out the tree survey and contractors. The aim is to schedule work outside of bird nesting season, however, if critical trees need to be felled during this time, the work will be overseen by someone with the relevant competence.**
- **JE said he had not received dates from the contractors yet.**
- **JF said a tree had come down on the path that leads to the stockpile, the footpath down to The Ridge.**
- **JE said he would get it sorted.**
- **TM said he had recently discussed flooding with a landowner as he'd experienced a lot a lot recently, has anyone else seen an increase in flooding?**
- **LB said its not out of control, it comes and goes. The issue is the hill at the top of Yate Rocks. If comes down and falls into properties. It's the sheer volume that's the issue. What is the added risk for putting in your plans.**
- **TM said this will form part of the meeting with the planner, geologists, and hydrologists, who will be looking deep into it.**
- **LB said with the loss of trees and shrubs, it will mean debris will come down with the water.**
- **JE said the tree stumps will still be there.**
- **JE said the Hydroseeding of the bank by the offices is now complete and starting to germinate. Strimming and spraying around new trees to encourage growth.**
- **AD joined the meeting.**
- **AD said great crested newt surveys of the ponds associated with the Hampstead tip development are now underway. He said results from two nights of monitoring saw a strong medium population, which is what it was before the development of the tip took place and illustrates that our mitigation through planting and pond creation has been successful.**

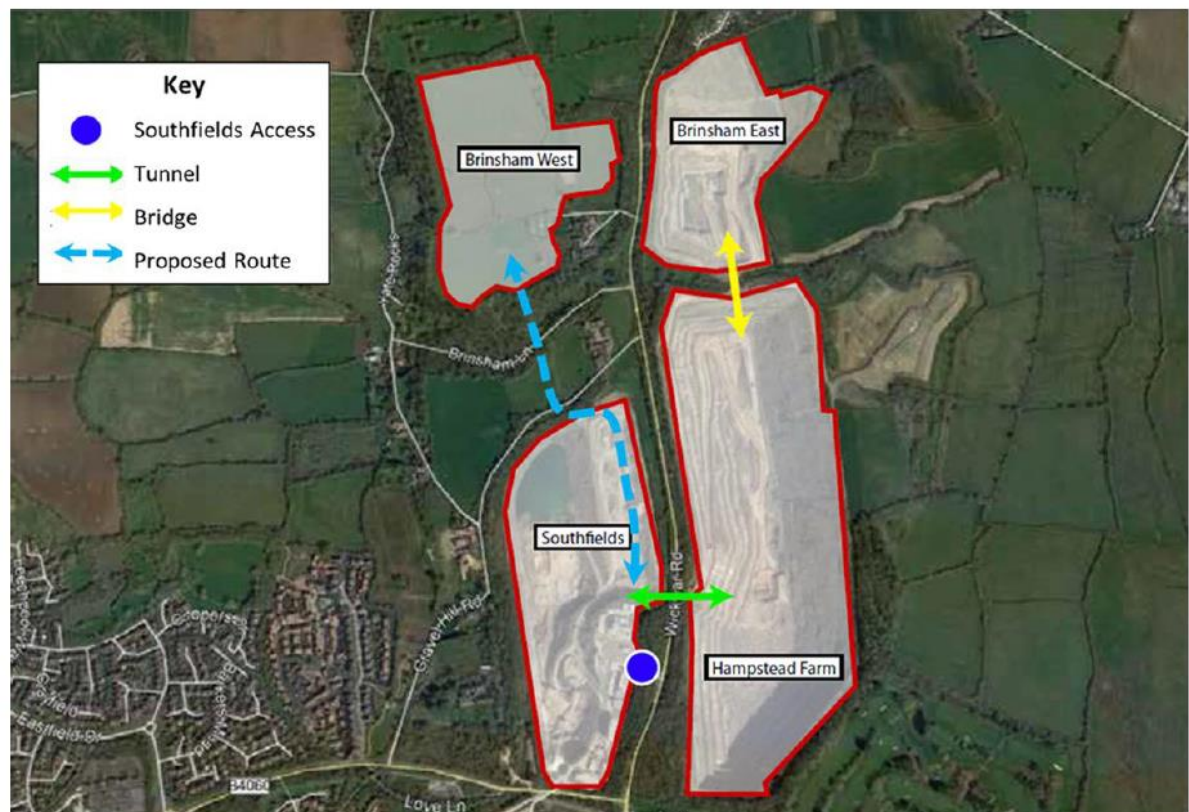


- **AD said the newt licence lasts 20 years and monitoring is in place.**
  - **LB asked when the new planting is going to happen in Brinsham West, as it seems sparse.**
  - **AD said it was originally planted in 1990-1992 as a screen plantation. It was originally planted at dense spacings for quicker screening effect. All screenbelt planting was implemented as agreed in discussions with Avon County Council, as it was at the time.**
  - **Ad said the plantation has been thinned which will promote more growth and a better shrub layer. Further hedge laying next to the plantation along the Wickwar Road has also been carried out to improve the hedge thickness. That's a program from the whole of Wickwar Road. He said when we come to extract Brinsham West, soil stores will be built adjacent to the plantations which will offer further screening benefits.**
  - **MB said AH can go through ecology in more detail at the next meeting.**
  - **LB asked what is done with the waste wood.**
  - **AD said brush is left for deadwood habitat and some gets taken away for firewood etc.**
- 4. Land and Mineral Planning update – Trystan Mabbitt (TM)**
- **TM said the current permitted scheme was to work in Brinsham east, with some in Hampstead when water permits. He said the current planning for Brinsham West would allow for 11 million tonnes to be extracted, with a tunnel and haul road.**
  - **TM recapped on the planning application for the propose temporary haul road. Map of proposed scheme below.**

**Permitted scheme.**



**Proposed temporary haul road.**



- **TM said Heidelberg Materials UK was continuing to progress the Brinsham West Application (blue dash line is the proposed route). He said when it was first submitted, the haul road was proposed to be a 2-way road, to allow two dumper trucks to use the route at any one time. However, this has since been amended to a single-track road with passing bays to allow a smaller footprint and respond to feedback as part of the scheme.**
- **TM said the proposed scheme would see a temporary haul route from Southfield, crossing Gravel Hill road and Brinsham Lane.**
- **FC asked if the temporary haul road was going to go through Wickwar Road.**
- **TM advised that the previously consented scheme was for a conveyor to go under Wickwar Road.**
- **FC said he was aware of the new plans and asked if they had been refused.**
- **TM said it hadn't been refused, but some objections from residents were raised, and the plan is to resubmit a revised scheme soon. Local residents and the liaison group will be kept informed.**
- **FC asked if an open session had been done.**
- **TM said that the company had consulted with the liaison group prior to submitting the initial application.**
- **LB said it was not very well attended.**
- **SS said the process started during Covid restrictions.**
- **TM said we have also had two round table events and an informal one. Ten to fifteen people from Yate Rocks attended, and feedback received has helped shape some of the changes we've made.**
- **LB asked if the cluster of trees in the photo, were going to be where the new quarry is located.**
- **TM said not all of the trees, the mature trees will be left as part of the landscape.**
- **LB said she would like to see the route in, and where the tree line will end.**
- **TM said we will be able to show visualisations as part of the future planning process.**
- **FC asked if the bottom of the map was Southfield.**
- **TM confirmed it was.**

- **TM said there would be vegetation including trees and scrubs planted along the proposed haul road to provide additional screening.**
- **LB said, so there will be no bunding on the west side of the road.**
- **TM confirmed they wouldn't be.**
- **AD said this is because the haul road will be sited in a natural valley, which is not visible from the west, and only visible from the road in the east.**
- **LB said do you have an image going the other way, into Yate Rocks. I'd like to understand the site line of the junction. This was a concern.**
- **TM said a traffic light system will be in place. By reducing the width of the haul road to single track, it has alleviated concerns.**
- **MB said if we are successful, we'll be open and share every phase.**
- **AD said we will have a design for entering in Brinsham West.**
- **LB said if you are cutting the west side, the noise is going to come through as all the trees will be gone.**
- **AD said that the section referred to by LB would stay.**
- **LB said we will hear it, as we hear the shooting range. Noise travels weirdly around the valley. There was a festival in the farm and all the residents complained except for one.**
- **AD said the valley does curve.**
- **TM asked if it is the noise of truck movements that is the concern.**
- **LB said yes, we came to see the crusher and the trucks were much noisier.**
- **TM said the current approved scheme includes the operation of a primary crusher.**
- **AD said the haul road would negate the need for an onsite primary crusher and associated noise.**
- **LB said the primary crusher would only be for a couple of years, then it will be lower and won't see it.**
- **MB said Heidelberg Materials use professional noise consultants.**
- **FC said the council said the numbers don't add up for the technical figures for noise.**
- **MB asked TM to check the numbers reference the noise.**

- **LB asked if electric trucks had been considered, to reduce noise.**
- **MB said the type of dump truck we use are not yet available, only 200-300 tonne dump trucks that recharge through hyper power lines. We will look at electric loading shovels but charging capability is an issue at present.**

**Aerial map showing location of proposed temporary haul road.**



#### **Proposed haul road benefits**

- **TM said the haul road will halve the distance across the quarry. Equivalent of saving 500,000km plus travelled during the life of the quarry.**
- **TM said a full carbon emissions comparison indicates that there will be at least 30% overall reduction in carbon savings compared to the consented conveyor tunnel and that of the proposed haul road.**
- **TM said it would also mean a reduction in plant and infrastructure for example, Primary Crusher/Dumper trucks/Tunnel/Conveyor/Haul Road.**
- **TM added that the company had considered locating the haul road on the other side of Wickwar Road, but this would prevent the early restoration of Brinsham East.**
- **MB said every option is reviewed and challenged internally but the fundamental basis is that losing the mineral is not an option.**
- **LB said there is an ongoing issue at the edge of the land with littering and fly tipping, is there a plan to deal with this.**
- **JE said it was the first he had heard of the issue.**

- **MB asked LB if she could send details to JE so he can look at it.**

**5. AOBs**

- **TM asked the group if the timing of the meeting should be changed to increase attendance.**
- **JE said historically this meeting was held at lunchtime.**
- **MB suggested SS write to membership group to request the best time for them to attend.**
- **FC mentioned the traffic lights aren't working.**
- **JF said the traffic lights intermittently do not work.**
- **FC asked who was responsible for them.**
- **JE said South Gloucestershire Council are responsible for the traffic lights, which are not fit for purpose. He said he would like them to be controlled by a remote control, and we'll take control of them.**
- **MB said having a name of someone to talk to about it would be great.**
- **FC said he would find out a contact.**
- **LB asked if there were any complaints about parking at the pedestrian crossing at the top of Wickwar Road, which had become an issue.**
- **KC said there was nothing from Autumn Brook.**
- **TM said for neighbourhood schemes, they can be reported via the council website.**
- **MB said he would see if he can get the local police involved in attending the group.**
- **JE said local officers had been invited to this meeting, but not had a response.**
- **FC said he knows one of the local police officers so will speak with them.**
- **KC said the cars at the junction of Autumn Brook and Peg Hill are not illegally parked. They are waiting for funding to paint yellow lines, in the meantime they have painted white lines to prevent parking, but they do not seem to be working. It's just on the corner as you come out of Peg Hill.**
- **MB asked how long the lines are.**
- **KC said about one hundred yards.**

- **MB said if it's just about getting a contractor to paint lines, it's something Heidelberg Materials could possibly help with. For example, our Batts Combe quarry in Cheddar financed some speed signs, but council approval would be required.**
- **FC said there is also the cost of planning to consider.**
- **KC said she would find the details and pass them on.**
- **MB said Heidelberg Materials UK has concrete, aggregates, asphalt, and a contracting department. He said if you can provide details, I will investigate it. I can't promise, but if it is funding issue and not a planning issue, we could possibly help.**
- **FC said can I just clarify that if this is just a funding issue and not a planning issue, you would be willing to put the yellow lines down.**
- **MB said I can't promise we can, but I will definitely look into it. He asked MMB to add the Chipping Sodbury quarry community funding request link in the minutes. (see below)**  
[www.communities.heidelbergmaterials.co.uk/en/community-donations](http://www.communities.heidelbergmaterials.co.uk/en/community-donations)
- **SS explained Heidelberg Materials has set criteria for the projects it supports, and its approach is to prioritise support for initiatives promoting -**
  - **Education, skills, and wellbeing**
  - **Protecting/enhancing the environment**
  - **Supporting biodiversity and sustainability**
  - **Promoting the community and heritage of the area**
  - **Community within a 3-mile radius of the quarry**
- **MB said Heidelberg Materials receive a lot of requests for financial and material donations, which are discussed at an internal monthly community meeting with each site.**
- **MB advised the next meeting would be 11<sup>th</sup> July 2024 at 17:00, and if there was no other business to discuss, he thanked everyone for attending and declared the meeting as now closed.**

### **Summary of Actions**

- **JE to write to the council about the broken carriage way.**
- **JE to email members when he has a date for the trees to be felled.**
- **AH to get in touch with KC reference biodiversity and planting trees.**
- **FC to pass contact details of careers at Chipping Sodbury school to MB.**
- **JE to sort out the tree that's come down on the footpath to The Ridge.**
- **AH to explain ecology reference the new planting at Brinsham West.**
- **TM to check the noise data is correct.**
- **LB to send JE details of littering and fly tipping at edge of land.**



- **SS to write to members to ask if there is a preferred time, they could attend this meeting.**
- **FC to find out who at South Gloucester Council to speak to about the traffic lights.**
- **FC to speak with local police force to see if he can get someone to attend meeting.**
- **KC to give details of the yellow lines to MB to see if Heidelberg Materials can help.**
- **MMB to add approved minutes from the last meeting to the community web page, and the draft minutes from this meeting.**

**Proposed dates for next meeting**

**Thursday 11<sup>th</sup> July 2024 at 17:00**

**Thursday 10<sup>th</sup> October 2024 at 17:00**

**Thursday 9<sup>th</sup> January 2025 at 17:00**

**Thursday 10<sup>th</sup> April 2025 at 17:00**

**[ENDS]**