





Heidelberg Materials,
Ribblesdale
Air Quality Stations
December 2024 Data
Summary
28 Jan 2025



Quality Management

Job No	EMT10022		
Project	Heidelberg Materials, Ribblesdale Air Quality Stations		
Location	Newcastle Office		
Title	Ribblesdale AQS Data Summary – December 2024		
Prepared for	Heidelberg Materials UK		
Document Ref	EMT10022_ December 2024_Rev0	Issue / Revision	001
Date	28 Jan 2025		
Prepared by	Stephen Wigham <i>Principal Consultant</i>	Signature (for file)	
Checked by	Jeff Hood <i>Senior Consultant</i>	Signature (for file)	

Revision Status / History

Rev	Date	Issue / Purpose/ Comment	Prepared	Authorised
Rev0	28/01/25	First issue	SW	JH

Contents

1. Introduction	2
1.1 Site description	2
2. Standards and Guidance	3
3. Data Summary	6
3.1 Chatburn AQS-1	6
3.2 Clitheroe AQS-2	14

Figures

Figure 1	Air Quality Stations	2
----------	----------------------	---

Tables

Table 1	UK Air Quality Objectives for protection of human health, July 2007	3
---------	---	---

1. Introduction

Element Materials Technology were commissioned by Heidelberg Materials UK, Ribblesdale to maintain the Air Quality Stations (AQS) located in Chatburn and Clitheroe. Both AQS use the Turnkey Instruments' Osiris and iGas analysers to provide real-time particulate, gas concentrations and meteorological data, at the AQS sites identified in **Figure 1**. The AQS is permanently connected to the AirQWeb system and provides an online portal to view current and historical data, and 24/7 alarm trigger function to alert any exceedence of the relevant air quality standards.

The December 2024 air quality data summary from the Chatburn and Clitheroe AQS are summarised below.

1.1 Site description

The Chatburn AQS (AQS-1) is situated within Chatburn village on Ribblesdale View. The monitoring location is situated northeast of the Heidelberg Materials, Ribblesdale cement site and quarry.

The Clitheroe AQS (AQS-2) is situated on Butts Grove, in Clitheroe. The monitoring location is situated southwest of the Heidelberg Materials, Ribblesdale cement site and quarry.

Figure 1 Air Quality Stations



2. Standards and Guidance

The objectives adopted in England for the purpose of Local Air Quality Management are set out in The Air Quality Strategy for England, Scotland, Wales & Northern Ireland (DEFRA, 2000), as amended 2003. Similar targets are set at EU level, where there are called limit or target values. These are set out in the European 2008 Ambient Air Quality Directive (2008/50/EC).

A summary of the current UK Air Quality Objectives is provided in **Table 1**.

Table 1 UK Air Quality Objectives for protection of human health, July 2007

Pollutant	Air Quality Objective		To be achieved by
	Concentration	Measured as	
Benzene			
All authorities	16.25 µg m ⁻³	Running annual mean	31 December 2003
England and Wales Only	5.00 µg m ⁻³	Annual mean	31 December 2010
Scotland and N. Ireland	3.25 µg m ⁻³	Running annual mean	31 December 2010
1,3-Butadiene			
All authorities	2.25 µg m ⁻³	Running annual mean	31 December 2003
Carbon Monoxide			
England, Wales and N. Ireland	10.0 mg m ⁻³	Maximum daily running 8-hour mean	31 December 2003
Scotland Only	10.0 mg m ⁻³	Running 8-hour mean	31 December 2003
Lead			
All authorities	0.5 µg m ⁻³	Annual mean	31 December 2004
	0.25 µg m ⁻³	Annual mean	31 December 2008
Nitrogen Dioxide			

Pollutant	Air Quality Objective		To be achieved by
	Concentration	Measured as	
All authorities	200 $\mu\text{g m}^{-3}$ not to be exceeded more than 18 times a year (99.79 th percentile)	1-hour mean	31 December 2005
	40 $\mu\text{g m}^{-3}$	Annual mean	31 December 2005
Particles (PM₁₀) (gravimetric)			
All authorities	50 $\mu\text{g m}^{-3}$, not to be exceeded more than 35 times a year (90.41 th percentile)	24 hour running mean	31 December 2004
	40 $\mu\text{g m}^{-3}$	Annual mean	31 December 2004
Scotland Only	50 $\mu\text{g m}^{-3}$, not to be exceeded more than 7 times a year (98.08 th percentile)	24 hour running mean	31 December 2010
	18 $\mu\text{g m}^{-3}$	Annual mean	31 December 2010
Particles (PM_{2.5}) (gravimetric) *			
All authorities	25 $\mu\text{g m}^{-3}$ (target)	Annual mean	2020
	15% cut in urban background exposure	Annual mean	2010 - 2020
Scotland Only	12 $\mu\text{g m}^{-3}$ (limit)	Annual mean	2010
Sulphur dioxide			
All authorities	350 $\mu\text{g m}^{-3}$, not to be exceeded more than 24 times a year (99.73 th percentile)	1-hour mean	31 December 2004
	125 $\mu\text{g m}^{-3}$, not to be exceeded more than 3 times a year (99.18 th percentile)	24-hour mean	31 December 2004
	266 $\mu\text{g m}^{-3}$, not to be exceeded more than 35 times a year (99.90 th percentile)	15-minute mean	31 December 2005
PAH *			

Pollutant	Air Quality Objective		To be achieved by
	Concentration	Measured as	
All authorities	0.25 ng m ⁻³	Annual mean	31 December 2010
Ozone *			
All authorities	100 µg m ⁻³ not to be exceeded more than 10 times a year	8 hourly running or hourly mean*	31 December 2005

**Not included in regulations at present*

Pollutant	Air Quality Objective		To be achieved by
	Concentration	Measured as	
Nitrogen dioxide (for protection of vegetation & ecosystems) *			
All ecosystems	30 µg m ⁻³	Annual mean	31 December 2000
Sulphur dioxide (for protection of vegetation & ecosystems) *			
All ecosystems	20 µg m ⁻³	Annual mean	31
	20 µg m ⁻³	Winter Average (Oct - Mar)	December 2000
Ozone *			
All ecosystems	18 µg m ⁻³	AOT40 ⁺ , calculated from 1h values May-July. Mean of 5 years, starting 2010	01 January 2010

**not included in regulations at present*

**AOT 40 is the sum of the differences between hourly concentrations greater than 80 µg m⁻³ (=40ppb) and 80 µg m⁻³, over a given period using only the 1-hour averages measured between 08:00 and 20:00 hours.*

3. Data Summary

3.1 Chatburn AQS-1

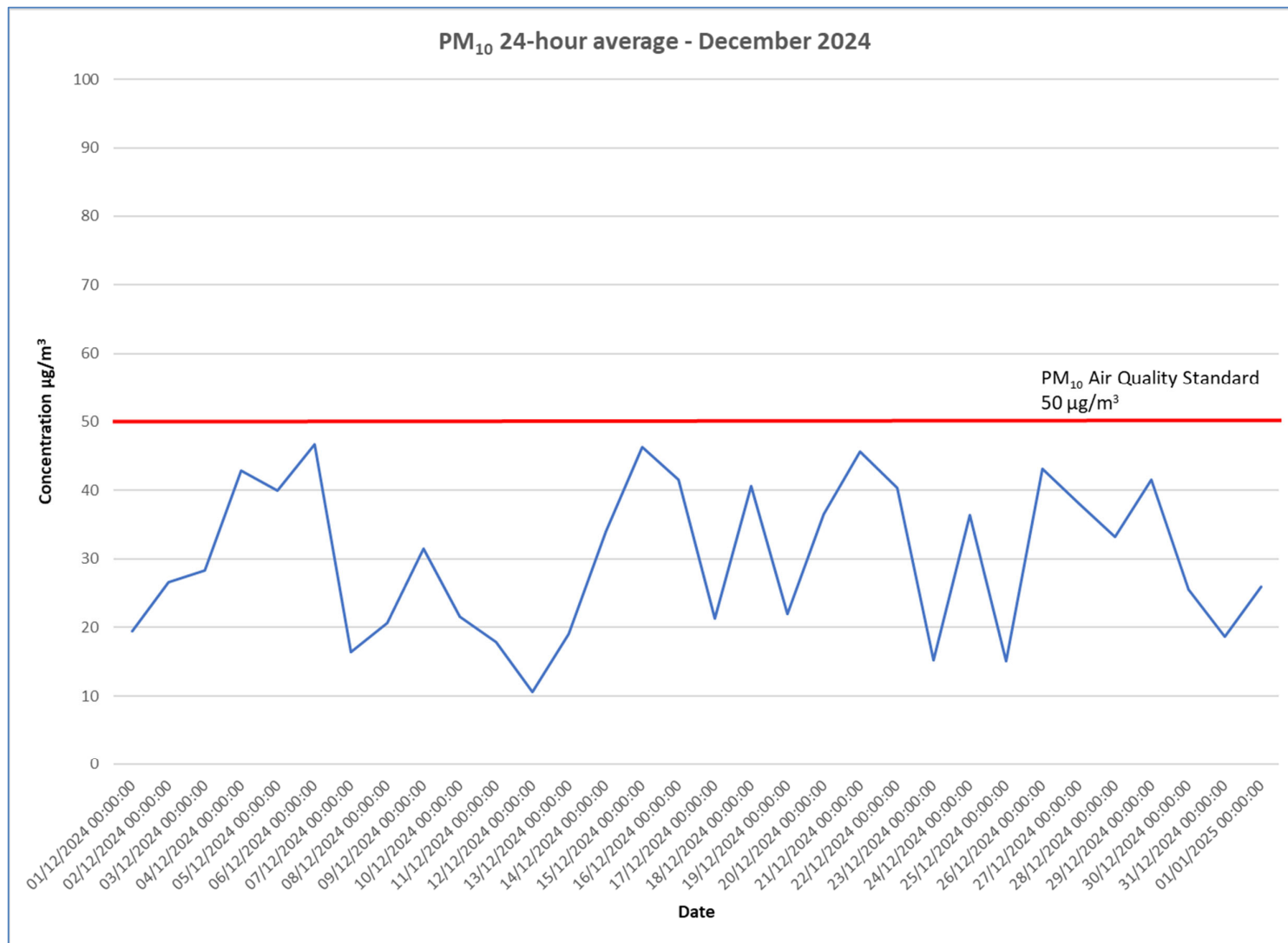
3.1.1 *Osiris particulate data*

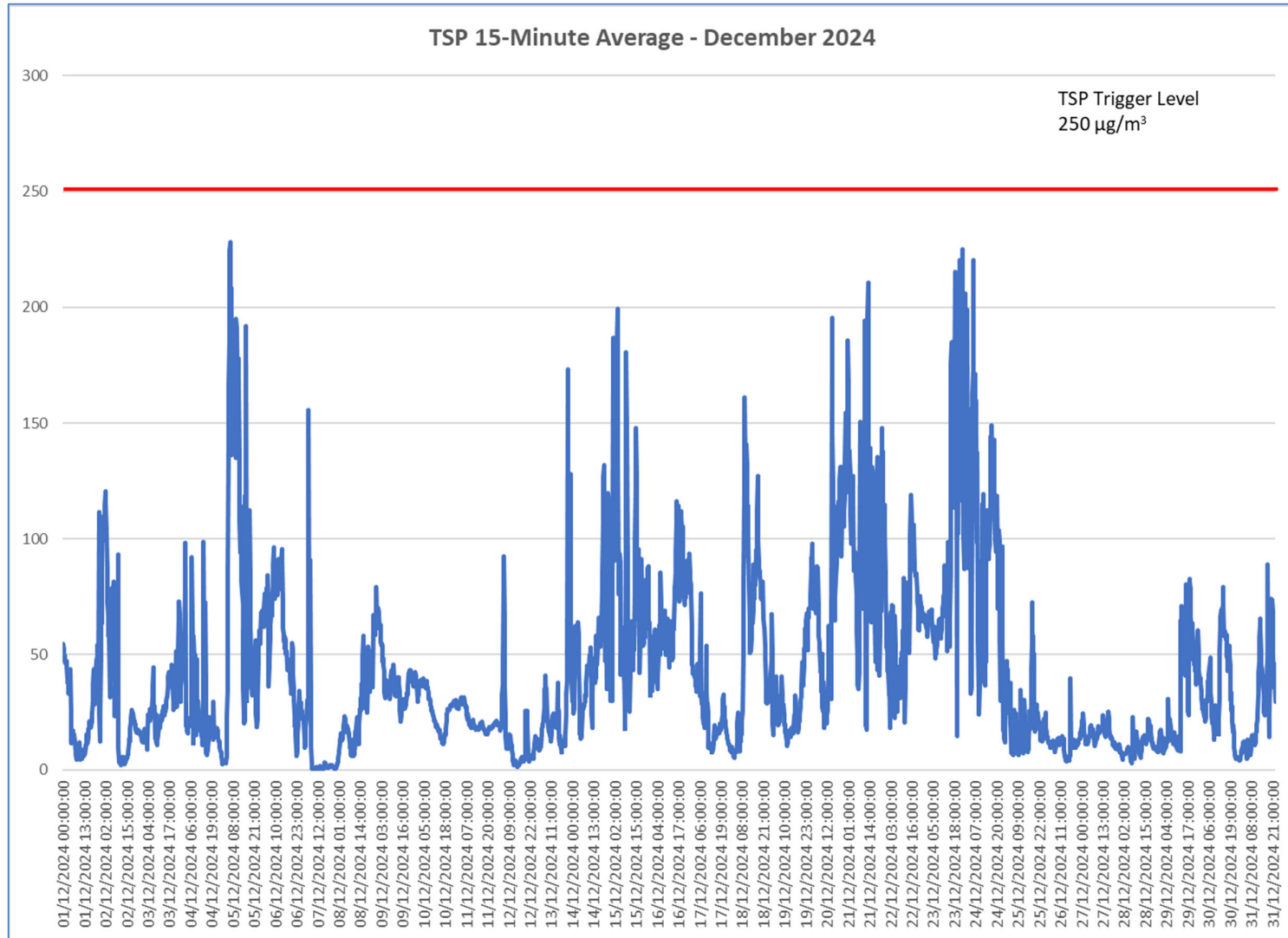
Based upon the current UK air quality guidance, the following relevant alarm trigger levels are active on the Osiris analyser and data are presented below:

- PM₁₀ 50 µg/m³ over a 24-hour period; and
- TSP 250 µg/m³ over a 15-minute period.

3.1.1.1 December 2024 data summary

There were no exceedences of the particulate air quality standards.





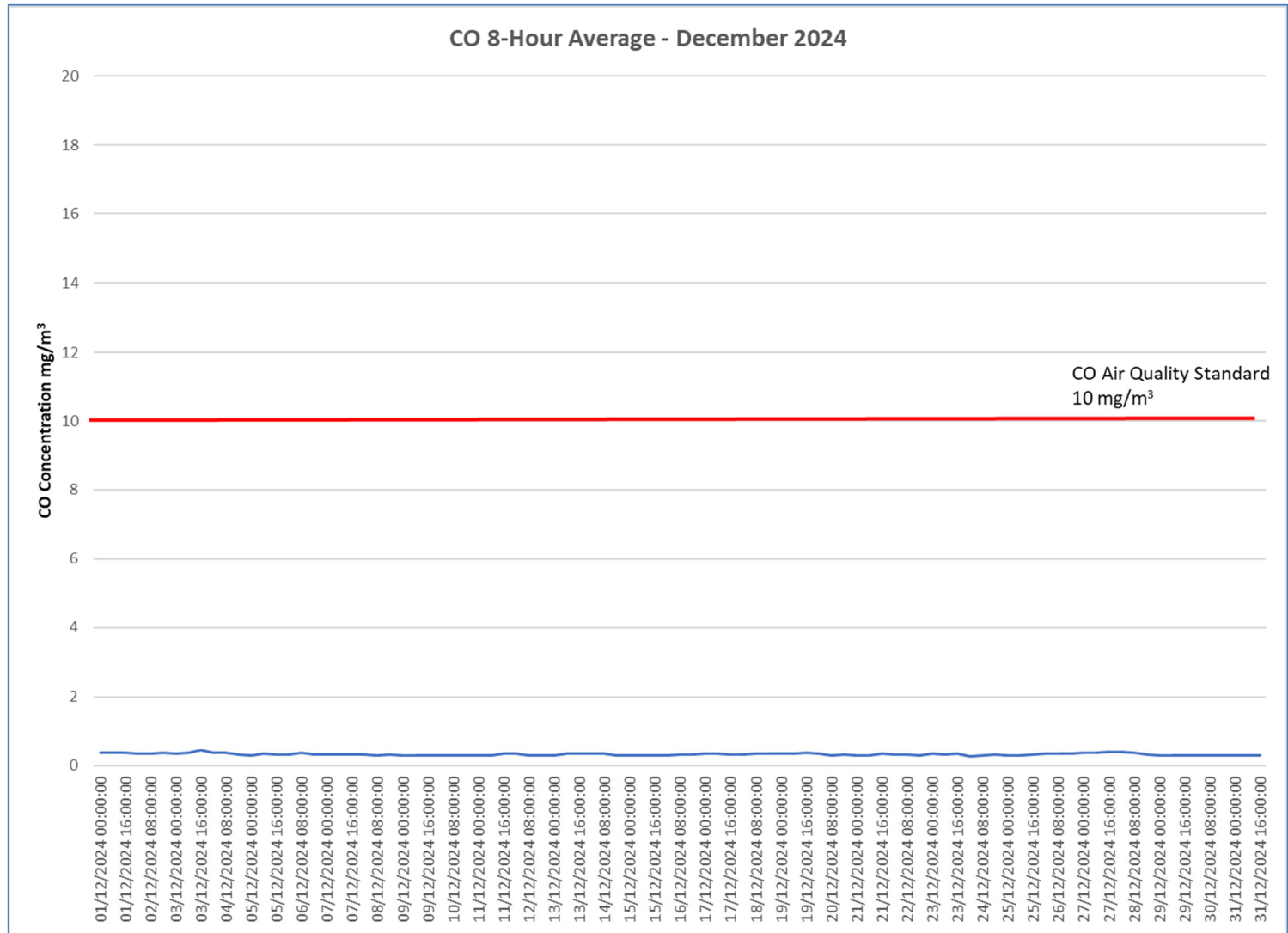
3.1.2 *iGas data*

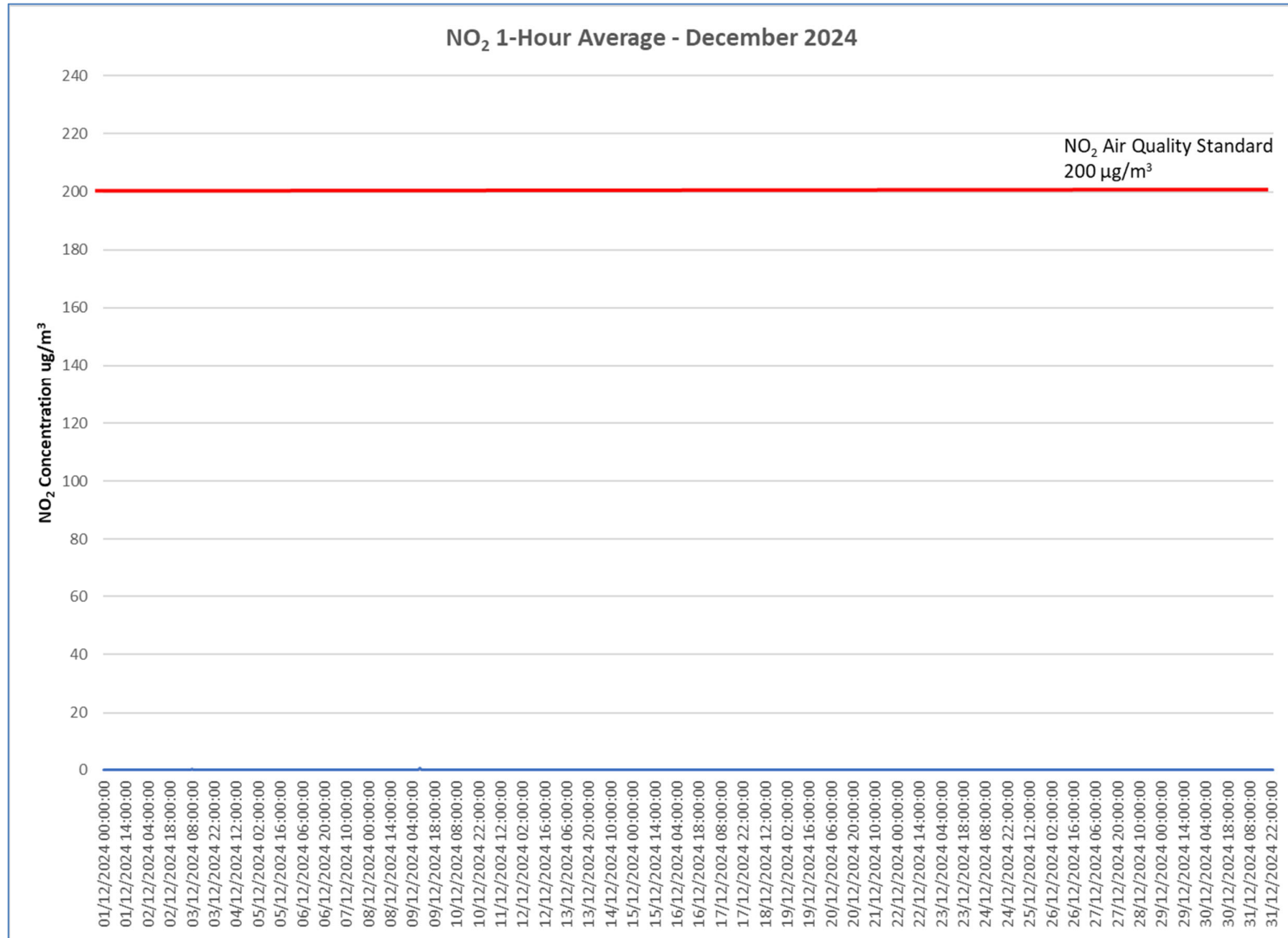
Based upon the current UK air quality guidance, the following relevant alarm trigger levels are active on the iGas analyser and data are presented below:

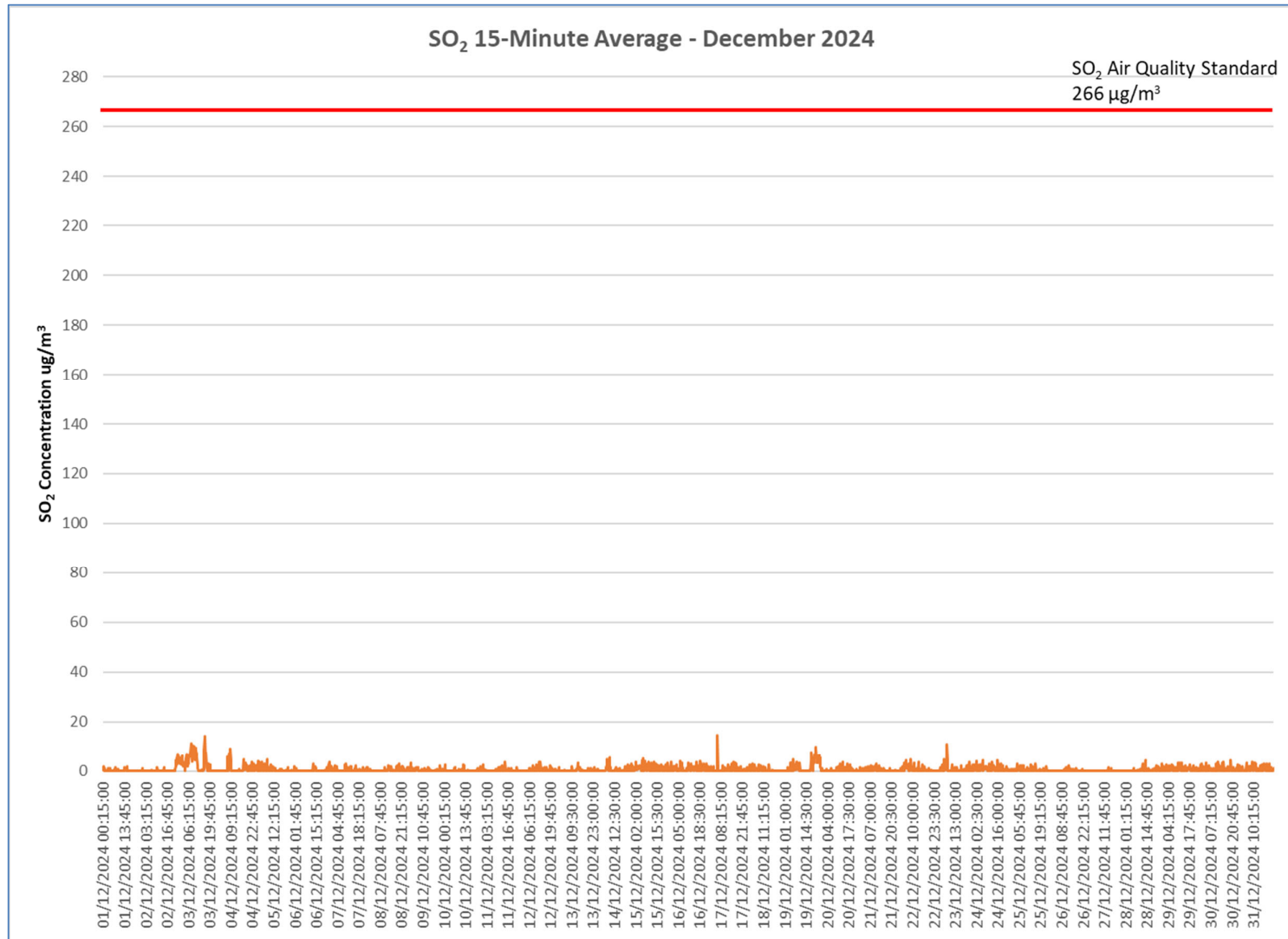
- CO 10 mg/m³ over an 8-hour period;
- NO₂ 200 µg/m³ over a 1-hour period; and
- SO₂ 266 µ/m³ over a 15-minute period.

3.1.2.1 December 2024 data summary

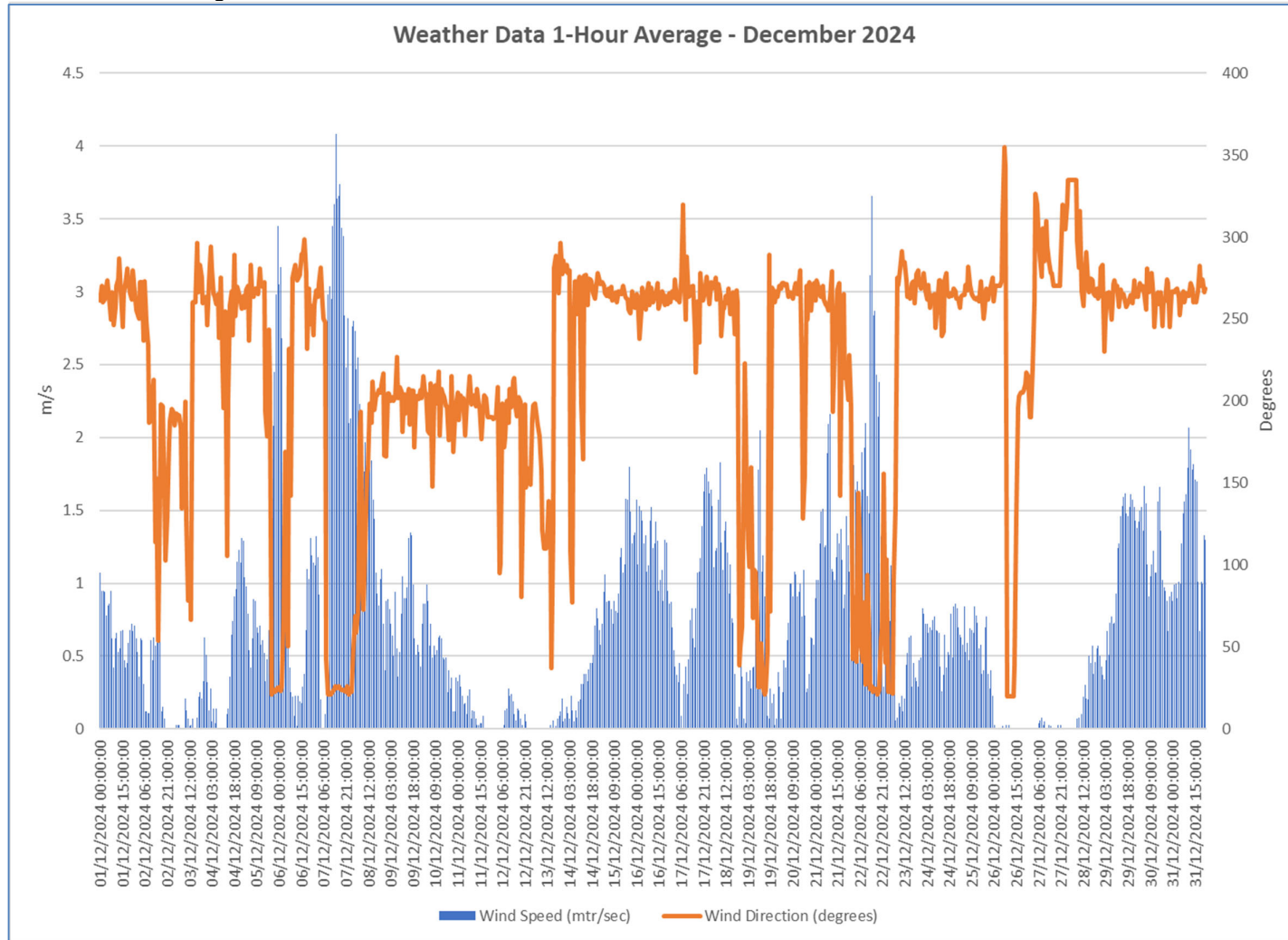
There were no exceedences of the gas air quality standards.







3.1.3 Meteorological data



3.2 Clitheroe AQS-2

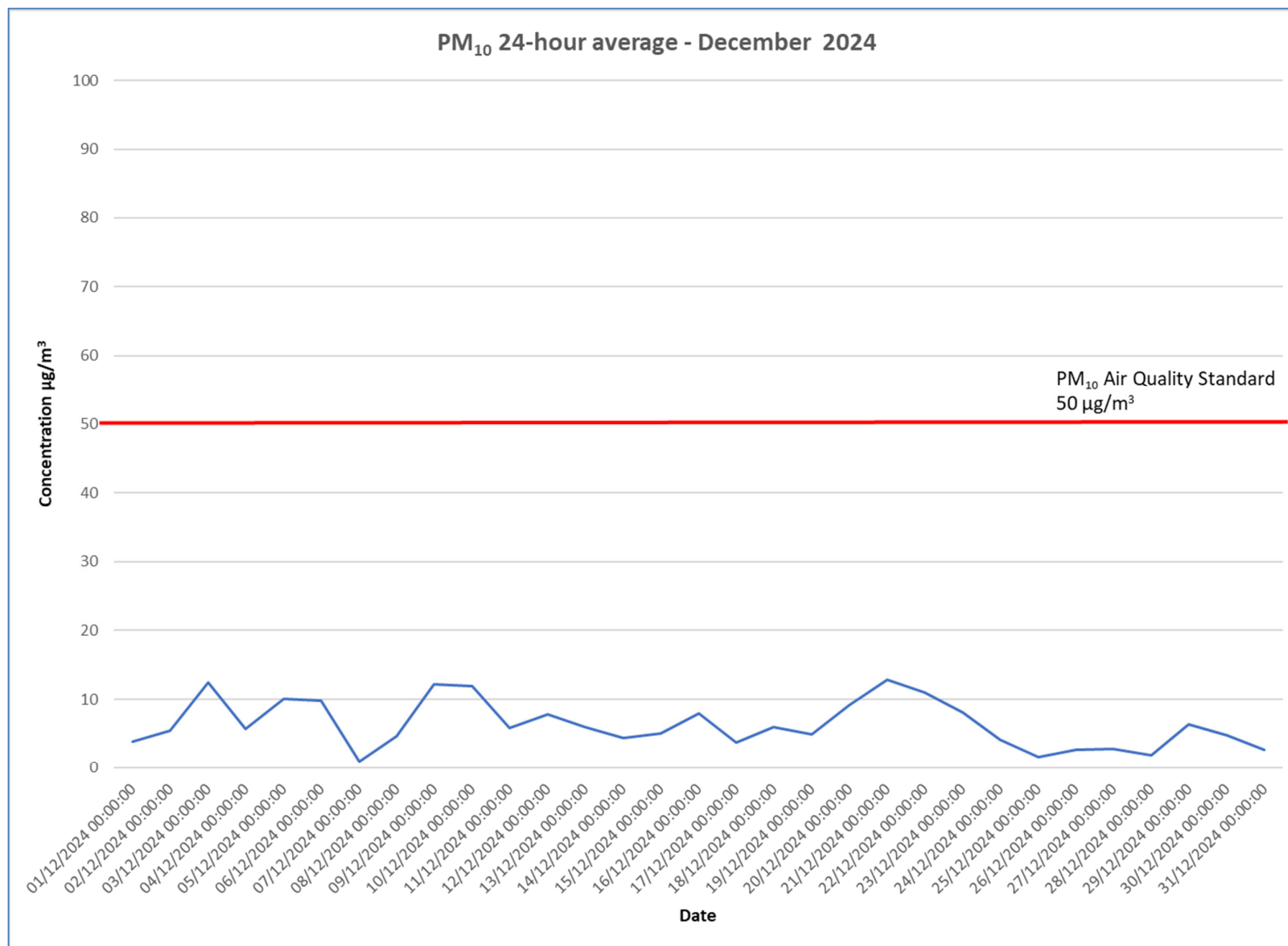
3.2.1 *Osiris particulate data*

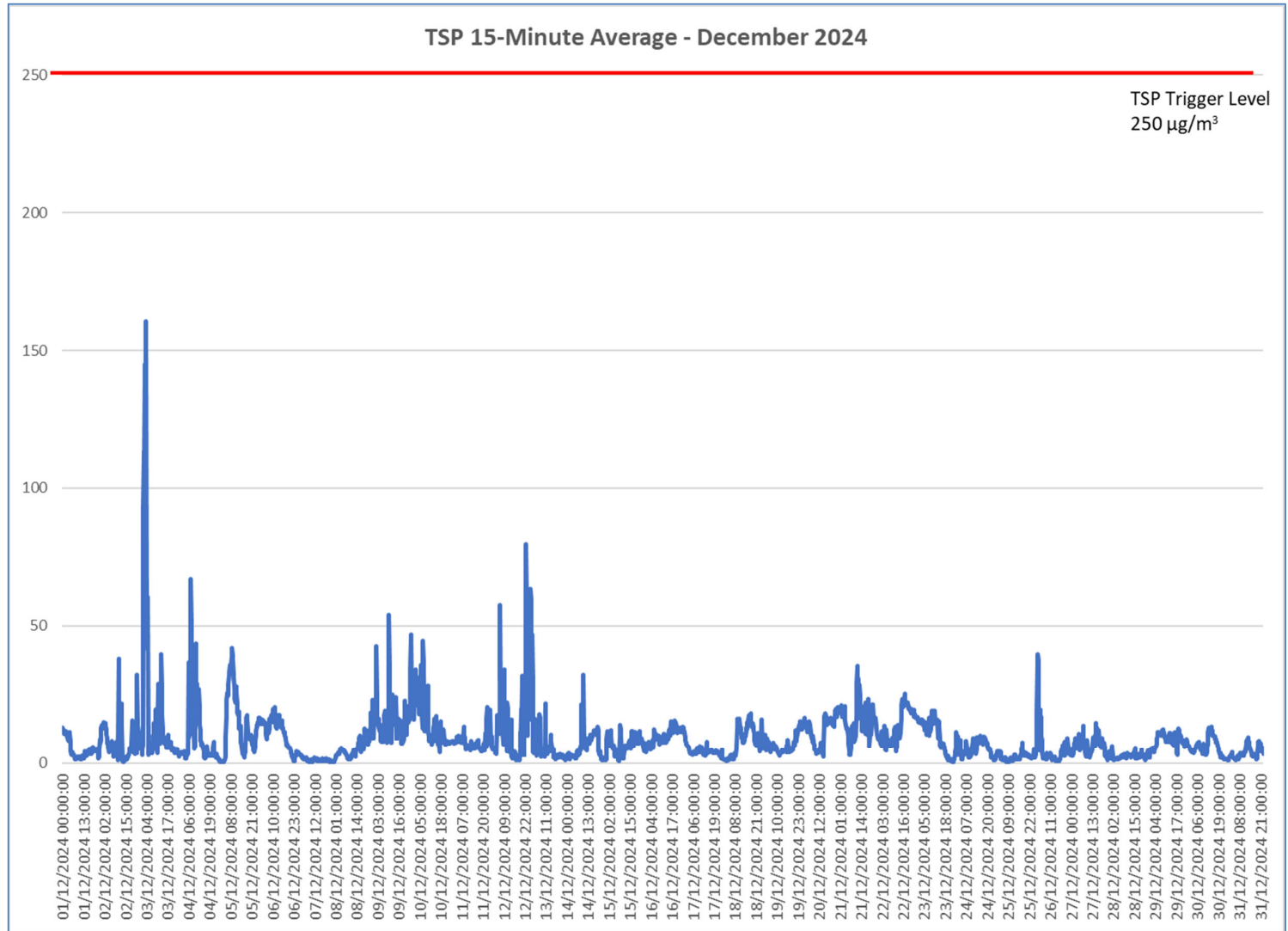
Based upon the current UK air quality guidance, the following relevant alarm trigger levels are active on the Osiris analyser and data are presented below:

- PM₁₀ 50 µg/m³ over a 24-hour period; and
- TSP 250 µg/m³ over a 15-minute period.

3.2.1.1 December 2024 data summary

There were no exceedences of the particulate air quality standards.





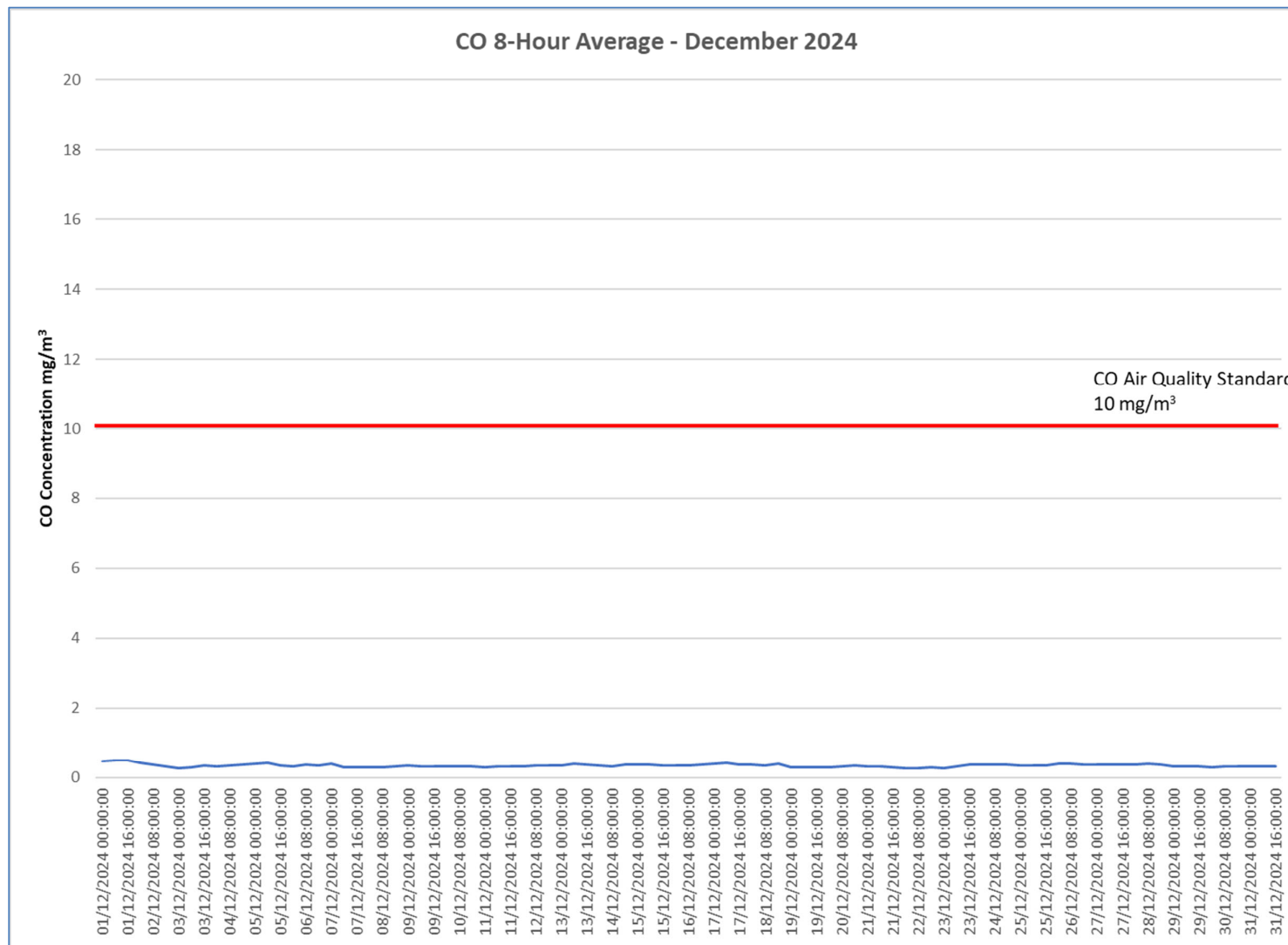
3.2.2 *iGas data*

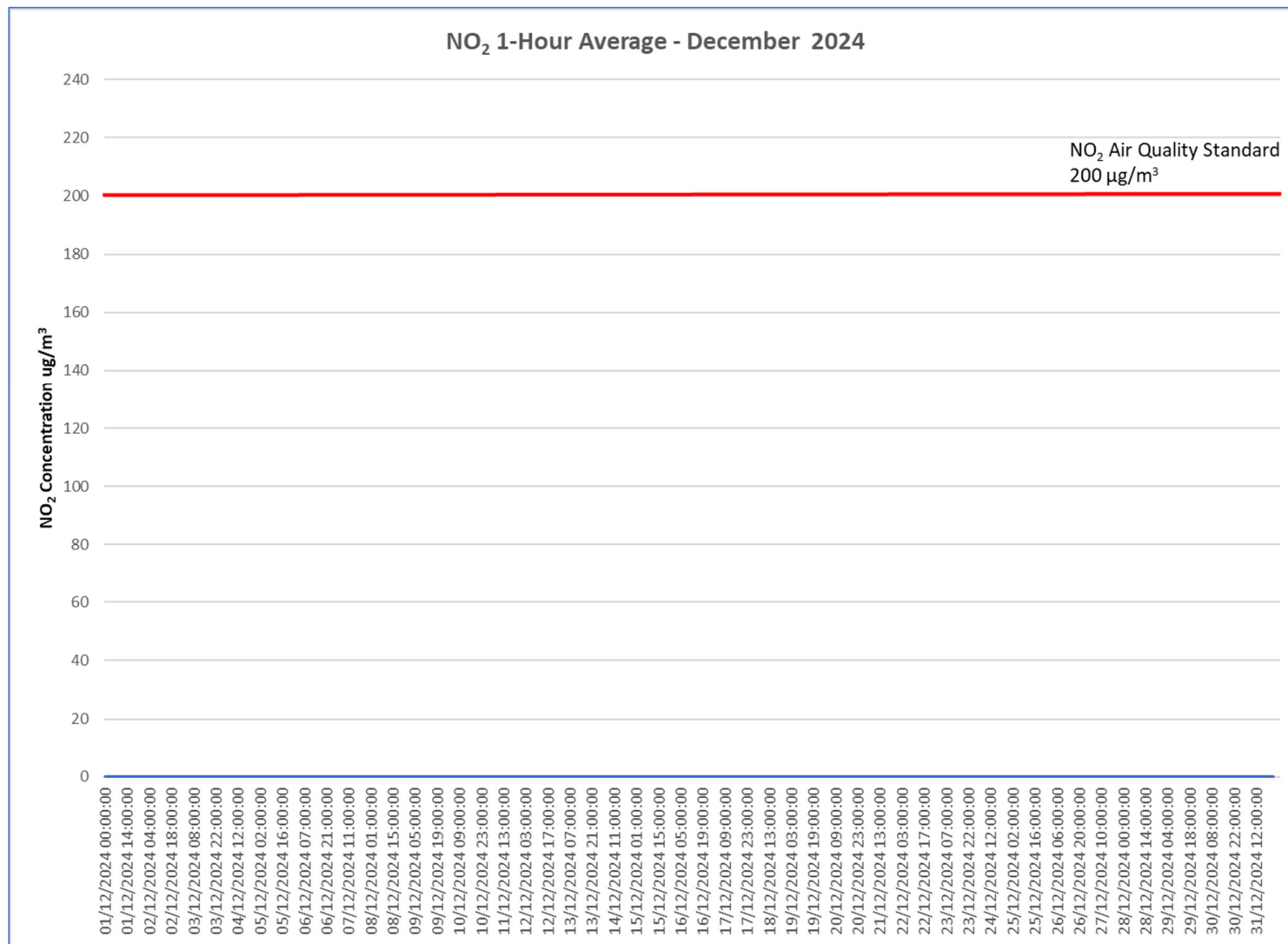
Based upon the current UK air quality guidance, the following relevant alarm trigger levels are active on the iGas analyser and data are presented below:

- CO 10 mg/m³ over an 8-hour period;
- NO₂ 200 µg/m³ over a 1-hour period; and
- SO₂ 266 µ/m³ over a 15-minute period.

3.2.2.1 December 2024 data summary

There were no exceedences of the gas air quality standards.







SO₂ Air Quality Standard
266 µg/m³

SO₂ Concentration ug/m³

001/12/2024	00:15:00
001/12/2024	04:15:00
002/12/2024	08:15:00
002/12/2024	16:15:00
003/12/2024	06:00:00
003/12/2024	18:45:00
004/12/2024	07:45:00
004/12/2024	21:15:00
005/12/2024	10:30:00
005/12/2024	23:30:00
006/12/2024	13:15:00
007/12/2024	02:30:00
007/12/2024	16:00:00
008/12/2024	06:15:00
008/12/2024	20:30:00
009/12/2024	10:15:00
009/12/2024	23:30:00
010/12/2024	12:30:00
011/12/2024	01:30:00
011/12/2024	14:30:00
012/12/2024	03:45:00
012/12/2024	16:15:00
013/12/2024	06:30:00
013/12/2024	20:00:00
014/12/2024	08:45:00
014/12/2024	21:45:00
015/12/2024	11:30:00
016/12/2024	14:15:00
016/12/2024	17:00:00
017/12/2024	03:30:00
017/12/2024	16:30:00
018/12/2024	06:45:00
018/12/2024	19:45:00
019/12/2024	09:00:00
019/12/2024	20:45:00
020/12/2024	13:45:00
021/12/2024	03:30:00
021/12/2024	17:15:00
022/12/2024	06:15:00
022/12/2024	19:00:00
023/12/2024	08:15:00
023/12/2024	23:15:00
024/12/2024	12:30:00
025/12/2024	01:45:00
025/12/2024	14:45:00
026/12/2024	17:45:00
027/12/2024	20:45:00
027/12/2024	24:00:00
028/12/2024	23:00:00
029/12/2024	12:30:00
030/12/2024	15:15:00
031/12/2024	04:30:00
031/12/2024	17:45:00

3.2.3 Meteorological data

