

Bulls Lodge

Site Biodiversity Action Plan



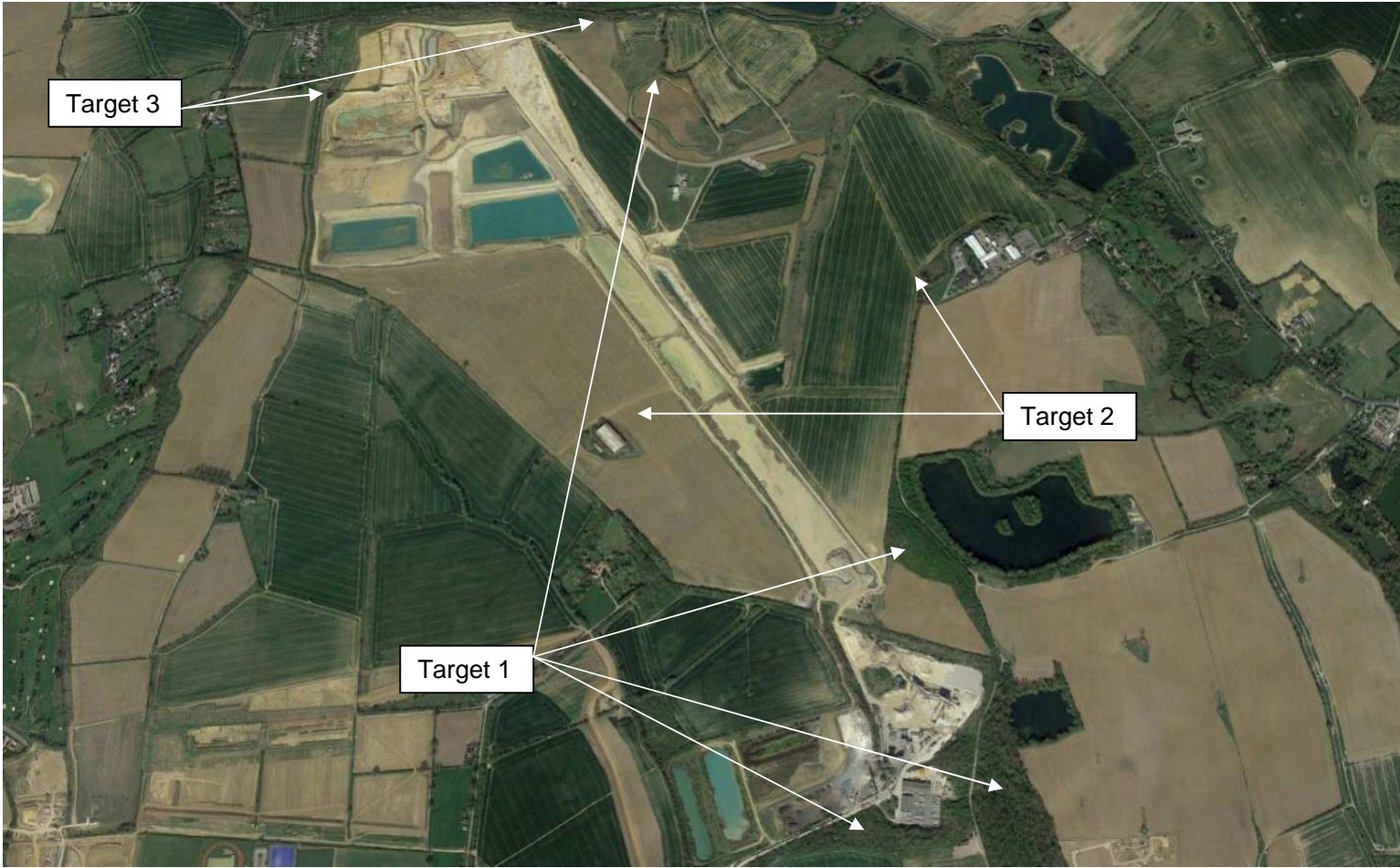
Prepared: October 2009

**Updated: December 2013
August 2018**

Site Information- Bulls Lodge

Site Name and Location (incl. Grid Ref.)	Bulls Lodge Quarry, Chelmsford TL 74596 10710 (site office)
Hanson Company	Hanson Aggregates
BAP(s) that will be targeted	Essex BAP 2011 UK BAP
Habitat(s) to be developed	Broadleaved woodland, hedgerows, open water, reedbeds
BAP species to be encouraged	Brown hare Bat sp Great crested newt
Designated Natural Area	London Basin
Background and site description	<p>Bulls Lodge Quarry is a sand and gravel producing operation located on an old airfield. The site comprises several parcels including the current extraction area on the old Boreham airfield which is surrounded by 71ha of restored land used for arable farming, the plant site is situated to the south of the airfield, Park Farm future extraction area is to the west and Brick House Farm future area is to the south east. Extraction is currently progressing in a clockwise direction up the western flank of the airfield.</p> <p>Advance tree planting operations took place prior to commencement of extraction, along the western and northern boundaries of the airfield, and to the east of Brick House Farm in order to build up a visual screen to benefit properties located in the area.</p> <p>The landlord requires where possible, for restoration to comprise agriculture and on completion of 5 years of statutory aftercare, Hanson are obliged to hand over responsibility and management of the restored land to the them, thus biodiversity works are limited to this time period unless otherwise can be agreed or arranged with the Estate.</p>
National Designations (SSSI, SAC, SPAs, RAMSARs and NPs) within 500m	None
Resource Requirements-comment on cost if appropriate	Restoration and biodiversity works will be paid for from the restoration and stripping budgets.
Contribution to biodiversity	Management of restored woodland planting and the further creation of woodland, hedgerow and aquatic habitats to include reed beds will add to national and local biodiversity goals and improve habitat linkage in the local area.
Partners and Local initiatives	Essex County Council
Other documents supporting the site BAP	Revised restoration design (draft) Ecological reports

Site Layout



Action Plan

Item No.	Objective	Biodiversity Feature	Targets	Tasks	Assessing Indicator	Responsible Person	Timescale (Completion)
1	Improve and increase the extent of native broadleaved woodland	Broadleaved woodland and associated flora and fauna e.g. bats	Improve quality of existing woodland SNCI copse and quarry plantations	1. Identify and assess management requirements of SNCI copse and plantations	Report produced	Landscape Architect	Q4 2019
			Increase extent of woodland cover	2. Implement management to include reduction in non-native species and improved age class diversity	<20% non-native species	Site manager	First phase of thinning Q4 2020
				3. Increase dead wood habitat	Deadwood in place	Site manager	Q4 2020
				4. Revise current restoration scheme to include increased woodland areas	Plan produced	Landscape Architect	Plan produced awaiting planning approval
				5. Carry out planting in first available season following completion of restoration	No. plants planted	Site manager	2ha planted 2017 Ongoing
2	Improve and increase the extent of species rich hedgerows	Great crested newt, hedge bottom groundflora, bat sp	Introduce suitable hedgerow management to maximise biodiversity potential	1. Carry out a hedgerow assessment and identify management requirements	Report produced and management initiated and agreed with tenant farmer	Landscape Architect	Q4 2020
			Increase extent of hedgerow habitat	2. Revise existing working and restoration plan to	Plan in place	Landscape Architect	Plan produced awaiting

				include a coherent hedgerow network 3. Plant restoration hedgerows within 2 years of completing restoration phase	Metres of hedge planting	Site manager	planning approval 2.5km planted since 2005 Ongoing
3	Safeguard current population of Great Crested Newt	Great Crested Newt and associated ponds and foraging habitat	Ensure no detrimental impact on GCN population from ongoing quarry workings	1. Conduct surveys, stripping and habitat clearance and mitigation in accordance EPS licencing requirements	Successful implementation of EPS licences and no net loss of GCN population	Site Manager	Ongoing