

Tytherington Quarry
Community Liaison Group Meeting
24th July 2025
Meeting Room at Tytherington Quarry

MINUTES

ATTENDEES:

Cllr Jon Lean (JL) (CHAIR)	South Gloucestershire for Frampton Cotterell Ward
Hugh Johnson (HJ)	Tytherington Parish Council
John Graham (JG)	Alveston Parish Council
Lindsay Saunders (LS)	SGC PROW Officer
Chris Bloor (CB)	Thornbury Town Council
Keith Spooner (KS)	Resident
Esther Hardy (EH)	HM UK, Tytherington Quarry Unit Manager
Michelle Beasley (MB)	HM UK, Secretariat
Trystan Mabbitt (TM)	HM UK, Consenting & Development Manager, Strategic Projects
Nicholas Upperdine (NU)	HM UK, South Central Area Operations Manager

GUESTS:

Mark Parker (MP)	Network Rail, Lead Portfolio Manager
Claire McGine (CM)	Network Rail, Senior External Communications Manager

APOLOGIES AND MEMBERS ABSENT:

Simon Ford (SF)	South Gloucestershire Council Planning and Minerals Dept
Neil Higgs (NH)	South Gloucestershire Council (EHO)
Paul Chapman (PC)	Iron Acton Parish Council
Andy Duncan (AD)	HM UK, Principal Landscape Manager
Samantha Stagg (SJS)	James Reed Public Relations (HM UK PR agency)

AGENDA FOR TYTHERINGTON QUARRY COMMUNITY LIAISON MEETING

1. **Welcome and introduction** - Chair Jon Lean (JL)
 - Welcome and introductions.
 - Review of minutes from the last meeting.
 - Matters arising from last minutes.
2. **NWR Update** – Claire McGine (CM) & Mark Parker (MP)
3. **Tytherington operations** – Esther Hardy (EH) Unit Manager Tytherington Quarry.
 - Operations and logistics including blasting.
 - Feedback received.
 - Rail update.
 - Community update.
 - Residents' day update.
4. **Environmental, landscape and biodiversity update** – Esther Hardy (EH) in Andy Duncan (AD) absence.
5. **Land and mineral planning update** – Trystan Mabbitt (TM) Consenting and Development Manager, Strategic Projects.
6. **AOBs.**
7. **Date for future meetings.**

MEETING MINUTES

1. Welcome and Chair introduction.

- JL welcomed everyone and asked if they had read the draft minutes from the previous meeting, and if they were happy with the content.
- The group replied they were happy with the content.
- JL went through the actions/matters arising from the last meeting.
 1. AD to liaise with Tytherington parish council re replacement trees and wildflowers on motorway slopes. *Still on going.*
 2. JB to provide update on speed reduction on Tytherington Road. - EH (now Unit Manager) has submitted the request.
 3. JB to provide comparison of energy usage between Tytherington Quarry and another quarry that uses contract crush in its daily operations. - *Unfortunately, not comparable.*
 4. JB to instigate haulier site inductions at Tytherington, in line with other HMUK quarries. - All hauliers are inducted – and a new MP Connect system is also being introduced. (An MP Connect card is a digital system, comprising a smartcard and a mobile app, used in the UK quarrying and mineral products industry to verify a driver's or contractor's qualifications, training, and competencies for site entry. It serves as a "one-card" solution to replace multiple paper certificates, storing a real-time record of an individual's credentials and providing a consolidated database accessible to site operators. Drivers must complete the MPQC Site Safety Awareness course to be issued the card, which helps ensure site safety by granting entry only to qualified individuals.)
 5. JB to speak with crusher operator to ensure they are still using dust suppression when crushing. - All being used as per requirement in conditions, EH has shared examples of the system with residents.
 6. SS to contact Network Rail's communications team re forthcoming closures. - NWR to give update today
 7. AD to make contact with streetworks@southglos.co.uk who may be able to expedite road closure delays. - *No further action*
- KS said the dust photos were well received and although there has been some it has not been as severe as in the past.

- JL asked if he had been put down as a backup contact for the speed monitoring, to which EH replied she had attached all supporting documents JB had shared and she believed JL's was but would double check.

2. NWR Update

- CM introduced herself and MP and gave an overview of their roles within Network Rail (NWR).
- CM said the work that is being carried out locally, is replacing track and ballast that's coming to the end of its working life, of which a total of 1255 meters over two years will be replaced.
- CM said this year's work was split into two sections to be completed in May and August, with the third section being completed in 2026. She said before works could be started, inspections in the tunnel had to be carried out so NWR can work safely.



- CM showed an ariel map of the area and said the white arrow on the map highlights where the works were carried out in May and the yellow arrow indicates the works being carried out in August. She said 2026 works will be closer to the village, but NWR is happy to come back again to talk about that.
- CM said once the works are complete, the upgrade should last a long time, with only maintenance visits required.
- MP introduced himself and explained what track renewal is and the process involved.

Track renewal – our sequence of work

1. Remove track panels



2. Excavate



3. Unload sand



4. Unload bottom stone



5. Lay sleepers



6. Install & clip up rail



7. Unload top stone



8. Welding

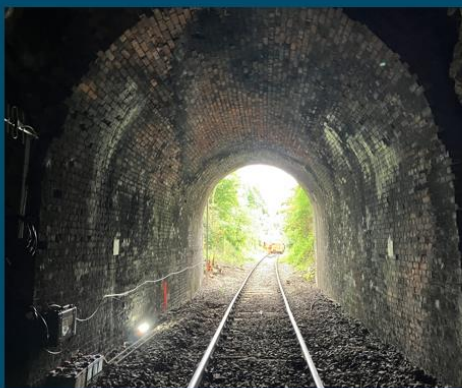


9. Consolidating track stone



- MP said normally tunnels are brick built, but what's unusual about the tunnel here, is that it's only brick built at either end, and the rest is natural all the way through. This meant it had to be inspected to ensure there was no loose rocks that could fall on the staff working in the tunnel.

Inside the tunnel



- MP said staff can access from West Street, Tytherington and the quarry of which all staff are fully inducted regarding health and safety.

- CP detailed that communications had been sent to residents ahead of the May work and covered works for the whole year but, unfortunately, the distribution area didn't go far enough towards the village. MWR apologises to anyone that was affected that didn't receive the letter.
- CP said a follow-up letter to wider area was sent immediately as well as a reminder letter for the August works. She said no complaints were received last time, but it's possibly because they were sent to the quarry. We do have a 24-hour National Helpline which is manned by a human. The number is 03457 11 41 41.
- CP asked if anyone had any questions.
- HJ asked how the ballast wears out.
- MP explained that a range of things cause it to wear out, from weight, weather and gradient.
- HJ asked if the ballast came from the quarry.
- MP said no as limestone is too soft, NWR uses granite.

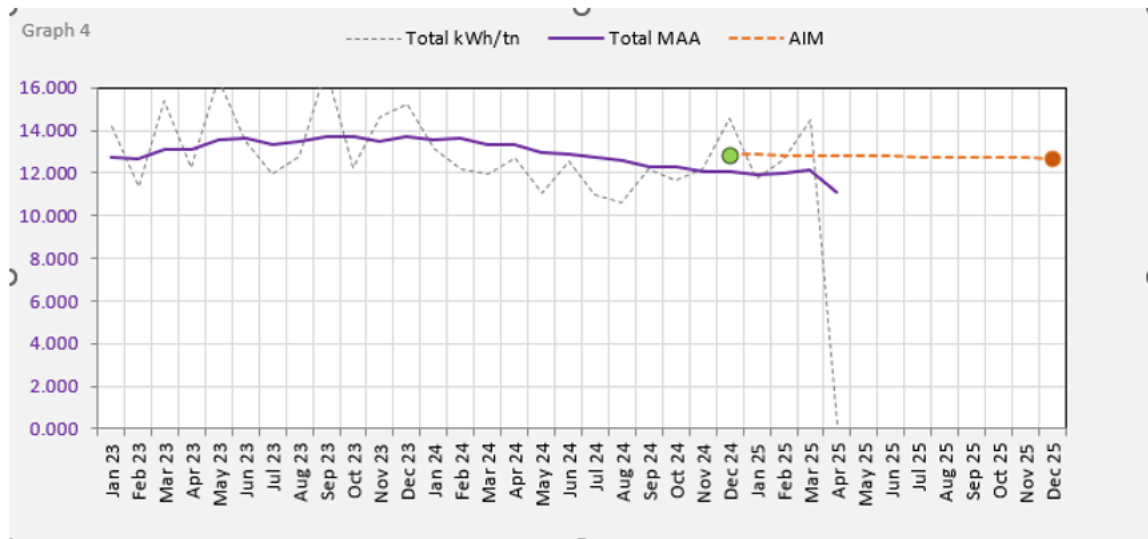
3. Tytherington operations

Operational and logistics overview

- EH introduced herself as the new Unit Manager a Tytherington Quarry.
- NU introduced himself as the new South Central Area Operations Manager.
- EH said a Higher Apprentice had been employed and will be starting in September, and as well as herself being newly in post as Unit Manager, she also had a new Assistant Quarry Manager and production supervisors.
- EH showed the group some production volume figures for the year so far and said 57% of the material dispatched was being transported by rail.
- EH said we are currently blasting on levels 2 and 3 and working operationally on levels 4-6, opening level 7 late 2025.

Groves End energy use

- EH showed the energy usage from electrifying the pumps in Groves End, which has been steadily declining.



Quarry Blasting

- EH advised of currently blasting on levels 2-6, having completed 37 blasts in January to date, and all the data from the vibrograph showed the blasting operations to be well in line with the sites planning permission.

The Slad

January – July 22nd

Highest: 5.5 mm/s
Lowest: 0.5 mm/s
Average: 1.68 mm/s

AOP

Highest: 156 dB
Lowest: 103 dB
Average: 118.4 dB

West Street

January – July 22nd

Highest: 5.05 mm/s
Lowest: 0.4 mm/s
Average: 2.56 mm/s

AOP

Highest: 122 dB
Lowest: 103 dB
Average: 111 dB

Lime Kiln Court

January – July 22nd

Highest: 2.75 mm/s
Lowest: 0.4 mm/s
Average: 1.4 mm/s

AOP

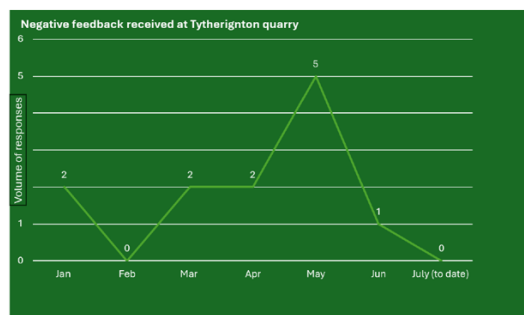
Highest: 116 dB
Lowest: 99 dB
Average: 106.3 dB

Feedback received.

- EH said between January and July 2025 she had received 11 complaints regarding operations.

11 pieces of negative feedback:

- Daytime noise: 1
- Blasting: 2
- Dust: 6
- Railway: 1 (idling train)
- Other: 1 odour



- EH advised the group dust monitoring had been installed in the area and would hope to have some data to share by the next meeting.
- KS wanted it noted that EH coming to visit was well received by the residents.
- TM added that off site dust monitoring was being done in Stowell Hill as well.
- KS said a resident has mentioned noise in the evening, not every night but a couple of times.
- EH said she was made aware of engine noise and spoke with the night shift about parking this side and also asked hauliers to turn off their engines if they are waiting.

Rail update

- EH said on average they were receiving 19 trains per week, with day trains continuing.
- EH said Tytherington Sidings would be closed for two weeks at the beginning of August during the day, to repair some wet beds on the Heidelberg Materials track and that NWR works were planned for the August bank holiday. (Midnight on Thursday until 6am on Tuesday).

Community update

- EH a donation of £500 had been made to Thornbury in Bloom and the quarry is also collaborating with them to put something at the quarry entrance, works still to be confirmed.
- EH said a defibrillator had been donated and installed at the Slad.
- KS said it is operative, and one or two people have been trained on how to use it. He said if can get a small group from the community together, would it be possible to get a briefing on how to use it.
- EH said we could arrange something in the village hall, I will pay the Red Cross to do it. I'll also put in a plan to make sure it's checked once a month and maintain it.
- KS wanted it recorded that he wanted to pass on thanks from the Slad.



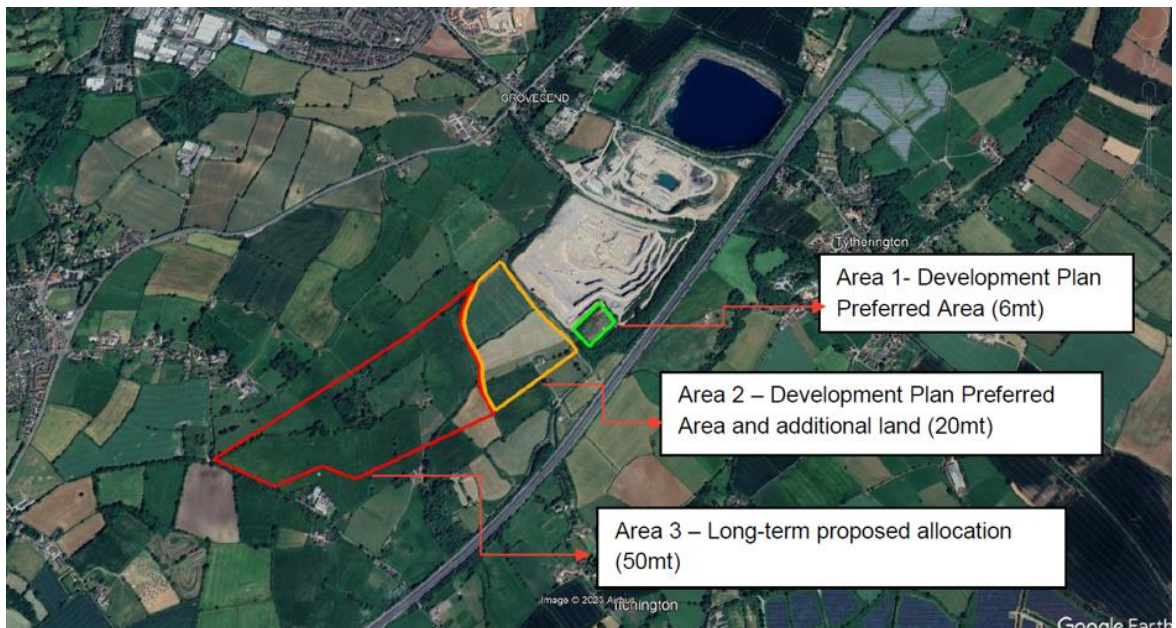
- EH there is a Tytherington Quarry Community web page, and there is a link for donation requests which is : www.communities.heidelbergmaterials.co.uk/en/sites/tytherington-quarry/supporting-the-community

4. Environmental, landscape and biodiversity update

- EH in AD's absence advised the group that Jubilee Field ash trees – felled by Branch walkers 17th March, the stumps were ground out, tops chipped and cordwood removed, but she was unsure what was planned for the stumps.
- HJ said one stump had been chopped up but the one that's left they'll be able to do something with, for example carving.
- EH said crown reduction repeated on office car park Poplar trees in March – likely to be needed on 3–5-year cycle.
- EH said Woodleaze Level 3 rock trap soil placement was ongoing, wildflower seeding imminent. This bench will eventually be underwater, so this is temporary/interim habitat creation.
- EH said dormouse surveys ongoing by WSP ecologists for hedgerows within 6MT approved "Soil Store" area, Natural England European Protected Species (EPS) Licence application imminent to allow hedge stump translocation at optimum time of year.
- EH said commencement of soil movements is imminent for longer term topsoil storage on Grovesend Tip.
- EH said Itchington Roadside hedge laying is under review - seeking price from alternative contractor and to concentrate only on the more recent ½ planted in 2006 from start of BOAT to pylon corner.
- EH said additional hazel planting had been completed on weighbridge/Slad bank, and weed control was ongoing.

5. Land and mineral planning update

- TM said SGC had granted planning approval for the 6mt extension in April 2025. It's within the quarry existing boundary as per area 1 in map below.



- TM said the company is now liaising with SGC on the detail, known as discharge conditions.
- TM said the company is continuing to liaise with SGC on the development of its Local Plan (expected to be finalised late 2026) and we are carrying out initial onsite surveys to support these discussions.
- TM said future extension proposals will be subject to a planning application which will be supported by an Environment Impact Assessment (EIA). He said the process will also include pre-application consultation and SGC's own public consultation. Any future extension proposals will be subject to SGC's Local Plan being approved.
- TM said work on SGC's Local Development Plan was ongoing. There has been a public consultation, but he was not aware of the outcome of this.
- JL said SGC's Local Plan will go to a planning inspector later in the year and will possibly be adopted late 2026.
- CB asked if the area being discussed was area 2 on the map.
- TM said the current application is the 6mt in the green area and the next preferred area would be the orange area, which would lead up to the Jubilee Way.
- CB asked what would happen to Jubilee Way.
- TM said it's something that's being looked at as part of the orange area and how best that can be planned long term. The plan subject to the LPD finalisation would be to re-route along the Itchington Lane.
- CB asked if it would be better to widen Itchington Road and have a foot and horse path parallel with it.
- TM said that this is something the company is considering in form of a corridor for all (utilities, walkers and horses/horse riders). There are also several other public rights of way

in the area and that there's been a wider consideration to see if we can re-establish a route back to Tytherington but would have to consult with the council and residents.

- KS said it is really important if you can enhance the area to make it better for public use.
- TM said it's something that the company are certainly happy to consider and improve the current situation surrounding a number of the public rights of way.

CB and LS had to leave.

- KS asked if dates could be put in the minutes about when planning is likely to go in and how long they are expected to take before operations start.
- TM said we have a chart for pre-planning, planning and development and it could be broken down into 10 year and 20 years blocks for example.

6. AOB

- None

Contact details.

Email: tytheringtonquarryenquiries@uk.heidelbergmaterials.com or call us on our freephone number 0800 160 1321

Tytherington Community Web page is
www.communities.heidelbergmaterials.co.uk/en/sites/tytherington-quarry

Heidelberg Careers
www.careers.heidelbergmaterials.co.uk/en

Summary of Actions

1. AD to liaise with Tytherington parish council re replacement trees and wildflowers on motorway slopes.
2. EH to check if JL has been put as a back-up contact for speed monitoring.
3. EH to share dust monitoring data at next meeting.
4. EH to arrange with village hall and red cross to show residents how to use defib.
5. EH to schedule monthly check and maintenance plan for defib.
6. TM to share "planning time-line" data at next meeting.

Proposed dates for next meeting

Thursday 23rd October 2025 17:30

[ENDS]