

**Tytherington Quarry
Community Liaison Group Meeting
23rd October 2025
Meeting Room at Tytherington Quarry**

MINUTES

ATTENDEES:

Hugh Johnson (HJ)	Tytherington Parish Council
Chris Bloor (CB) (Interim Chair)	Thornbury Town Council
Keiron Smith (KS)	EHO, South Glos Council
Keith Spooner (KS)	Resident
Esther Hardy (EH)	HM UK, Tytherington Quarry Unit Manager
Michelle Beasley (MB)	HM UK, Secretariat
Trystan Mabbitt (TM)	HM UK, Consenting & Development Manager, Strategic Projects
Rob Lane (RM)	HM UK, South Central Area General Manager
Samantha Stagg (SJS)	James Reed Public Relations (HM UK PR agency)

APOLOGIES AND MEMBERS ABSENT:

Cllr Jon Lean (JL) (CHAIR)	South Gloucestershire for Frampton Cotterell Ward
John Graham (JG)	Alveston Parish Council
Lindsay Saunders (LS)	SGC PROW Officer
Simon Ford (SF)	South Gloucestershire Council Planning and Minerals Dept
Neil Higgs (NH)	South Gloucestershire Council (EHO)
Paul Chapman (PC)	Iron Acton Parish Council
Andy Duncan (AD)	HM UK, Principal Landscape Manager
Nicholas Upperdine (NU)	HM UK, South Central Area Operations Manager

AGENDA FOR TYTHERINGTON QUARRY COMMUNITY LIAISON MEETING

1. **Welcome and introduction** – Interim Chair Chris Bloor (CB)
 - Welcome and introductions.
 - Review of minutes from the last meeting.
 - Matters arising from last minutes.
2. **Tytherington operations** – Esther Hardy (EH) Unit Manager Tytherington Quarry.
 - Operations and logistics including blasting.
 - Feedback received.
 - Rail update.
 - Community update.
 - Residents' day update.
3. **Environmental, landscape and biodiversity update** – Esther Hardy (EH) in Andy Duncan (AD) absence.
4. **Land and mineral planning update** – Trystan Mabbitt (TM) Consenting and Development Manager, Strategic Projects.
5. **AOBs.**
6. **Date for future meetings.**

MEETING MINUTES

1. Welcome and Chair introduction.

- CB welcomed everyone and asked if they had read the draft minutes from the previous meeting, and if they were happy with the content.
- The group replied they were happy with the content.
- CB went through the actions/matters arising from the last meeting.
 1. *AD to liaise with Tytherington parish council re replacement trees and wildflowers on motorway slopes. Update in slides.*
 2. *EH to check if JL has been put as a back-up contact for speed monitoring. - JL was put as back up, confirmation received that it has been received and is in for consideration.*
 3. *EH to share dust monitoring data at next meeting. Interim update included.*
 4. *EH to arrange with village hall and red cross to show residents how to use defib. - Provisional date for 27 Nov 6pm. 12 spaces so need to contact me to book in please. Can do a further one in the new year if required and enough interest.*
 5. *EH to schedule monthly check and maintenance plan for defib. - Defib is being checked as part of our routine first aid checks and logged on the circuit portal.*
 6. *TM to share "planning time-line" data at next meeting. Update in slides.*

2. Tytherington operations

Operational and logistics overview

- EH shared production volume figures for the year so far and set out that 52% of the material dispatched was being transported by rail.
- EH said we are currently finishing excavation on levels 2 & 3 and working operationally on levels 5 & 6. She said a sink hole had been put into level 7 and there is work being carried out throughout the quarry to widen the benches.
- EH said a Higher Apprentice has started and will be based between Tytherington and Chipping Sodbury quarry, plus we've taken on a new employee who lives locally.

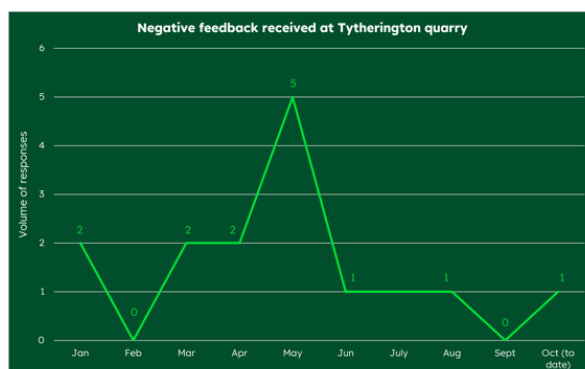
Quarry Blasting

- EH advised of currently blasting on levels 0-6, having completed 53 blasts this year to 22nd October, and all the data from the vibrograph showed the blasting operations to be well in line with the sites planning permission.
- EH said the blasting results have been consistent. She said we are no longer monitoring in Lime Kiln Court as it was for a 12-month period and the resident asked for the vibrograph to be removed when the 12 months were up.
- KS asked if it was the resident that had requested monitoring at their property, but had it removed as they were now happy?
- EH said yes, we did some seed hole analysis and since the vibrations have been much lower.

The Slad Highest: 5.5 mm/s Lowest: 0.5 mm/s Average: 1.81 mm/s AOP Highest: 156 dB Lowest: 103dB Average: 116 dB	West Street Highest: 5.05 mm/s Lowest: 0.4 mm/s Average: 2.79 mm/s AOP Highest: 122 dB Lowest: 103 dB Average: 110 dB	Lime Kiln Court – no longer monitored as resident requested it be removed after the agreed 12 months. Previous data: Highest: 2.75 mm/s Lowest: 0.4 mm/s Average: 1.4 mm/s AOP Highest: 116 dB Lowest: 99 dB Average: 106.3 dB
----------------------------------------------------------------------------------------------------------------------------------------------------------	---------------------------------------------------------------------------------------------------------------------------------------------------------------	----------------------------------------------------------------------------------------------------------------------------------------------------------------------------------------------------------------------------------------------------------------------------------

Feedback received.

- EH said between 25 July and 23 October 2025 she had received 3 complaints regarding operations. One for road sweeper timings, and it kicking up dust. One for dust and one complaint relating to NWR and a gentle reminder about hedge cutting.



Rail update

- EH said on average they were receiving 19 trains per week, with day trains continuing.
- EH said all the NWR main branch line work was now completed for the year and a derailer has been reinstalled. This is located just before the tunnel, to protect the crossings between here and Yate should there ever be any issues. She went on to say Tytherington sidings were also re-bedded with new ballast and sleepers over the August shutdown.

Community update

- EH said Red Cross Defib training has been booked for 27 November at 6pm at the quarry offices for up to 12 people. She said if there is more interest we can hold a second date in the new year.
- CB asked if anyone could attend the defib training.
- EH said yes, but on a first come first serve basis as there are only 12 places.
- KS said he thought the training was just for Slad residents, to which EH replied that it was primarily, but if there were not enough people from The Slad to fill the course, she would open it up to all.
- KS said he would chase the residents for a reply.
- EH said a prize had been donated to the Christmas Raffle at Tytherington Preschool, and a previous financial donation to support new doors for Alveston Jubilee Hall for new doors was nearing completion.



- EH said a donation of 40 tonnes of stone had been made to the Harwicke car park for resurfacing work.
- EH there is a Tytherington quarry Community web page, and there is a link for donation requests which is : www.communities.heidelbergmaterials.co.uk/en/sites/tytherington-quarry/supporting-the-community and we'd also welcome requests for volunteering.

- HJ said he would like from trees for tree planting week. Maybe a flowering cherry tree or Hawthorne in the middle of the triangle, Itchington, near the speed sign. He said there were three trees but one has died.
- SS said she would check with AD, who would follow up with HJ/the Rarish Council.

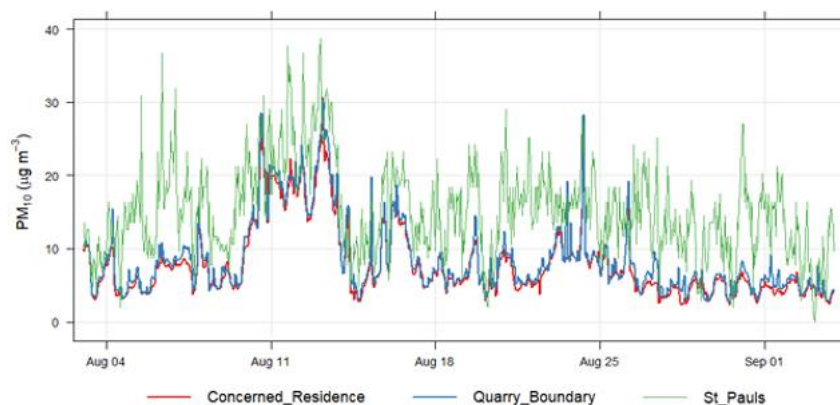
Dust Monitoring

- EH said a six-monthly study for dust monitoring commenced in July 2025 which aims to identify if Tytherington quarry are contributing to dust deposition at a local concerned resident's location.
- EH said the study includes:
 - Monitoring of particulate matter (PM10s) at quarry boundary and at concerned resident's location.
 - Comparison of directional particulate matter (PM10s) concentrations to determine if the deposited dust can be attributed to an individual source.
 - Wind directional analysis – to see if certain winds contribute to elevated PM10 concentrations at either the quarry boundary or at the residence.
 - Analysis of average particulates throughout quarry's operational day to investigate potential links between specific activity and particulate concentrations.
- KS said if it started in July, does that mean it would be finished in January, and you would be able to share the data at the next meeting?
- EH said yes, if the data has been collated and analysed, if not we will share it at the meeting after that.
- EH shared a map of where the monitoring is taking place.
- KS asked about the sampling being in two different locations and how it measured wind. A discussion about the monitoring methodology ensued.
- KS said dust monitoring information derived from the two locations, would not be of any use to the residents of the Slad.
- TM said the reason for the monitoring location was for bespoke monitoring related to the recent planning application. The resident came to us with concerns, so we took it on to have a clear understanding of the situation as it is at present and mindful that the M5 sits on that side of the quarry.
- KS said to clarify, the scheme has been set up to address a particular issue with a resident to find out if it's the quarry or the motorway causing the issue.
- TM said yes, and also to see if it exceeds the planning limits. Initial dust sampling had not been clear, hence the agreement to carry out a more involved study.

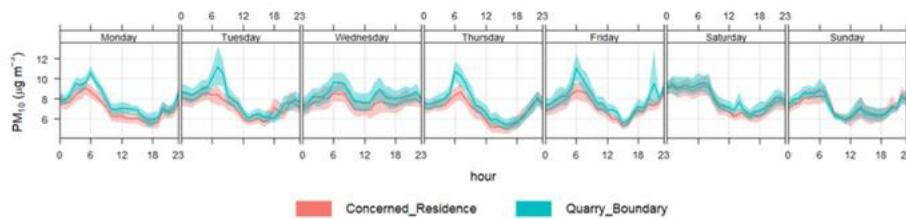


Table 1 – Relevant Air Quality Objectives and Standards

Pollutant	UK air quality objective concentration ($\mu\text{g}/\text{m}^3$)	WHO guideline level concentration ($\mu\text{g}/\text{m}^3$)	Duration	UK count of exceedances permitted per 12-month period	WHO count of exceedances permitted per 12-month period
Particulate matter (PM_{10})	40	15	Annual mean	-	-
	50	45	24-hour mean	35	3 - 4



[Site Information for Bristol St Paul's\(UKA00494\) - DEFRA UK Air - GOV.UK](#)



PM10 Averaged by hour, day and month (mean with 95% Confidence limits), July to September 2025.

- EH said dust concentrations recorded at the concerned resident's location are below WHO and UK air quality objectives.
- EH said that the study into PM10 levels monitored at concerned residents' location *"do not appear to support the inference that frequent disamenity is occurring due to the generation and transport of dust originating from the activities at Tytherington quarry."*
- TM said we will provide a full summary post January once the study is complete.

3. **Environmental, landscape and biodiversity update**

- EH in AD's absence advised the group that ongoing Level 3 bench preparation/soiling (to be seeded with temporary wildflower mix) as will be long-term temporary, prior to final flooding.
- EH said preparations for soil movements were underway (tip trimming and reptile mitigation).
- EH advised that a Dormouse licence has been submitted to Natural England as part of the process to round out/discharge the planning conditions for the 6 million tonnes extension approved earlier this year. This will allow a best practice approach for dormouse mitigation that will be over and above what was required under the quarry's previous conditions. Steps to include thinning and underplanting old M5 screen bank plantation, scrub planting in unused corners between new perimeter track and final mudstone face position, hedge planting between track and final faces.
- EH said monitoring was ongoing of the 2022 artificial badger sett, which was still not being used by badgers.
- EH said work to carry out the next phase of hedge cutting/laying on Itchington Rd hedge was ongoing. A revised quote has been received for only the south-western (more recent) section ½ and the team is now awaiting PO approval from senior management before proceeding. The revised approach will not now require any road closures – simply the use of long-reach hedge flail and manual hedge laying agricultural equipment. The work will be carried out within sufficiently wide verge to provide coned-off safe working.

- CB said when you are scrub laying, would you consider Bullaces instead of Blackthorne.
- SS said she would ask AD for consideration.

4. **Land and mineral planning update**

- TM said the company had planning consent for area 1 and the key requirement now was to secure a Dormouse licence and address other outstanding planning conditions. He said we are keen to get on and are working through the planning conditions, but we will keep you updated on when we'll be making a start.



- TM said beyond the green area, the company is continuing to liaise with SGC on the development of its local plan, expected to be finalised late 2026, and we are carrying out initial onsite surveys to support these discussions.
- TM said future extension proposals will be subject to a planning application which will be supported by an Environment Impact Assessment (EIA). The process will also include pre-application consultation as well as SGC's own public consultation on our future proposals.
- TM said in regard to his action for a time-line, this was subject to SGC's plan etc but as a broad guideline the different quarry areas would provide the following:
 - Area 1 = 3 years supply of material.
 - Area 2 = 10 years supply of material.
 - Area 3 = 25-30 years of material.
- KS said so I can get this straight, I understand it that you are working with SGC on the local plan and in addition are having to develop numerous reports, ecological etc. You have identified mineral in the red area on the map, which is your preferred area to extract, but it's subject to talks with SGC about its local plan, which is expected to be finalised by late 2026, and it's a part of the government's strategic plan for housing, the stone comes from here.

- CB said would you consider adopting the path as a project “Limestone Walk Pathway” (Jubilee Way).
- TM said it’s something that could be considered; we did something similar at Whatley quarry. He said in the past we have had discussions with LS but the area maps look like a spiders web of public rights of way.

5. AOB

- KS said Itchington Road has a 30mph speed limit and the residents have raised concerns about speeding and would like to put in an application to reduce the speed to 20mph. Would the quarry be able to support us in our application.
- TM said the company did support the same at Chipping Sodbury quarry.
- SS said Chipping Sodbury were in a similar position to KS.
- TM said as a part of our assessment, we’ve noticed Itchington Road is used when the M5 is busy.
- HJ said is it possible to get some boulders to go along the green by the shop.
- EH said yes, can you let me know the size.

Contact details.

Email: tytheringtonquarryenquiries@uk.heidelbergmaterials.com or call us on our freephone number 0800 160 1321

Tytherington Community Web page is
www.communities.heidelbergmaterials.co.uk/en/sites/tytherington-quarry

Heidelberg Careers
www.careers.heidelbergmaterials.co.uk/en

Summary of Actions

1. KS to chase residents for response to defib training.
2. SS to check with AD re trees and liaise with HJ’s office.
3. TM to provide initial dust monitoring data from the Slad and the new data at next meeting.
4. SS to speak with AD about laying Bullaces instead of Hawthorn.
5. TM to look at adopting Jubilee Way as a project for “Limestone Walk Pathway”.
6. HJ to let EH know the size of the boulders required for the green by the shop.

Proposed dates for next meeting

Thursday 22nd January 2026 17:30

Thursday 30th April 2026 17:30

Thursday 30 July 2026 17:30

[ENDS]